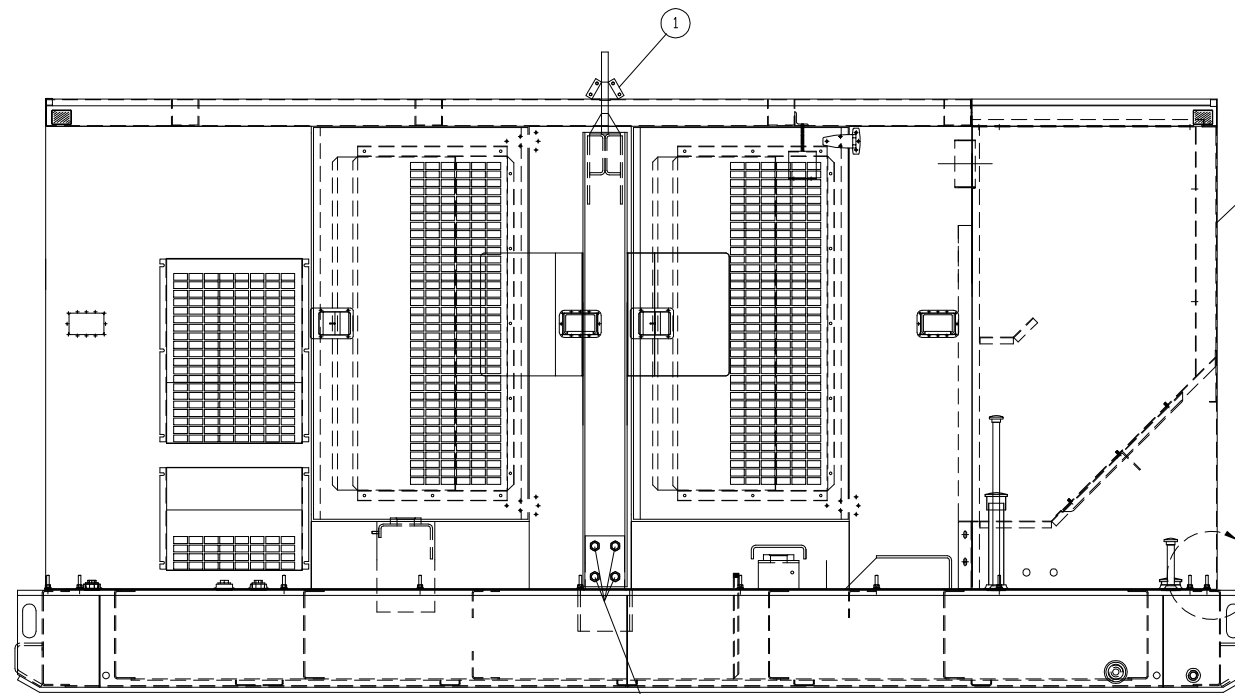
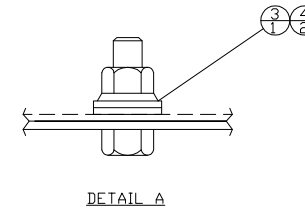
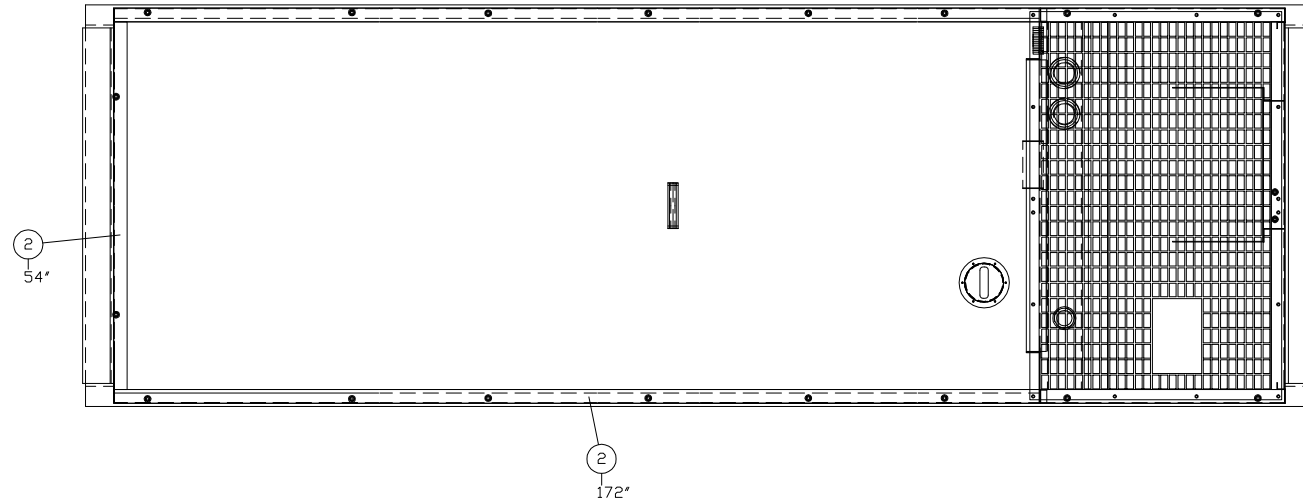


INCH 53A220-1

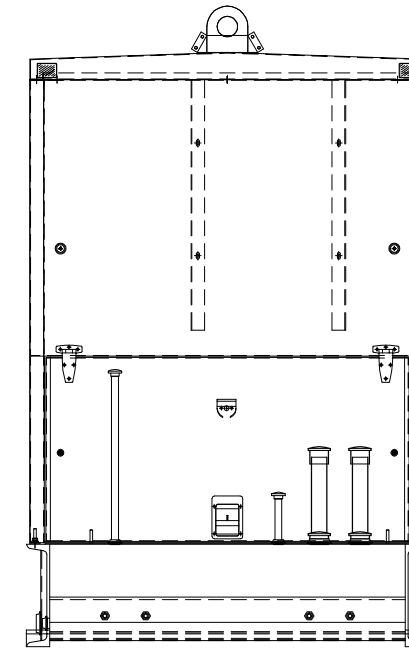
ITEM	QTY.	PART NO.	DESCRIPTION	WEIGHT
1	1	51C113	RAIN SKIRT	1
2	456	8694K74	3/16"x2" GASKETING	1
3	20	198-2970	3/8"-16NC WHIZLOCK NUT	1
4	40	BT-5360	7/16" FLAT WASHER	-
TOTAL				3



REF. 53A214 STD DUAL VOLTAGE ENCL. GP.
 53A216 CSA SINGLE VOLTAGE ENCL. GP.
 53A215 CSA DUAL VOLTAGE ENCL. GP.

REF. 53A218
 BASE MTG GP.

TORQUE LIFT ARCH MOUNTING BOLTS TO 265 +/- 35 Lbs/Ft



EXPORT UPDATE		CHANGE NOTICE		TITLE	
06/20/13	BML	1	NO	XQ230/300 APS230/300 ENCLOSURE MOUNTING GROUP	
DATE	BY	NO.		DRAWING NUMBER	
				53A220-1	

ALTORFER			
ALTORFER POWER SYSTEMS 6315 W. FAUBER RD. PHONE (309) 697-1234 BARTONVILLE, IL 61607 FAX (309) 282-7546			
THIS DOCUMENT CONTAINS PROPRIETARY INFORMATION OF ALTORFER, INC. WITHOUT THE WRITTEN PERMISSION OF ALTORFER, INC., ANY COPYING OR OTHER USE EXCEPT THAT FOR WHICH IT WAS INTENDED IS PROHIBITED.			
ALL DIMENSIONS IN INCHES UNLESS OTHERWISE SPECIFIED	FILE	PROJECT REFERENCE	
TOLERANCES: X.X ± 0.100 X.XX ± 0.060 X.XXX ± 0.005	DF/53A	XQ230/300 APS230/300 RENTAL PACKAGE	
THIRD ANGLE PROJECTION	SCALE/SHEET SIZE	DRAWN BY	QUOTE NUMBER
ANGULAR ± 1'	1=20/C	BML	-
	SHEET	DATE	WORK ORDER NUMBER
	1 OF 1	07-28-08	-
TITLE			DRAWING NUMBER
XQ230/300 APS230/300 ENCLOSURE MOUNTING GROUP			53A220-1