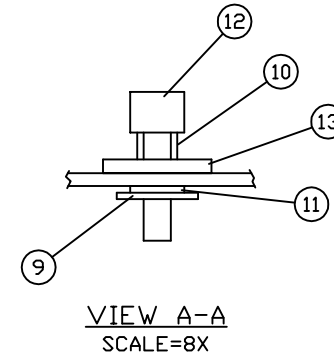
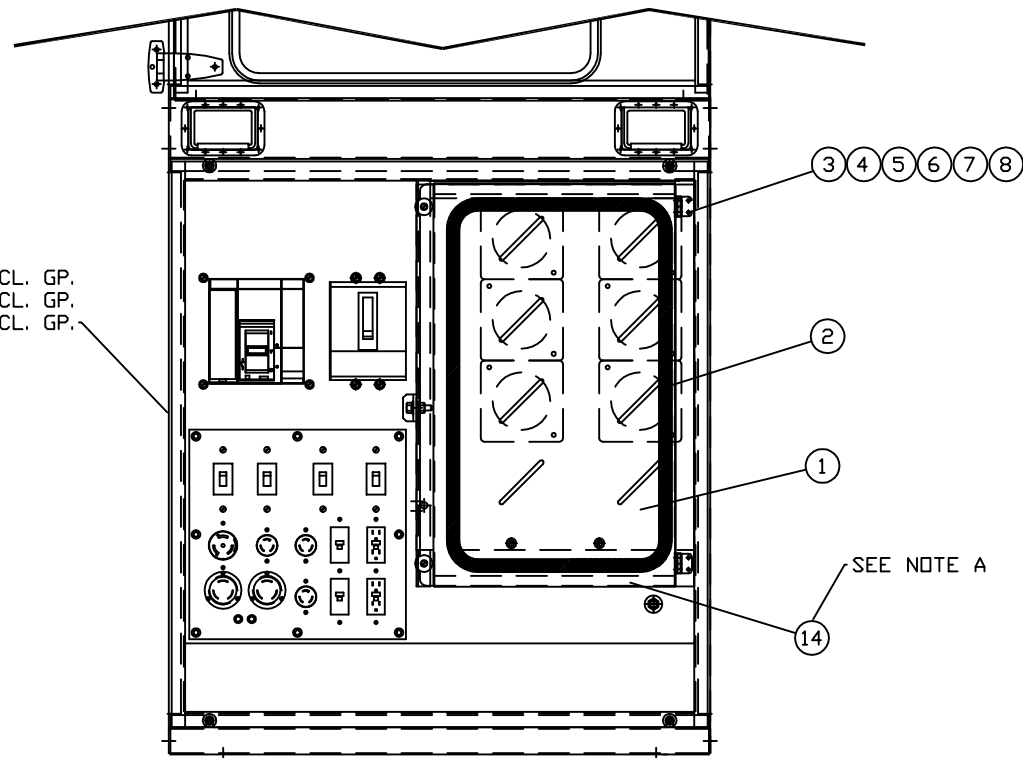


INCH 53A217-1

ITEM	QTY.	PART NO.	DESCRIPTION	WEIGHT
1	1	52C177	LOAD COVER WINDOW	4
2	1	75000692	WINDOW GROMMET- 70" Lg.	1
3	8	527	#10 LOCK WASHER	1
4	8	1210	#10-24 NUT	-
5	8	511	#10 FLAT WASHER	-
6	8	72158	#10-24x.75 TAPERED HEAD SCREW	-
7	2	SSHINGE	HINGE	1
8	4	54D148	HINGE - LOAD GASKET	-
9	2	90102A030	SPLIT RETAINING PIN	-
10	2	9435K5	SPRING	-
11	2	95630A445	TEFLON FLAT WASHER	-
12	2	91035A625	THUMB SCREW	-
13	2	272385-1	1/4" NEOPREME BACKED FLAT WASHER	-
14	1	52C160-2	LOAD COVER DOOR ASSEMBLY	20
TOTAL				27

REF. 53A214 DUAL VOLTAGE STD ENCL. GP.  
 53A215 DUAL VOLTAGE CSA ENCL. GP.  
 53A216 SINGLE VOLTAGE CSA ENCL. GP.



NOTE A: 52C160-2 - LOAD COVER DOOR ASS. RECIEVED  
 IN 53C200 - ENCLOSURE PARTS GP.

01/15/16 D. ROLING	DATE BY	<b>ALTORFER</b>		<b>ALTORFER POWER SYSTEMS</b>		
		6315 W. FAUBER RD. BARTONVILLE, IL 61607		PHONE (309) 697-1234 FAX (309) 282-7546		
THIS DOCUMENT CONTAINS PROPRIETARY INFORMATION OF ALTORFER, INC. WITHOUT THE WRITTEN PERMISSION OF ALTORFER, INC., ANY COPYING OR OTHER USE EXCEPT THAT FOR WHICH IT WAS INTENDED IS PROHIBITED						
1 UPDATE ITEM#6 PART NUMBER	CHANGE NOTICE	ALL DIMENSIONS IN INCHES UNLESS OTHERWISE SPECIFIED		FILE DF/53A	PROJECT REFERENCE XQ230 RENTAL PACKAGE	
		TOLERANCES: X.X ± 0.100 X.XX ± 0.060 X.XXX ± 0.005	THIRD ANGLE PROJECTION	SCALE/SHEET SIZE 1=10/C	DRAWN BY B. LOHNES	QUOTE NUMBER -
		ANGULAR ± 1°		SHEET 1 OF 1	DATE 06-27-08	WORK ORDER NUMBER -
		TITLE XQ230 LOAD DOOR MOUNTING GROUP				DRAWING NUMBER 53A217-1
2	NO.				1	