

ABBREVIATIONS

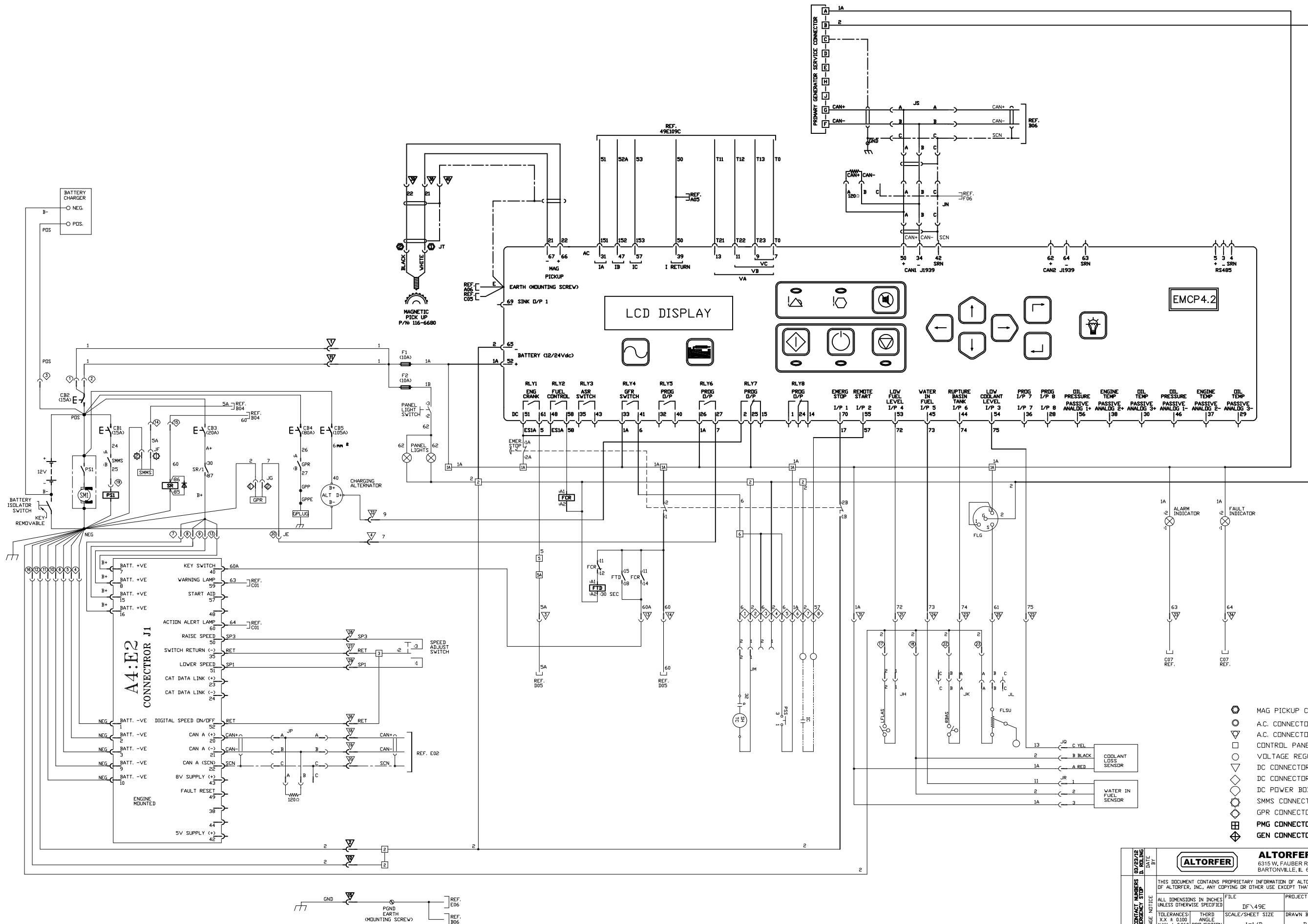
ALS	ALARM SILENCE PUSH BUTTON
ALT	ALTERNATOR
AWG	AMERICAN WIRE GAUGE
CB	CIRCUIT BREAKER
CT	CURRENT TRANSFORMER
D	DIODE
ESPB	EMERGENCY STOP PUSH BUTTON
F	FUSE
FLG	FUEL LEVEL GAUGE
FLSU	FUEL LEVEL SENDING UNIT
GPP	GLOW PLUG POST
GPR	GLOW PLUG RELAY
IC	REMOTE START/STOP INITIATE CONTACT
LFLAS	LOW FUEL LEVEL ALARM SWITCH
NC	NORMALLY CLOSED
NO	NORMALLY OPEN
PL	PANEL ILLUMINATION LIGHT
PLS	PANEL LIGHT SWITCH
PS	PINION SOLENOID
PSS	PERSONNEL SAFETY SWITCH
SEC	SECOND
SHTC	CIRCUIT BREAKER SHUNT TRIP COIL
SM	STARTING MOTOR
SMMS	STARTING MOTOR MAGNETIC SWITCH
T	GENERATOR LINE LEADS

SYMBOLS

	A.C. CONNECTOR (JC)		EMERGENCY STOP
	A.C. CONNECTOR (JD)		RAISE
	CONTROL PANEL TERMINAL POINT (TS1)		LOWER
	VOLTAGE REGULATOR TERMINAL POINT		ON
	DC CONNECTOR #1 (JA)	○	OFF
	DC CONNECTOR #2 (JB)	⊗	LAMP
	DC POWER BOX CONNECTOR (JE)		PANEL ILLUMINATION LIGHT
	SMMS CONNECTOR (JF)		
	GPR CONNECTOR (JG)		
	PMG CONNECTOR (JR)		
	GEN CONNECTOR (JS)		
	STANDARD WIRING		
	CUSTOMER WIRING		
	LOAD PAN WIRING		
	SHIELDED WIRE		
	RELAY CONTACT (NORMALLY OPEN)		
	RELAY CONTACT (NORMALLY CLOSED)		
	GENERATOR FRAME (CHASSIS) GROUND		
	EARTH GROUND		
	LIQUID LEVEL SWITCH		
	LEVEL SENDING UNIT		
	MANUALLY OPERATED CONTROL		
	OPERATED BY TURNING		
	DIODE		
	FUSE		
	EMERGENCY SWITCH		
	RELAY COIL		
	CIRCUIT BREAKER		
	CAPACITOR		

ABBREVIATIONS AND SYMBOLS

03/23/12 DROLING BY	ALTORFER		ALTORFER POWER SYSTEMS	
	6315 W. FAUBER RD. BARTONVILLE, IL 61607		PHONE (309) 697-1234 FAX (309) 202-7546	
CORRECT CONTACT NUMBERS FOR EMERGENCY STOP CHANGE NOTICE	ALL DIMENSIONS IN INCHES UNLESS OTHERWISE SPECIFIED		FILE	PROJECT REFERENCE
	TOLERANCES XX ± 0.100 X.XX ± 0.060 X.XXX ± 0.020	THIRD ANGLE PROJECTION	SCALE/SHEET SIZE DF / 49E 1=1/D	AP5150 2012
1	TITLE	SHEET	DATE	QUOTE NUMBER
2	DIAGRAM - WIRING EMCP 4.2	1 OF 3	11/10/2011	WORK ORDER NUMBER
NO				DRAWING NUMBER 49E109A-01



- MAG PICKUP CONNECTOR (JT)
- A.C. CONNECTOR (JC)
- A.C. CONNECTOR (JD)
- CONTROL PANEL TERMINAL POINT (TS1)
- VOLTAGE REGULATOR TERMINAL POINT
- DC CONNECTOR #1 (JA)
- DC CONNECTOR #2 (JB)
- DC POWER BOX CONNECTOR (JE)
- SMMS CONNECTOR (JF)
- GPR CONNECTOR (JG)
- PMG CONNECTOR (JR)
- GEN CONNECTOR (JS)

02/22/12 CORRECT CONTRACT NUMBERS & D. ROLLING FOR EMERGENCY STOP CHANGE NOTICE 1 2	ALTORFER ALTORFER POWER SYSTEMS 6315 W. FAUBER RD. BARTONVILLE, IL 61607 PHONE (309) 697-1234 FAX (309) 262-7546		
	THIS DOCUMENT CONTAINS PROPRIETARY INFORMATION OF ALTORFER, INC. WITHOUT THE WRITTEN PERMISSION OF ALTORFER, INC. ANY COPYING OR OTHER USE EXCEPT THAT FOR WHICH IT WAS INTENDED IS PROHIBITED.	FILE DF\49E	PROJECT REFERENCE APS150 2012
	ALL DIMENSIONS IN INCHES (UNLESS OTHERWISE SPECIFIED) TOLERANCES: XX ± 0.100 ANGLE XXX ± 0.060 PROJECTION XXXX ± 0.005 ANGULAR ± 1'	SCALE/SHEET SIZE 1=1/D	DRAWN BY D. ROLLING
	SHEET 2 DF 3	DATE 11/10/2011	WORK ORDER NUMBER DRAWING NUMBER 49E109B-01

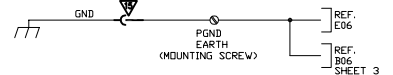
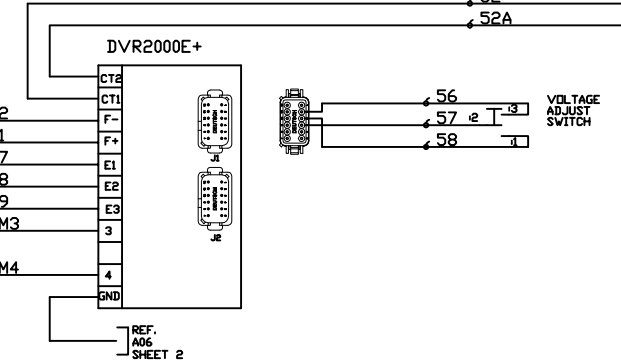
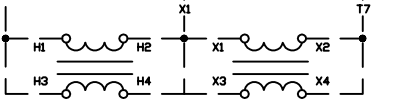
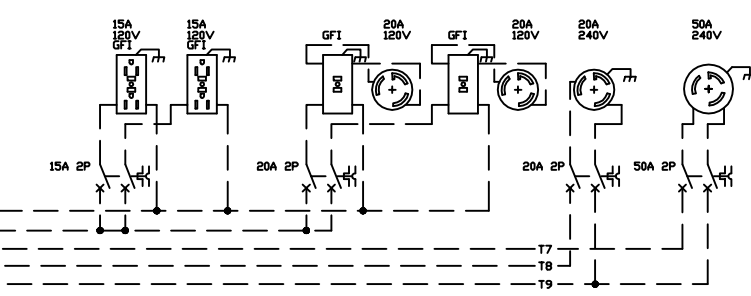
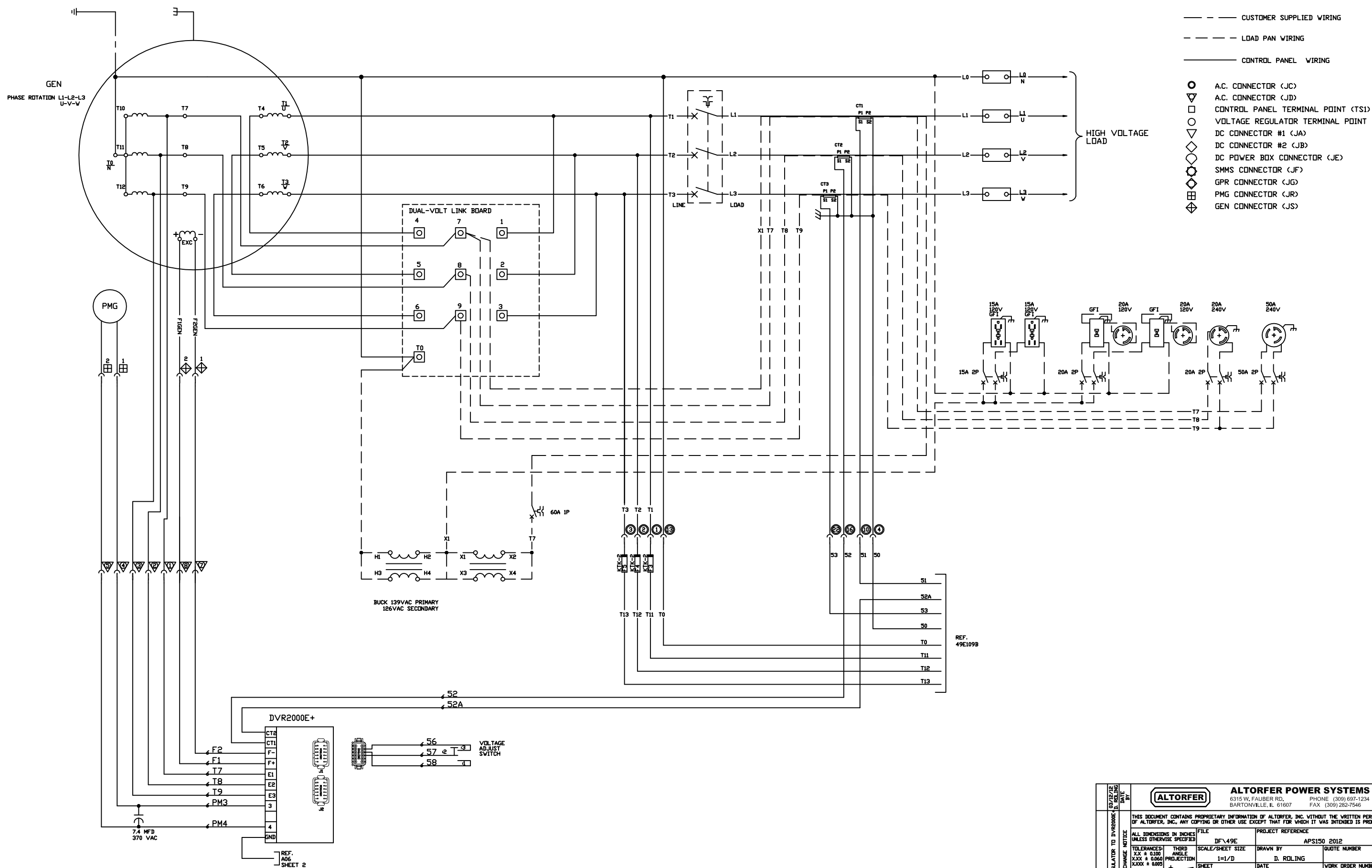


DIAGRAM - WIRING EMCP 4.2



REF. 49E109B

REF. A06 SHEET 2

<p>8/2/12 D. ROLING NY, NY</p>		<p>ALTORFER ALTORFER POWER SYSTEMS 6315 W. FAUBER RD. PHONE (309) 697-1234 BARTONVILLE, IL 61607 FAX (309) 262-7546</p>	
<p>THIS DOCUMENT CONTAINS PROPRIETARY INFORMATION OF ALTORFER, INC. WITHOUT THE WRITTEN PERMISSION OF ALTORFER, INC., ANY COPYING OR OTHER USE EXCEPT THAT FOR WHICH IT WAS INTENDED IS PROHIBITED.</p>		<p>FILE: DF\49E PROJECT REFERENCE: APS150 2012</p>	
<p>ALL DIMENSIONS IN INCHES UNLESS OTHERWISE SPECIFIED</p>		<p>SCALE/SHEET SIZE: 1=1/D DRAWN BY: D. ROLING QUOTE NUMBER:</p>	
<p>TOLERANCES: XX ± 0.100 ANGLE XXX ± 0.060 PROJECTION XXX ± 0.005 SHEET</p>		<p>DATE: 11/10/2011 WORK ORDER NUMBER:</p>	
<p>ANGULAR ± 1'</p>		<p>TITLE: DRAWING NUMBER: 49E109C-01</p>	
<p>DIAGRAM - WIRING EMCP 4.2</p>			