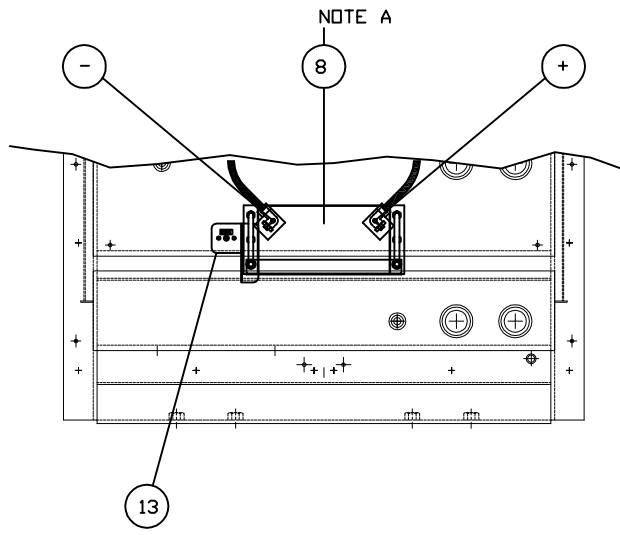
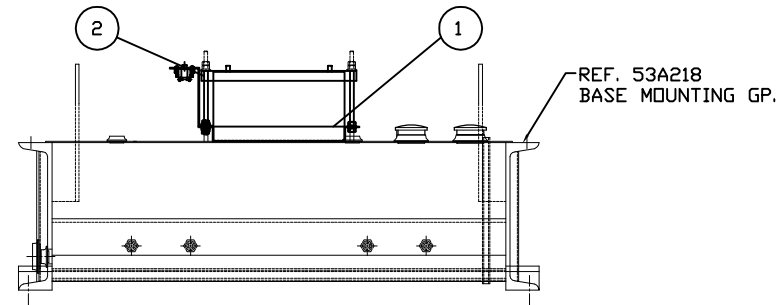


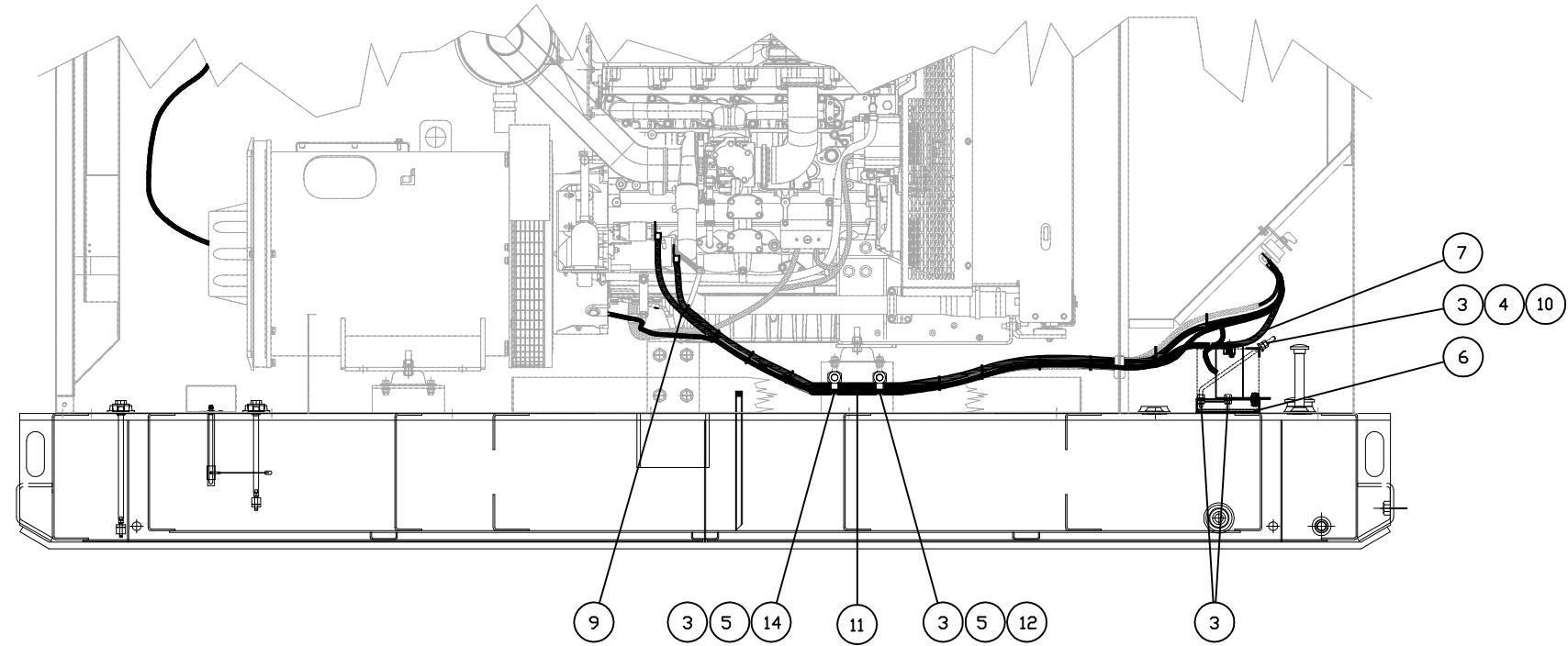
ITEM	QTY.	CAT PART No.	MFG. PART No.	DESCRIPTION	WEIGHT
1	1		49C155	BATTERY BASE	4
2	1		49C156	BATTERY TIE DOWN	1
3	13	198-2970		3/8"-16NC WHIZ LOCK NUT	-
4	2	8T-4896		3/8" WASHER - FLAT	-
5	2	4S-4455		VINYL CLAMP - 1-1/2"	-
6	1		BB12	BATTERY BOARD 6' X 12'	1
7	1		49E313	CABLE GROUP - STARTING BATTERIES	50
8	1	115-2421		12V BATTERY	40
9	10	3S-2093		WHITE CABLE TIE	-
10	2		HRACKROD	3/8"-16NNC THREADED ROD - 14' LONG	1
11	1	5N-8359		1' WIRE LOOM 12' LONG	-
12	2	345-8531		3/8"-16NC X 1' WHIZ LOCK BOLT	-
13	1	49E322		BATTERY CHARGER CIRCUIT BREAKER ASSEMBLY	6
TOTAL					103



TOP VIEW



FRONT VIEW



SIDE VIEW

FINISH	
MATERIAL	
NOTE	1E0507 IDENT
	1E0011 INTPR & TOL
	MANUFACTURING SPECIFICATIONS

		ALTORFER POWER SYSTEMS 6315 W. FAUBER RD. PHONE (309) 697-1234 BARTONVILLE, IL 61607 FAX (309) 282-7546		
		THIS DOCUMENT CONTAINS PROPRIETARY INFORMATION OF ALTORFER, INC. WITHOUT THE WRITTEN PERMISSION OF ALTORFER, INC., ANY COPYING OR OTHER USE EXCEPT THAT FOR WHICH IT WAS INTENDED IS PROHIBITED.		
CHANGE NOTICE 1	ALL DIMENSIONS IN INCHES UNLESS OTHERWISE SPECIFIED	FILE DF/49A	PROJECT REFERENCE APS150A REFURB RENTAL UNIT	
	TOLERANCES: XX ± 0.100 XXX ± 0.060 XXXX ± 0.005	THIRD ANGLE PROJECTION	SCALE/SHEET SIZE 1=10/D	DRAWN BY D. ROLING
	ANGULAR ± 1°		SHEET 1 OF 1	DATE 11/07/2016
TITLE APS150A REFURB STARTING BATTERY GROUP			DRAWING NUMBER 49A310	

NOTE A: CAT 1152421 BATTERY SUPPLIED BY CATERPILLAR QTY. 1