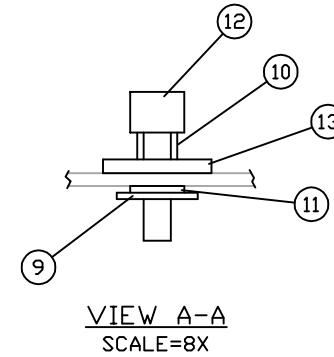
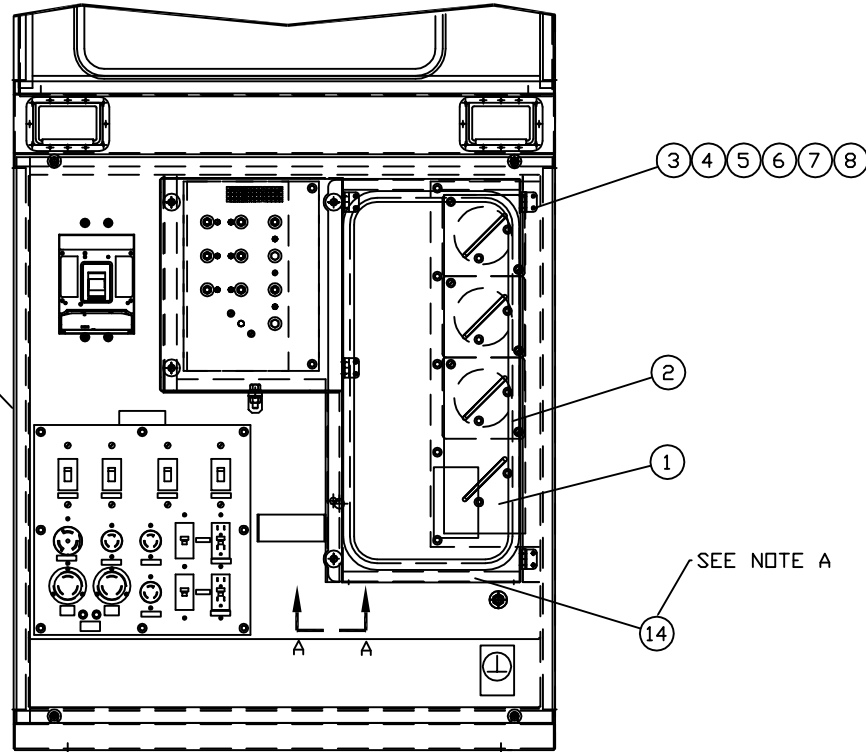


INCH 49A121-1

ITEM	QTY.	PART NO.	DESCRIPTION	WEIGHT
1	1	54C247	LOAD COVER WINDOW	4
2	1	AS990	WINDOW GROMMET- 70" Lg.	1
3	8	33614	#10 LOCK WASHER	1
4	12	36028	#10-24 NUT	-
5	8	33074	#10 FLAT WASHER	-
6	16	72158	#10-24x.75 TAPERED HEAD SCREW	-
7	2	SSHINGE	HINGE	1
8	8	54D148	HINGE - LOAD GASKET	-
9	2	90102A030	SPLIT RETAINING PIN	-
10	2	9435K5	SPRING	-
11	2	95630A445	TEFLON FLAT WASHER	-
12	2	91035A625	THUMB SCREW	-
13	2	317-5700	1/4" NEOPREME BACKED FLAT WASHER	-
14	1	53C307-01	LOAD COVER DOOR ASSEMBLY	20
TOTAL				27

REF. 49A113 DUAL VOLTAGE ENCL. GP.



NOTE A: 53C307-01 - LOAD COVER DOOR ASS. RECIEVED
IN 49C100 - ENCLOSURE PARTS GROUP

12-19-12 BML	DATE BY	ALTORFER POWER SYSTEMS				
		6315 W. FAUBER RD. BARTONVILLE, IL 61607		PHONE (309) 697-1234 FAX (309) 282-7546		
UPDATED HARDWARE #4,6,8	CHANGE NOTICE	THIS DOCUMENT CONTAINS PROPRIETARY INFORMATION OF ALTORFER, INC. WITHOUT THE WRITTEN PERMISSION OF ALTORFER, INC., ANY COPYING OR OTHER USE EXCEPT THAT FOR WHICH IT WAS INTENDED IS PROHIBITED				
		ALL DIMENSIONS IN INCHES UNLESS OTHERWISE SPECIFIED	FILE DF/49A	PROJECT REFERENCE APS150 RENTAL PACKAGE		
		TOLERANCES: X.X ± 0.100 X.XX ± 0.060 X.XXX ± 0.005	THIRD ANGLE PROJECTION	SCALE/SHEET SIZE 1=10/C	DRAWN BY B. LOHNES	QUOTE NUMBER -
		ANGULAR ± 1°		SHEET 1 OF 1	DATE 01-15-09	WORK ORDER NUMBER -
2	1	NO.	APS150 LOAD DOOR MOUNTING GROUP		DRAWING NUMBER 49A121-1	