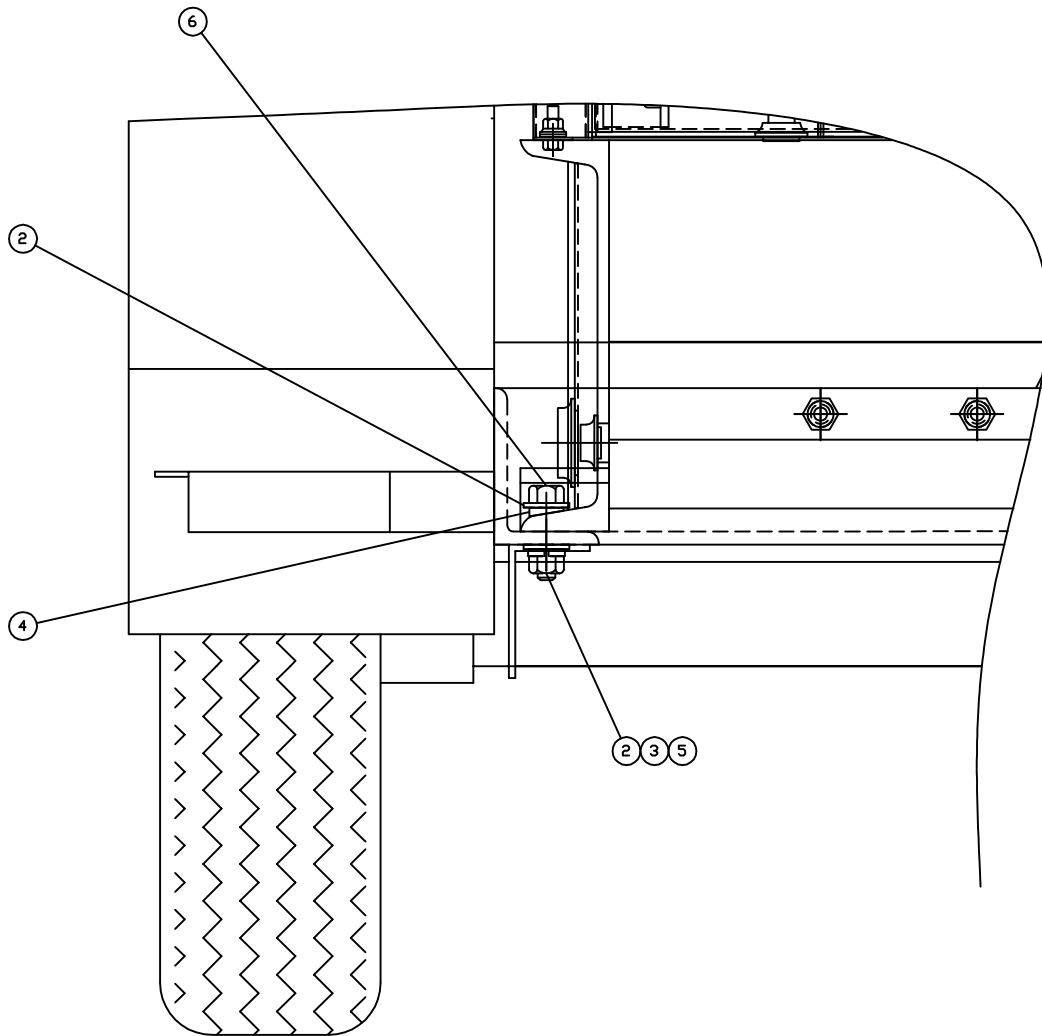
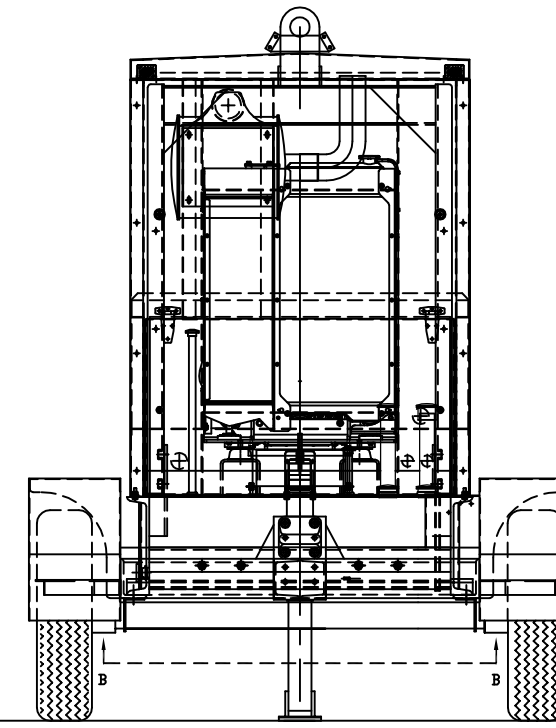
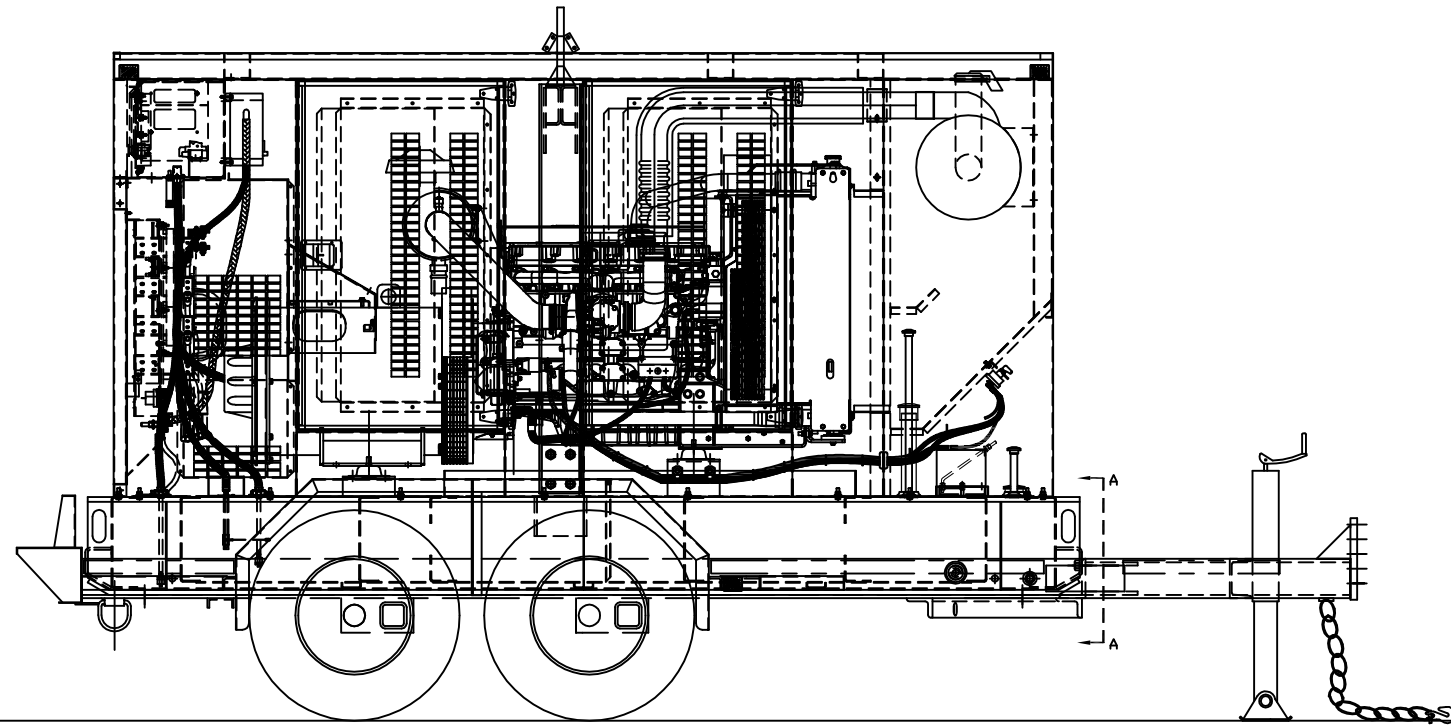
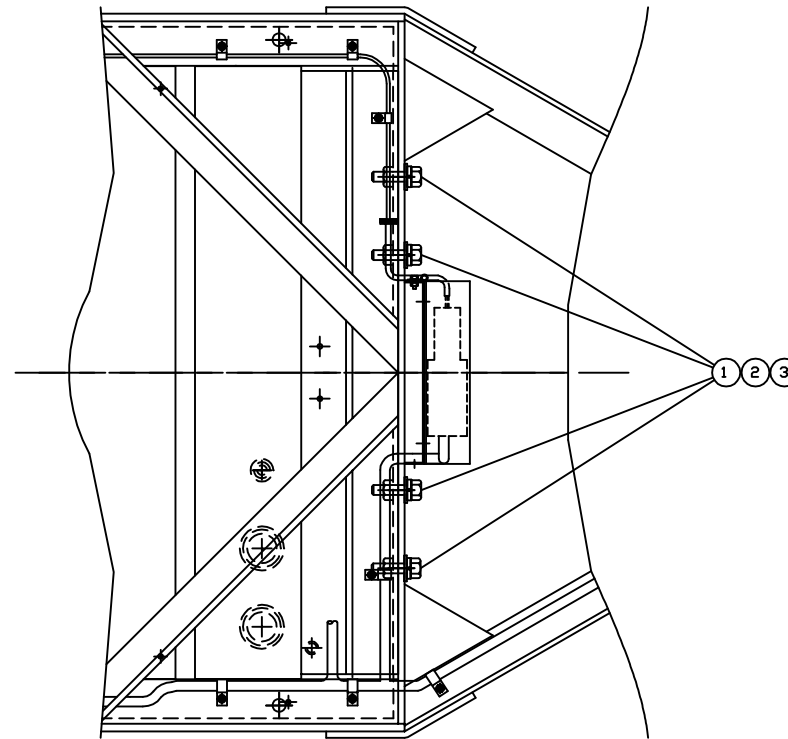


ITEM	QTY.	DESCRIPTION
1	4	1A-8063 - 3/4"-10NCx2.50" BOLT
2	16	8T-4994 - 3/4" FLAT WASHER
3	8	3B-4512 - 3/4" LOCK WASHER
4	4	33336 - 3/4" BEVEL WASHER
5	4	6V-8182 - 3/4"-10NC NUT
6	4	9X-8887 - 3/4"-10NCx3.00" BOLT



VIEW A-A
SCALE = 4X
TYP. 4 PLACES



VIEW B-B (BOTTOM)
SCALE = 2X

NOTE: THREAD THE ENCLOSURE CLEARANCE LIGHT HARNESS ON THE TRAILER THRU THE FUEL BASE RECEWAY TUBE NEXT TO THE BATTERY GROUP. THEN CONNECT TO THE ENCLOSURE CLEARANCE LIGHT HARNESS COMING DOWN THRU THE EXHAUST DUCT ASSEMBLY.

<p>ALTORFER</p> <p>6315 W. FAUBER RD. BARTONVILLE, IL 61607</p> <p>PHONE (309) 697-1234 FAX (309) 282-7546</p>		<p>ALTORFER POWER SYSTEMS</p>		
		<p>THIS DOCUMENT CONTAINS PROPRIETARY INFORMATION OF ALTORFER, INC. WITHOUT THE WRITTEN PERMISSION OF ALTORFER, INC., ANY COPYING OR OTHER USE EXCEPT THAT FOR WHICH IT WAS INTENDED IS PROHIBITED</p>		
<p>CHANGE NOTICE</p>	<p>ALL DIMENSIONS IN INCHES UNLESS OTHERWISE SPECIFIED</p>	<p>FILE</p> <p>DF/49A</p>	<p>PROJECT REFERENCE</p> <p>APS150 RENTAL PACKAGE</p>	
	<p>TOLERANCES:</p> <p>XX ± 0.100</p> <p>X.XX ± 0.060</p> <p>X.XXX ± 0.005</p>	<p>THIRD ANGLE PROJECTION</p>	<p>SCALE/SHEET SIZE</p> <p>1=15/D</p>	<p>DRAWN BY</p> <p>B. LOHNES</p>
	<p>ANGULAR ± 1°</p>	<p>1 OF 1</p>	<p>DATE</p> <p>02-10-09</p>	<p>QUOTE NUMBER</p> <p>WORK ORDER NUMBER</p>
	<p>TITLE</p> <p>APS150 TRAILER MOUNTING GROUP</p>			<p>DRAWING NUMBER</p> <p>49A118</p>