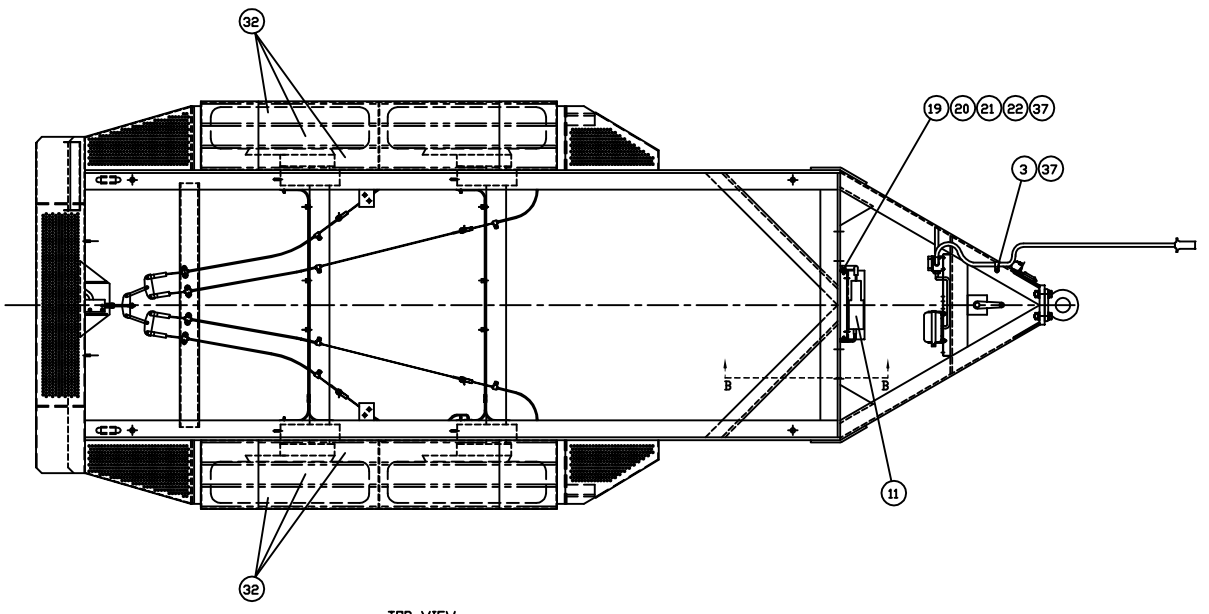
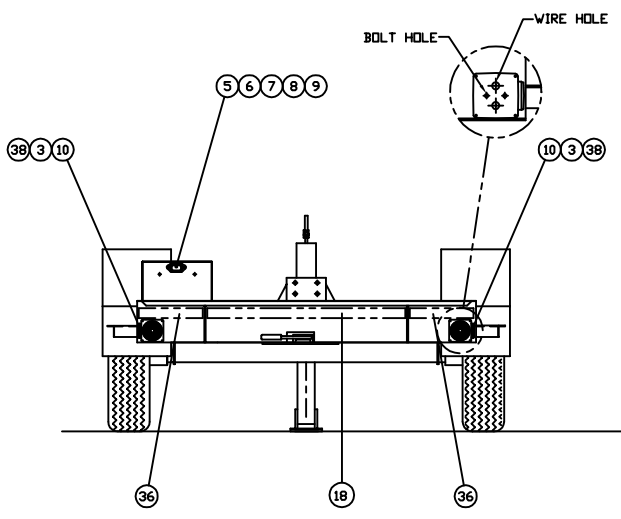


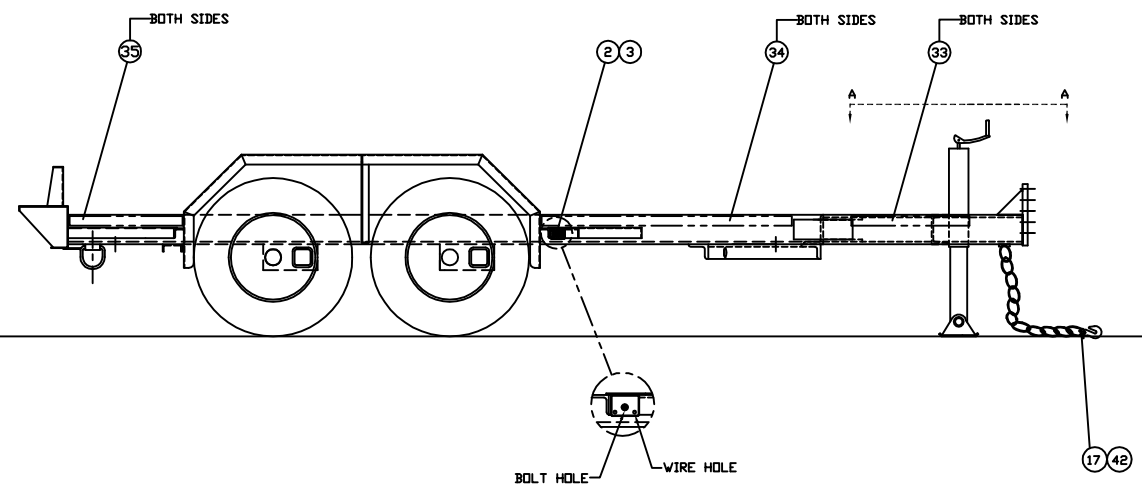
VIEW A-A  
SCALE=2X



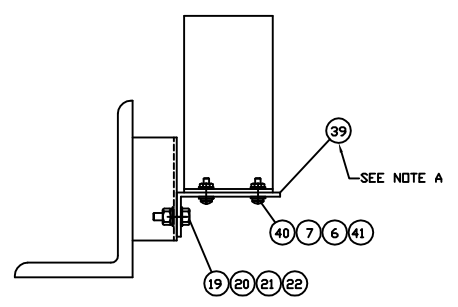
TOP VIEW



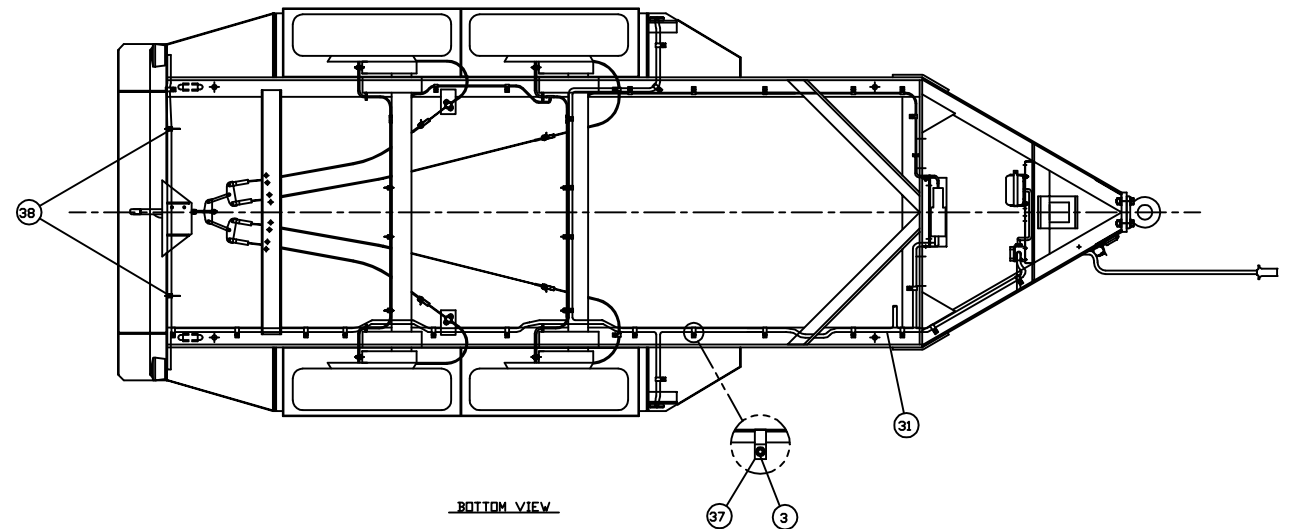
REAR VIEW



FRONT VIEW



VIEW B-B  
SCALE=6X



BOTTOM VIEW

ITEM	QTY.	DESCRIPTION
1	1	49F100 - APS150 TRAILER ASSEMBLY
2	2	T114A - AMBER MARKER LIGHT
3	31	0129150 - 1/4-20NC WHIZLOCK NUT
4	1	2024 - BATTERY RECHARGER
5	2	90072 - #10-32NCx0.75 BOLT
6	6	527 - #10 LOCK WASHER
7	12	511 - #10 FLAT WASHER
8	2	1211 - #10-32NC NUT
9	1	436LPL - LICENSE PLATE LIGHT
10	2	T440 - TAIL LIGHT
11	1	HBA-10 - CARLISLE HYDRAULIC BRAKE ACTUATOR
12	4	90056 - #6-32NCx1 SCREW
13	4	522 - #6 FLAT WASHER
14	4	525 - #6 LOCK WASHER
15	4	1206 - #6-32NC NUT
16	1	R51A - LUNETTE EYE
17	2	38HDDK - SAFETY HOOK
18	1	31568 - DIAMOND GRADE CONSPICUITY TAPE - 41.25' Lg.
19	8	6502 - 1/4-20NCx1 BOLT
20	15	501 - 1/4" FLAT WASHER
21	7	528 - 1/4" LOCK WASHER
22	8	100 - 1/4-20NC NUT
23	4	8T9396 - 5/8-18NCx3 BOLT
24	8	8T4122 - 5/8" FLAT WASHER
25	4	384510 - 5/8" LOCK WASHER
26	4	7X0448 - 5/8-18NC NUT
27	1	20010 - ELECTRICAL BREAKAWAY KIT
28	1	52E225 - JUNCTION BOX WIRING ASSEMBLY
29	1	52E205 - BREAKAWAY HARNESS
30	1	52E204 - TONGUE HARNESS
31	1	52E203-1 - TRAILER HARNESS
32	6	SHURE-STEP - SURE STEP - 89.00' Lg.
33	2	31568 - DIAMOND GRADE CONSPICUITY TAPE - 24.00' Lg.
34	2	31568 - DIAMOND GRADE CONSPICUITY TAPE - 51.00' Lg.
35	2	31568 - DIAMOND GRADE CONSPICUITY TAPE - 22.75' Lg.
36	2	31568 - DIAMOND GRADE CONSPICUITY TAPE - 13.00' Lg.
37	24	17009 - 5/8" CLAMP
38	2	17005 - 3/8" CLAMP
39	1	54F121 - ACTUATOR BRACKET
40	4	51454 - SCREW MS 10-24 x 3/4
41	4	36028 - NUT MS 10-24
42	2	38HTC - SAFETY CHAIN (27 LINKS)

TOTAL WEIGHT 2,750 lbs

NOTE A: 54F121 - ACTUATOR BRACKET RECEIVED IN 49F100 - APS150 TRAILER ASSEMBLY  
 NOTE B: BREAKAWAY SWITCH (2010) RECEIVED IN BREAKAWAY KIT (HBA-EBA)  
 NOTE C: TORQUE LUNETTE EYE MTG. BOLTS TO 273 ± 37 LB/FT (370 ± 50 N·M)

DATE	BY	<b>ALTORFER</b>		<b>ALTORFER POWER SYSTEMS</b>	
		6315 W. FAUBER RD. BARTONVILLE, IL 61607		PHONE (309) 697-1234 FAX (309) 282-7546	
THIS DOCUMENT CONTAINS PROPRIETARY INFORMATION OF ALTORFER, INC. WITHOUT THE WRITTEN PERMISSION OF ALTORFER, INC. ANY COPYING OR OTHER USE EXCEPT THAT FOR WHICH IT WAS INTENDED IS PROHIBITED.					
ALL DIMENSIONS IN INCHES UNLESS OTHERWISE SPECIFIED		FILE	PROJECT REFERENCE		
TOLERANCES: XX ± 0.100 XXX ± 0.060 XXXX ± 0.005		DF/49A	SCALE/SHEET SIZE	DRAWN BY	QUOTE NUMBER
THIRD ANGLE PROJECTION		1=20/D	DATE	B. LOHNES	WORK ORDER NUMBER
ANGULAR ± 1'		SHEET	1 OF 1	02/10/09	DRAWING NUMBER
TITLE		APS150 TRAILER GROUP		49A117	