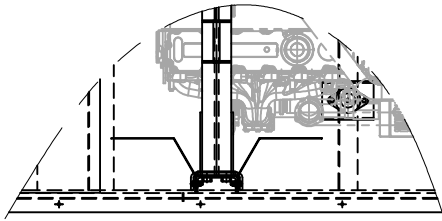
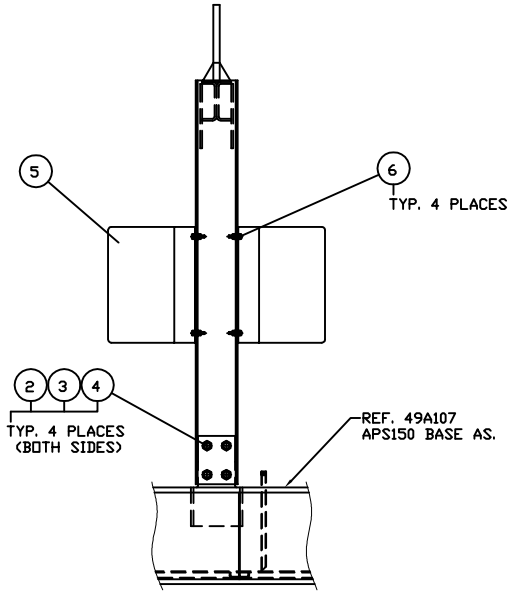


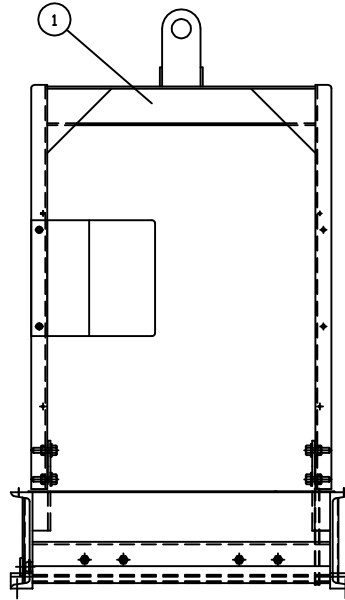
INCH 49A108-01



TOP VIEW



RIGHT SIDE VIEW



FRONT VIEW

ITEM	QTY.	PART NO.	DESCRIPTION	WEIGHT
1	1	49B120-01	LIFT ARCH ASSEMBLY	57
2	8	8T-4994	FLAT WASHER	-
3	8	1A-8063	BOLT	1
4	8	3B-4512	LOCK WASHER	-
5	2	49B122	HEAT SHIELD	20
6	4	345-8531	3/8" WHIZLOCK BOLT	-
TOTAL				78

12/21/12 DATE BY BLOHNES				ALTORFER POWER SYSTEMS 6315 W. FAUBER RD. PHONE (309) 697-1234 BARTONVILLE, IL 61607 FAX (309) 282-7546			
				THIS DOCUMENT CONTAINS PROPRIETARY INFORMATION OF ALTORFER, INC. WITHOUT THE WRITTEN PERMISSION OF ALTORFER, INC. ANY COPYING OR OTHER USE EXCEPT THAT FOR WHICH IT WAS INTENDED IS PROHIBITED.			
UPDATED DRAWING CHANGE NOTICE NO	1	ALL DIMENSIONS IN INCHES UNLESS OTHERWISE SPECIFIED	FILE DF/49A	PROJECT REFERENCE APS150 RENTAL PACKAGE			
		TOLERANCES: X.X ± 0.100 X.XX ± 0.060 X.XXX ± 0.005	THIRD ANGLE PROJECTION	SCALE/SHEET SIZE 1=20/B	DRAWN BY B. LOHNES	QUOTE NUMBER	
		ANGULAR ± 1°		SHEET 1 OF 1	DATE 11/13/08	WORK ORDER NUMBER	
		TITLE APS150 LIFT ARCH MOUNTING GROUP			DRAWING NUMBER 49A108-01		