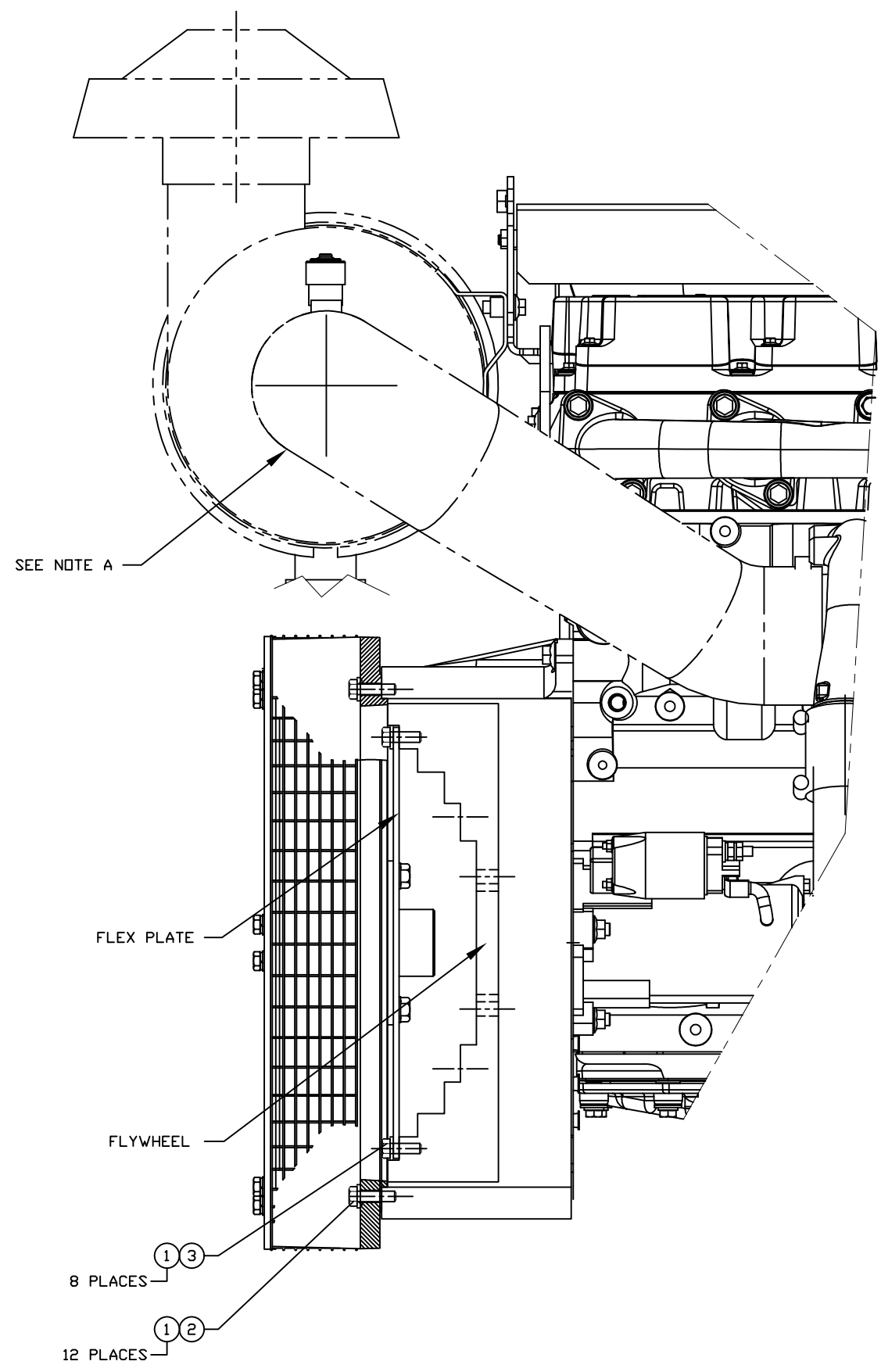


INCH 49A103

ITEM	QTY.	PART NO.	DESCRIPTION	WEIGHT
1	20	8T-4896	3/8" WASHER	-
2	12	8T-4195	BOLT M10 x 1.50	-
3	8	6F-7030	BOLT 3/8" x 24NC x 1" Lg	-



NOTE A: REMOVE AIR CLEANER AND HOSE TO INSTALL COUPLING GROUP

DATE BY				ALTORFER POWER SYSTEMS 6315 W. FAUBER RD. PHONE (309) 697-1234 BARTONVILLE, IL 61607 FAX (309) 282-7546		
				THIS DOCUMENT CONTAINS PROPRIETARY INFORMATION OF ALTORFER, INC. WITHOUT THE WRITTEN PERMISSION OF ALTORFER, INC., ANY COPYING OR OTHER USE EXCEPT THAT FOR WHICH IT WAS INTENDED IS PROHIBITED.		
CHANGE NOTICE	NO.	ALL DIMENSIONS IN INCHES UNLESS OTHERWISE SPECIFIED		FILE	PROJECT REFERENCE	
				DF/49A	APS150 RENTAL PACKAGE	
		TOLERANCES: X.X ± 0.100 X.XX ± 0.060 X.XXX ± 0.005	THIRD ANGLE PROJECTION	SCALE/SHEET SIZE	DRAWN BY	QUOTE NUMBER
		ANGULAR ± 1°		1=5/B	B. LOHNES	-
		SHEET	DATE	WORK ORDER NUMBER		
		1 OF 1	11-17-08	389911		
		TITLE			DRAWING NUMBER	
		APS150 GENERATOR COUPLING GROUP			49A103	