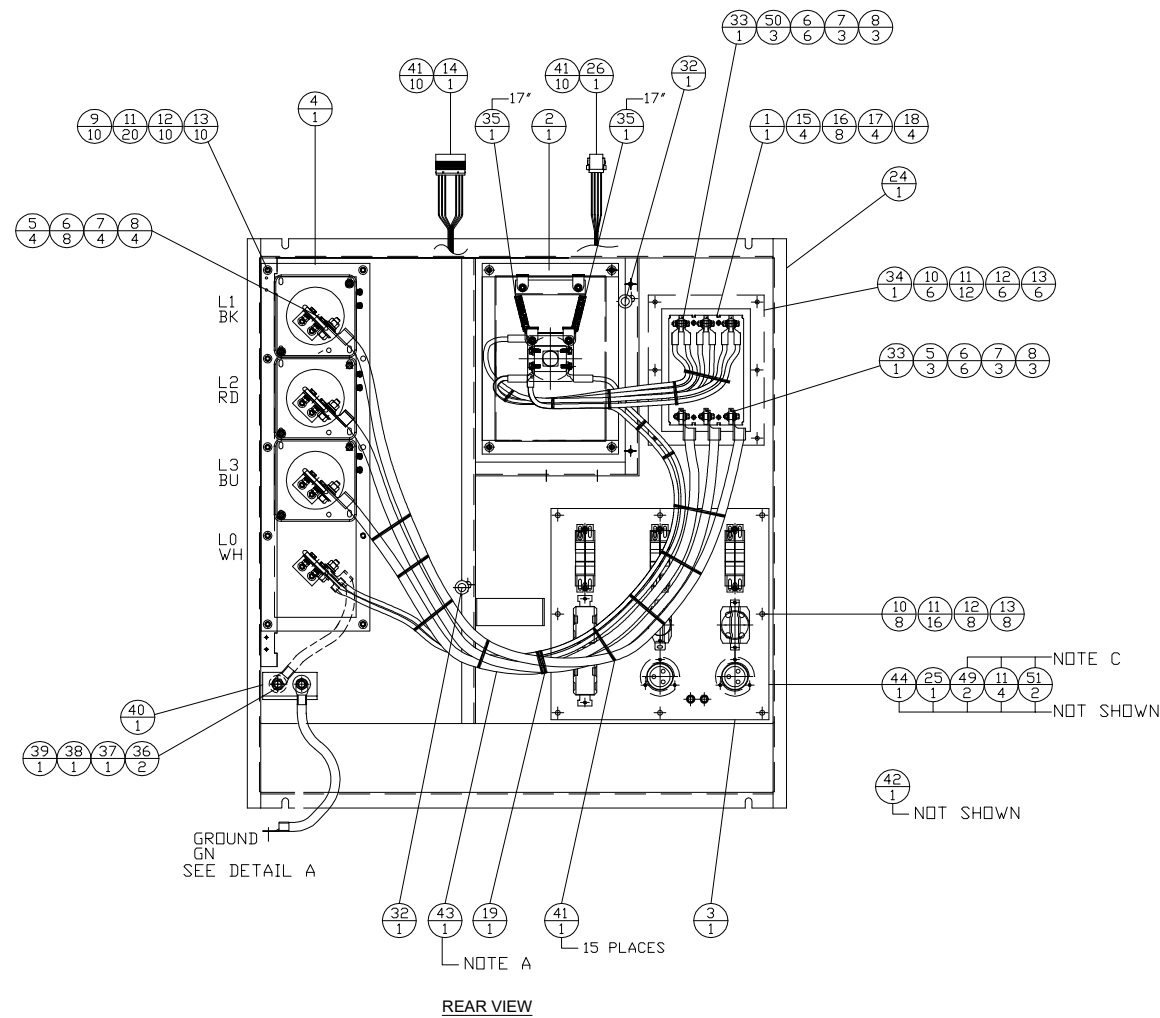
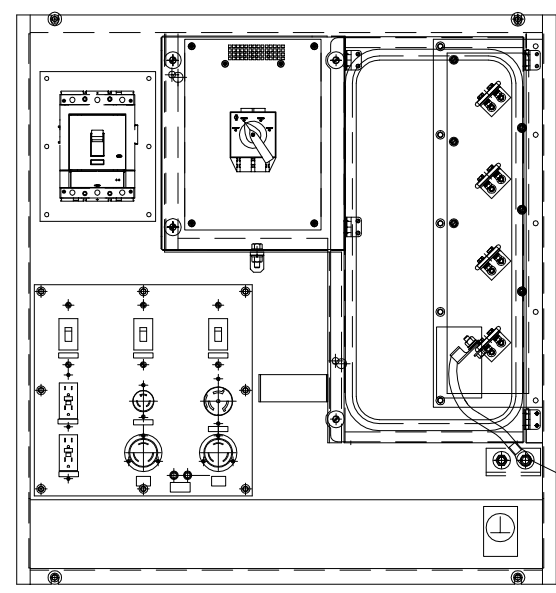


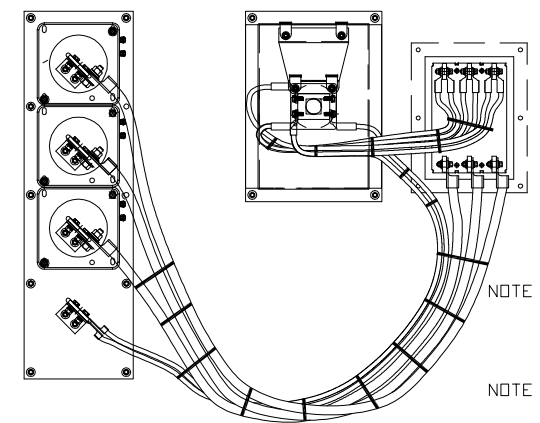
BASE/ENCLOSURE MOUNTING STUD SEE DETAIL A



REAR VIEW



FRONT VIEW

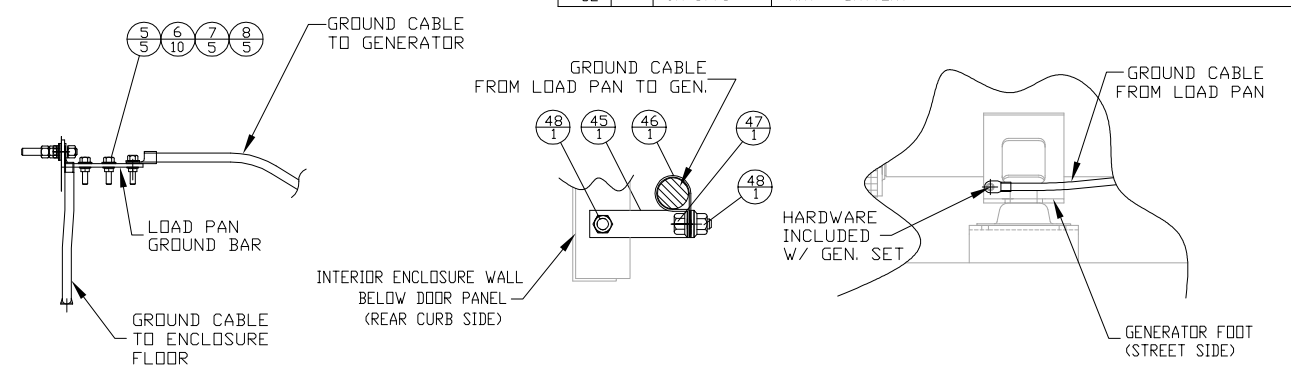


CABLE LAYOUT

NOTE A: ALL CABLE CONNECTIONS SHOWN IN LOAD PAN CONNECTION GROUP DRAWING (47E210)

NOTE B: ENCLOSURE AND GENERATOR CABLE CONNECTIONS MADE AFTER LOAD PAN IS INSTALLED INTO ENCLOSURE

NOTE C: FASTENS AC DISTRIBUTION HARNESS TO ENGINE AUX TERMINALS AFTER LOAD PAN IS INSTALLED INTO ENCLOSURE



DETAIL A SEE NOTE B

COMP	QTY	PART NO.	DESCRIPTION
1	1	T5NQ400BWS9	400 AMP 480V CIRCUIT BREAKER W/12V S.T.
2	1	47E201	ROTARY SWITCH ASSEMBLY
3	1	47A131	AC DISTRIBUTION CONNECTION GROUP
4	1	47E202	LOAD BOARD ASSEMBLY
5	13	9B-7237	3/8-16NC X 1.25" BOLT
6	32	5P-1075	3/8" FLAT WASHER
7	16	096-4415	3/8" LOCK WASHER
8	16	6V-8801	3/8-16NC NUT
9	10	155-1165	1/4-20NC X 1.25 CAP SCREW -SS
10	14	149-2148	1/4-20NC X 1.00 CAP SCREW - SS
11	82	8T-4205	1/4" FLAT WASHER
12	39	3B-4504	1/4" LOCK WASHER
13	39	6V-8185	1/4-20NC NUT
14	1	47E130	AC LOAD PAN HARNESS ASSEMBLY
15	4	1127521	10-24NC X 5.00 SCREW
16	8	33074	#10 FLAT WASHER
17	4	33614	#10 LOCK WASHER
18	4	36028	10-24NC NUT
19	1	3S-2093	WHITE CABLE TIE
20	2	210-4757	1/2-13NC BRONZE NUT
21	4	362-3586	1/2" BRONZE FLAT WASHER
22	2	361-2031	1/2" BRONZE LOCK WASHER
23	1	362-3494	1/2-13NC X 3 BRONZE BOLT
24	1	47C150	LOAD PAN ASSEMBLY
25	1	47E107	AC DISTRIBUTION HARNESS ASSEMBLY
26	1	52E200	D.C. LOAD PAN HARNESS ASSEMBLY
27	2	200-4541	SHUTDOWN SWITCH (6X-288)
28	4	2N-3477	6-32NC X 1.25 SCREW
29	4	33610	#6 LOCK WASHER
30	8	33070	#6 FLAT WASHER
31	4	4B-2041	6-32NC NUT
32	2	3P-9554	GROMMET
33	2	KTSR-3	REAR TERMINAL KIT
34	1	47C152	CIRCUIT BREAKER MOUNTING PLATE
35	34	8451A63	TRIMLOCK
36	2	8T-4223	WASHER - HARD 1/2"
37	1	8T-8917	BOLT - 1/2"-13 X 1-1/4"
38	1	6V-8188	NUT - 1/2"-13
39	1	3B-4508	WASHER - LOCK 1/2"
40	1	57E368	NEUTRAL CONNECTION BAR
41	35	6K-0806	CABLE TIE
42	1	5P-5148	STRAP - CABLE
43	1	47E210	LOAD PAN CONNECTION GROUP
44	1	47E230	HARNESS - GENERATOR SPACE HEATER
45	1	9N-1394	L BRACKET
46	1	0708778	VINYL CLIP 3/4"
47	1	345-8531	3/8" FLANGED BOLT
48	2	198-2970	3/8" FLANGED NUT
49	17	8T-8908	1/4"-20 X 1" BOLT
50	3	4L-9337	3/8"-16NC X 1-1/2" BOLT
51	2	3E-9865	1/4"-20 NYLOCK NUT
52	1	9M-5775	MAT - BATTERY

07/22/14	UPDATE CLIP - ITEM #46	DATE	BY
07/10/14	ADD MOUNTING HARDWARE FOR AC DISTRIBUTION HARNESS & NEW CABLE CONN GP		
06/26/14	PDP		
06/17/14	PDP		
02/25/14	REVISE FOR PRODUCTION		
ND			

ALTORFER 6315 W. FAUBER RD. BARTONVILLE, IL 61607 PHONE (309) 697-1234 FAX (309) 282-7546

THIS DOCUMENT CONTAINS PROPRIETARY INFORMATION OF ALTORFER, INC. WITHOUT THE WRITTEN PERMISSION OF ALTORFER, INC., ANY COPYING OR OTHER USE EXCEPT THAT FOR WHICH IT WAS INTENDED IS PROHIBITED

ALL DIMENSIONS IN INCHES UNLESS OTHERWISE SPECIFIED	FILE DF\47A	PROJECT REFERENCE APS100T4i RENTAL UNIT
TOLERANCES: X.X ± 0.100 X.XX ± 0.060 X.XXX ± 0.005	THIRD ANGLE PROJECTION	SCALE/SHEET SIZE 1=10/C
ANGULAR ± 1'	SHEET 1 OF 1	DATE 09/20/2013
TITLE	APS100T4i QUAD VOLTAGE LOAD PAN GROUP	WORK ORDER NUMBER
		QUOTE NUMBER
		DRAWING NUMBER 47E211-05