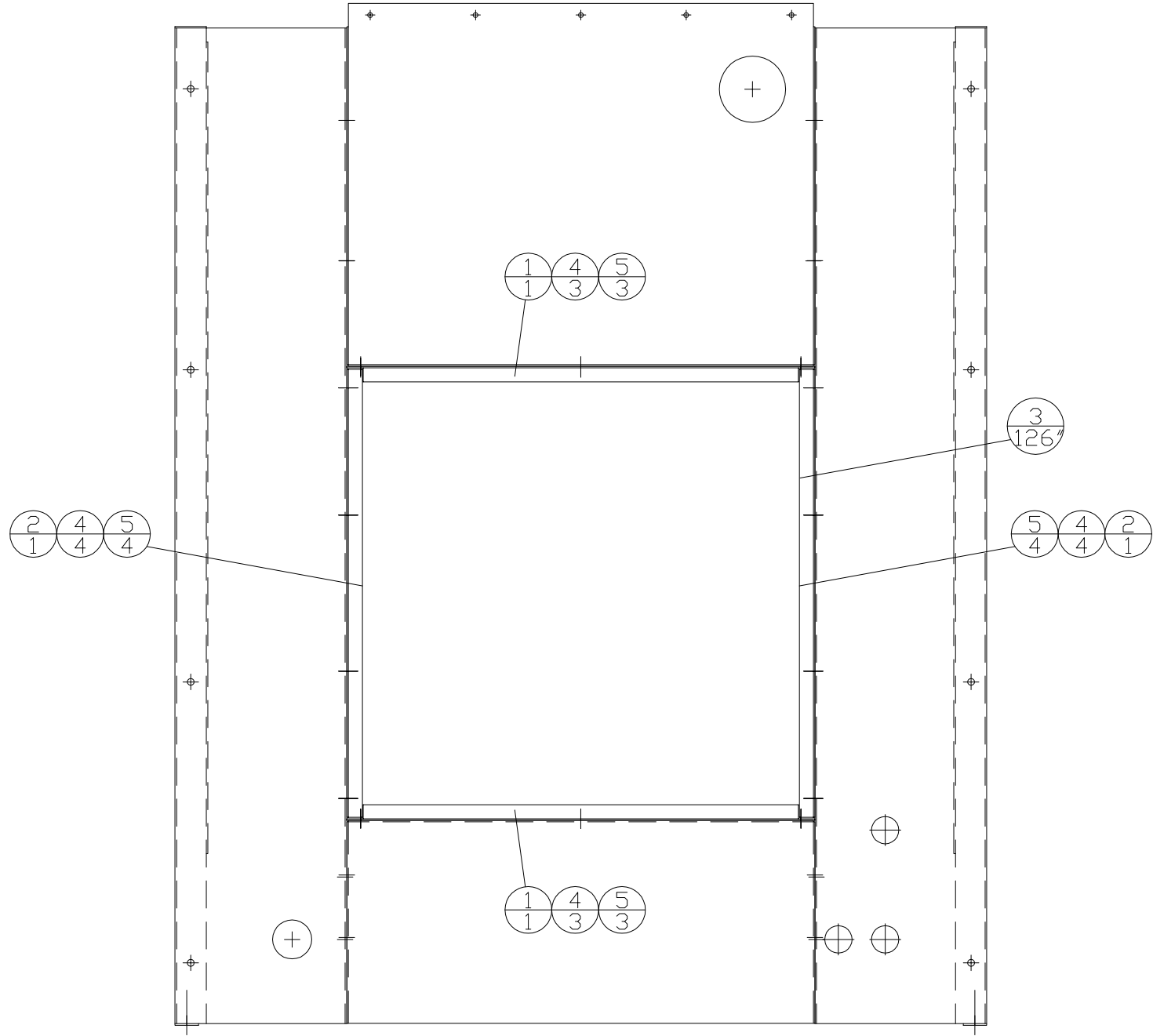


INCH 47A133

ITEM	QTY.	PART NO.	DESCRIPTION	WEIGHT
1	2	47C552	RAD DUCT TOP/BOTTOM - 14Ga - 30.00x5.86	4
2	2	47C553	RAD DUCT SIDE - 14Ga - 28.70x5.86	4
3	126"	3E-6697	BEADED TRIMLOCK	-
4	14	317-5700	S.S. NEOPRENE FLAT WASHER	-
5	14	8T-8908	BOLT 1/4"-20NC	-



NOTE A ITEMS 1 AND 2 RECEIVED IN 47C554 BM

		<b>ALTORFER POWER SYSTEMS</b> 6315 W. FAUBER RD.      PHONE (309) 697-1234 BARTONVILLE, IL 61607      FAX (309) 282-7546		
		THIS DOCUMENT CONTAINS PROPRIETARY INFORMATION OF ALTORFER, INC. WITHOUT THE WRITTEN PERMISSION OF ALTORFER, INC., ANY COPYING OR OTHER USE EXCEPT THAT FOR WHICH IT WAS INTENDED IS PROHIBITED		
CHANGE NOTICE	DATE BY	ALL DIMENSIONS IN INCHES UNLESS OTHERWISE SPECIFIED	FILE DF/47A	PROJECT REFERENCE APS100 RENTAL PACKAGE
		TOLERANCES: XX ± 0.100 X.XX ± 0.060 X.XXX ± 0.005	THIRD ANGLE PROJECTION	SCALE/SHEET SIZE 1=10/B
		ANGULAR ± 1°		SHEET 1 OF 1
		TITLE	DRAWN BY BML	
2	1	APS100 RADIATOR DUCT MOUNTING GROUP		DATE 06/10/14
				WORK ORDER NUMBER
				DATE 06/10/14
				DRAWING NUMBER 47A133