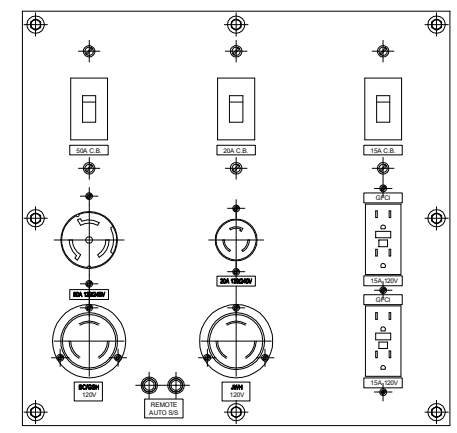
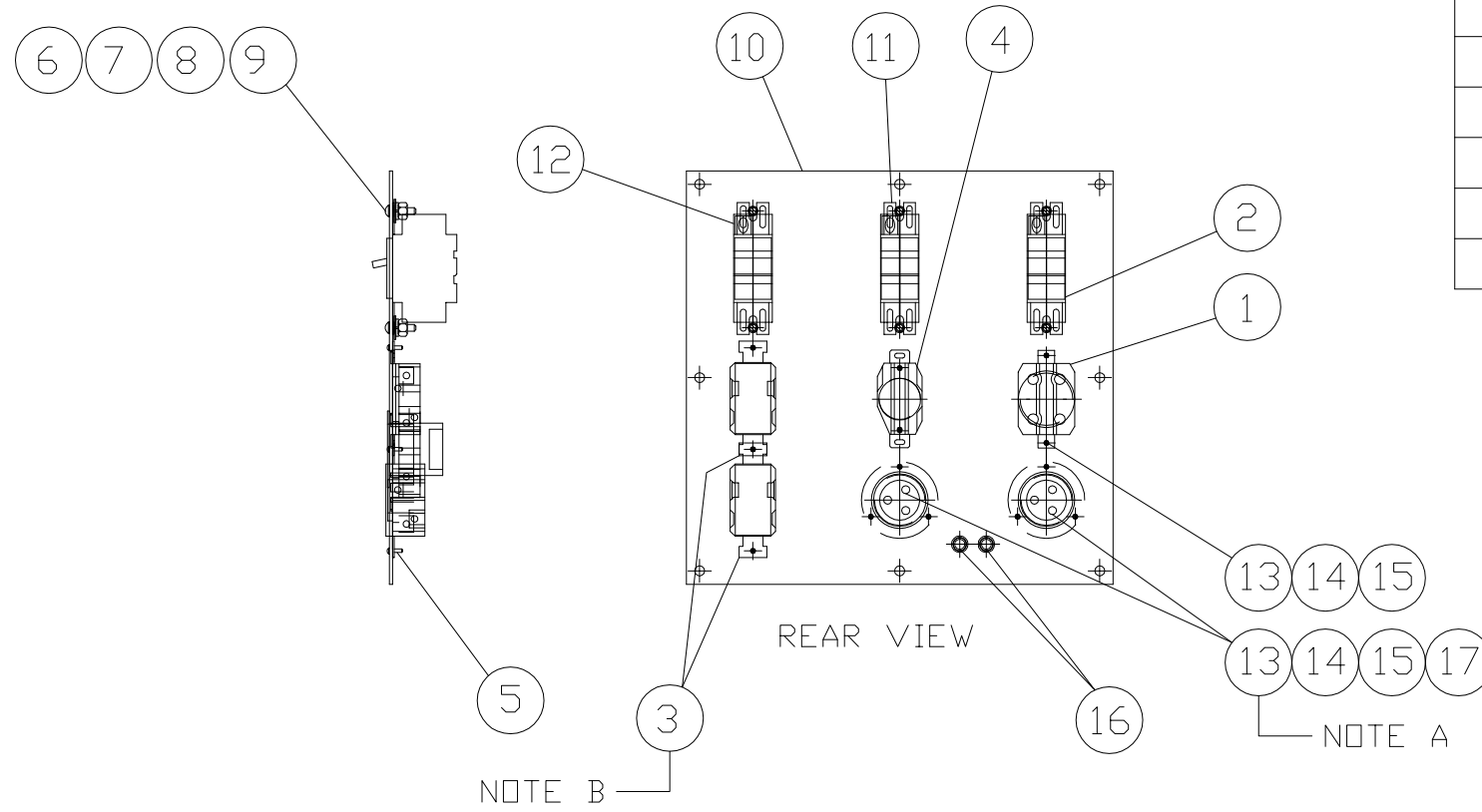


INCH 47A131-01

ITEM	QTY	CAT P/N	ALTORFER P/N	DESCRIPTION
1	1	266-5835	CS636-9	50A 250V TWIST LOCK RECEPT.
2	1	382-1531	EQDUR250	50A 250V 2-POLE CIRCUIT BREAKER
3	2	382-4524	7899-W	20A 125V GFCI RECEPTACLE
4	1	197-1875	2320	20A 250V TWIST LOCK RECEPT.
5	5	9X-6259	-----	#6-32 X 3/8" SCREW
6	6	033-8755	-----	1/4"-20NC X 1" SS SCREW
7	6	224-6797	-----	1/4" SS FLAT WASHER
8	6	158-0591	-----	1/4" SS LOCK WASHER
9	6	220-7208	-----	1/4"-20NC SS NUT
10	1	-----	47C305	A.C. DISTRIBUTION PLATE
11	1	382-1532	EQDUR220	20A 2-POLE CIRCUIT BREAKER
12	1	294-0419	EQDUR215	15A 2-POLE CIRCUIT BREAKER
13	10	6V-9499	-----	#6 FLAT WASHER
14	8	7T-9864	-----	#6-32 NUT
15	8	139-8395	-----	#6-63 X 1/2" SCREW
16	2	266-6450	REMOTE S/S	REMOTE SS BINDING POST
17	2	267-9125	2615	30A TWIST LOCK FLANGED INLET



NOTE A: ASSEMBLED AFTER LOAD PAN  
INSTALLATION INTO ENCLOSURE

NOTE B: LAY THE UPPER GFCI ON TOP OF  
THE LOWER GFCI WHEN SETTING THEM ON  
THE REAR OF THE PLATE.

2	1	ND.	04/01/14	DATE		<b>ALTORFER POWER SYSTEMS</b> 6315 W. FAUBER RD.      PHONE (309) 697-1234 BARTONVILLE, IL 61607      FAX (309) 282-7546	
			REVISIONS	BY		THIS DOCUMENT CONTAINS PROPRIETARY INFORMATION OF ALTORFER, INC. WITHOUT THE WRITTEN PERMISSION OF ALTORFER, INC., ANY COPYING OR OTHER USE EXCEPT THAT FOR WHICH IT WAS INTENDED IS PROHIBITED	
CHANGE NOTICE			REVISE FOR PRODUCTION (PLUS MINOR REVISIONS THRU 6/13/14)	FILE	PROJECT REFERENCE		
TOLERANCES: X.X ± 0.100 X.XX ± 0.060 X.XXX ± 0.005			THIRD ANGLE PROJECTION	DF\47A	APS60T4i / APS100T4i RENTAL UNITS		
ANGULAR ± 1°				SCALE/SHEET SIZE	DRAWN BY	QUOTE NUMBER	
				1=10/A	D. ROLING	-	
				SHEET	DATE	WORK ORDER NUMBER	
				1 OF 1	07/30/2013	-	
				TITLE	DRAWING NUMBER		
				CONNECTION GP - AC DISTRIBUTION	47A131-01		
				APS60/APS100			