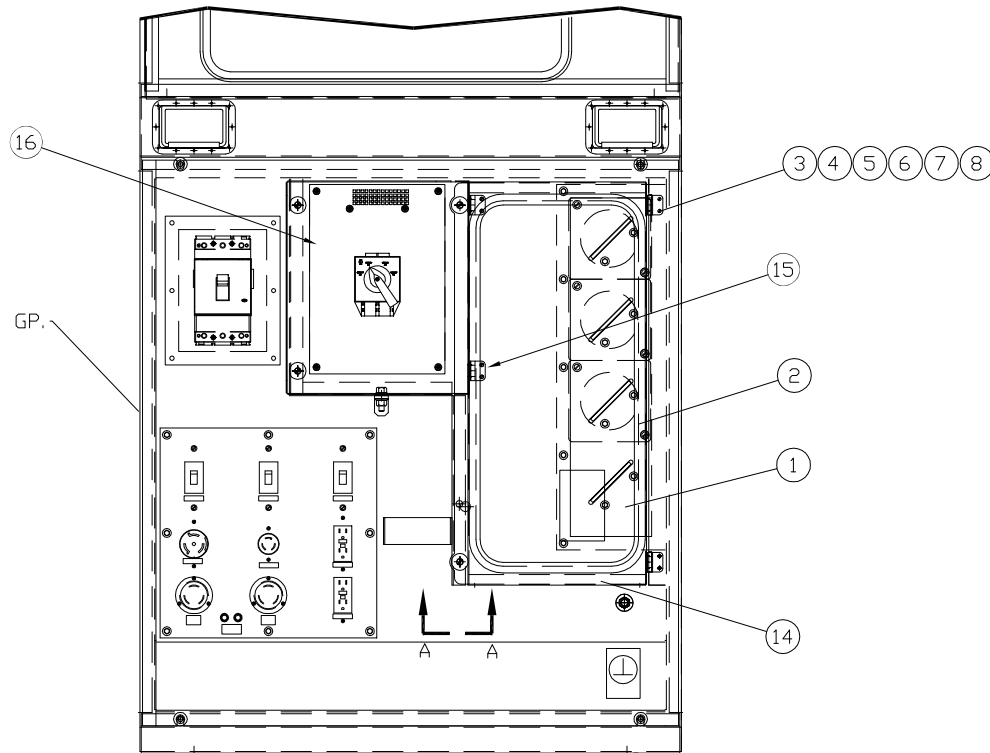


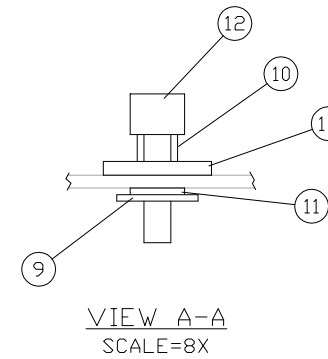
INCH 47A123-01

ITEM	QTY.	PART NO.	DESCRIPTION	WEIGHT
1	1	54C247	LOAD COVER WINDOW	4
2	1	AS990	WINDOW GROMMET- 70" Lg.	1
3	16	33614	#10 LOCK WASHER	1
4	16	36028	#10-24 NUT	-
5	16	33074	#10 FLAT WASHER	-
6	16	72158	#10-24x.75 TAPERED HEAD SCREW	-
7	4	SSHINGE	HINGE	1
8	8	54D148	HINGE - LOAD GASKET	-
9	4	90102A030	SPLIT RETAINING PIN	-
10	4	9435K5	SPRING	-
11	4	95630A445	TEFLON FLAT WASHER	-
12	4	91035A625	THUMB SCREW	-
13	4	317-5700	1/4" NEOPREME BACKED FLAT WASHER	-
14	1	47C459	LOAD COVER DOOR ASSEMBLY	11
15	1	47C460	DOOR CATCH - LOAD DOOR	1
16	1	47C457	COB COVER DOOR ASSEMBLY	7
TOTAL				26

REF. 47A113 DUAL VOLTAGE ENCL. GP.



NOTE:  
ITEMS 14,15,16 PROVIDED IN THE ENCLOSURE KIT (47C500 BM).



2	1	NO.	DATE	BY	<b>ALTORFER POWER SYSTEMS</b> 6315 W. FAUBER RD.      PHONE (309) 697-1234 BARTONVILLE, IL 61607      FAX (309) 282-7546			
					THIS DOCUMENT CONTAINS PROPRIETARY INFORMATION OF ALTORFER, INC. WITHOUT THE WRITTEN PERMISSION OF ALTORFER, INC., ANY COPYING OR OTHER USE EXCEPT THAT FOR WHICH IT WAS INTENDED IS PROHIBITED.			
REVISE FOR PRODUCTION		CHANGE NOTICE		FILE		PROJECT REFERENCE		
ALL DIMENSIONS IN INCHES UNLESS OTHERWISE SPECIFIED		TOLERANCES: X.X ± 0.100 X.XX ± 0.060 X.XXX ± 0.005		THIRD ANGLE PROJECTION		SCALE/SHEET SIZE		
ANGULAR ± 1°				1=10/C		DRAWN BY		
TITLE		SHEET		1 OF 1		DATE		
APS60/100T4i LOAD DOOR MOUNTING GROUP						07/29/2013		
						QUOTE NUMBER		
						WORK ORDER NUMBER		
						DRAWING NUMBER		
						47A123-01		