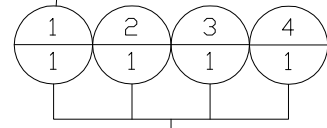
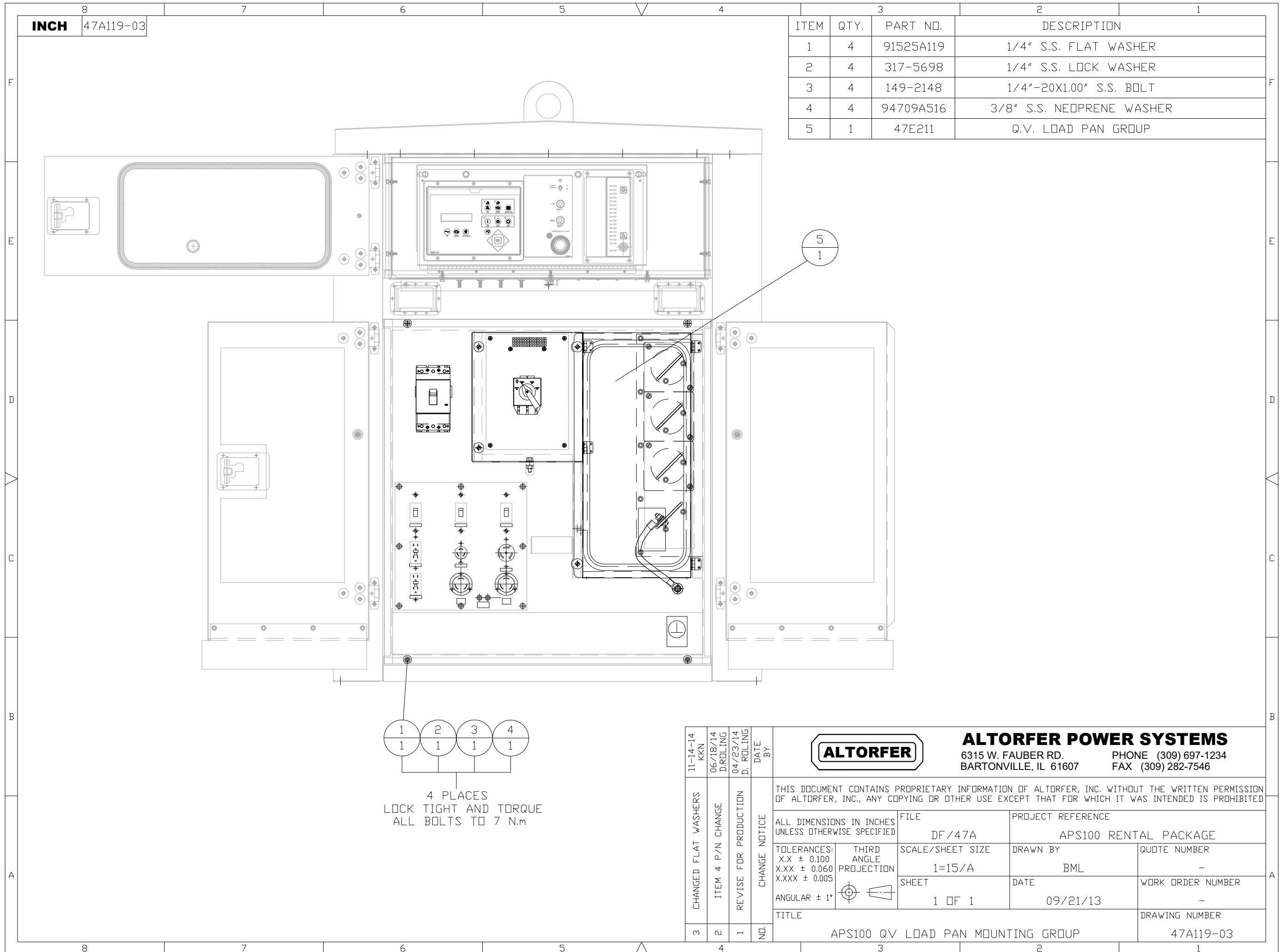


INCH 47A119-03

ITEM	QTY.	PART NO.	DESCRIPTION
1	4	91525A119	1/4" S.S. FLAT WASHER
2	4	317-5698	1/4" S.S. LOCK WASHER
3	4	149-2148	1/4"-20X1.00" S.S. BOLT
4	4	94709A516	3/8" S.S. NEOPRENE WASHER
5	1	47E211	Q.V. LOAD PAN GROUP



4 PLACES  
LOCK TIGHT AND TORQUE  
ALL BOLTS TO 7 N.m

11-14-14 KKN	06/18/14 D.ROLLING	04/23/14 D.ROLLING	DATE BY		<b>ALTORFER POWER SYSTEMS</b> 6315 W. FAUBER RD.      PHONE (309) 697-1234 BARTONVILLE, IL 61607      FAX (309) 282-7546		
CHANGED FLAT WASHERS	ITEM 4 P/N CHANGE	REVISE FOR PRODUCTION	CHANGE NOTICE		THIS DOCUMENT CONTAINS PROPRIETARY INFORMATION OF ALTORFER, INC. WITHOUT THE WRITTEN PERMISSION OF ALTORFER, INC., ANY COPYING OR OTHER USE EXCEPT THAT FOR WHICH IT WAS INTENDED IS PROHIBITED		
3	2	1	NO.	ALL DIMENSIONS IN INCHES UNLESS OTHERWISE SPECIFIED  TOLERANCES: X.X ± 0.100 X.XX ± 0.060 X.XXX ± 0.005  ANGULAR ± 1°	FILE DF/47A  SCALE/SHEET SIZE 1=15/A  SHEET 1 OF 1	PROJECT REFERENCE APS100 RENTAL PACKAGE  DRAWN BY BML  DATE 09/21/13	QUOTE NUMBER -  WORK ORDER NUMBER -  DRAWING NUMBER 47A119-03
				TITLE APS100 QV LOAD PAN MOUNTING GROUP			