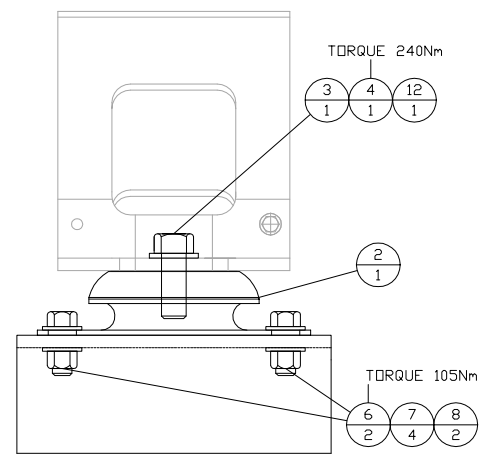
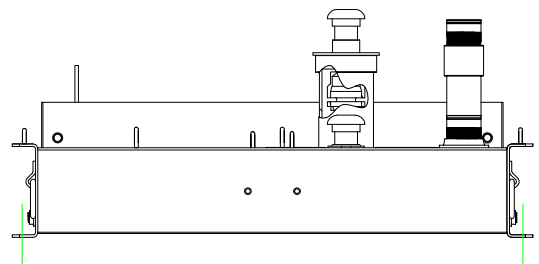
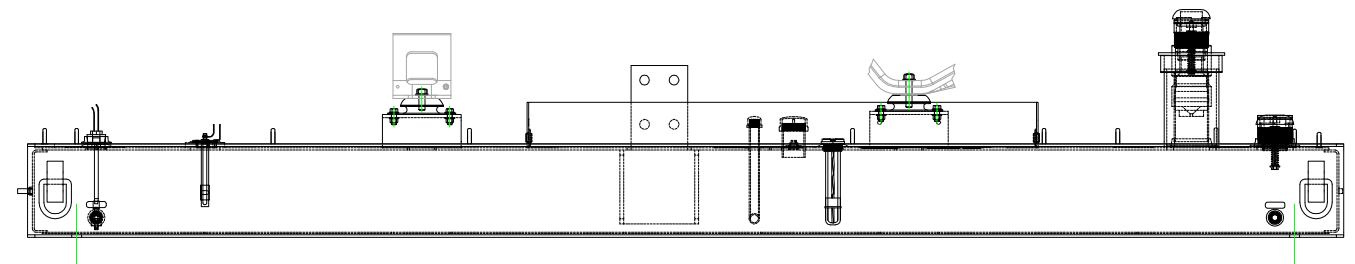
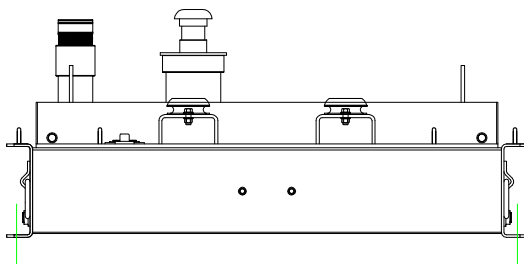
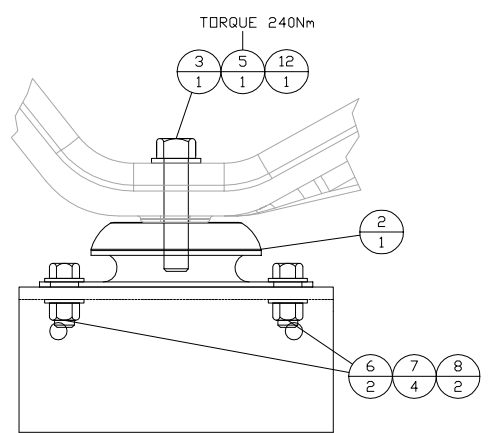


| ITEM | QTY. | DESCRIPTION | WEIGHT |
|-------|------|---------------------------------------|--------|
| 1 | 1 | 47B130 - APS60-100 UAI BASE ASSEMBLY | 1,716 |
| 2 | 4 | 266-2819 - MOUNT ASSEMBLY (ISOLATORS) | 2 |
| 3 | 4 | 8T-4122 - FLAT WASHER | - |
| 4 | 2 | 7X-2553 - BOLT M16-2x40mm | - |
| 5 | 2 | 8T-4140 - BOLT M16x2-60mm | - |
| 6 | 8 | 8T-8917 - BOLT 1/2"x13NCx1.25"Lg | - |
| 7 | 16 | 8T-4223 - FLAT WASHER | - |
| 8 | 8 | 6V-8188 - NUT 1/2"x13NC | - |
| 9 | 1 | 47E206 - RUPTURE ALARM SWITCH | 2 |
| 10 | 1 | F8680L75 - FUEL LEVEL GAUGE | 1 |
| 11 | 1 | 47E207 - FUEL LEVEL SENDER | 2 |
| 12 | 4 | 3B-4510 - LOCK WASHER | - |
| TOTAL | | | 1,725 |

APS60 POWER PACKAGE WEIGHT = 2,290 lbs
 APS100 POWER PACKAGE WEIGHT = 2,690 lbs



VIEW A-A (GENERATOR MOUNT) x 2 PLACES
SCALE=4:1



VIEW B-B (ENGINE MOUNT) x 2 PLACES
SCALE=4:1

| NO. | CHANGE NOTICE | DATE | BY |
|-----|-----------------------|----------|-----|
| 4 | ADDED ITEM 12 | 06/06/14 | BML |
| 3 | UPDATED ITEM 3 AND 11 | 05/19/14 | BML |
| 2 | UPDATED FOR PROD. | 04/17/14 | BML |
| 1 | UPDATED HARDWARE | 02/21/14 | BML |

ALTORFER

ALTORFER POWER SYSTEMS
 6315 W. FAUBER RD. PHONE (309) 697-1234
 BARTONVILLE, IL 61607 FAX (309) 282-7546

THIS DOCUMENT CONTAINS PROPRIETARY INFORMATION OF ALTORFER, INC. WITHOUT THE WRITTEN PERMISSION OF ALTORFER, INC., ANY COPYING OR OTHER USE EXCEPT THAT FOR WHICH IT WAS INTENDED IS PROHIBITED

| | | | |
|---|--------------------------------------|-------------------|--------------------------|
| FILE | DF/47A | PROJECT REFERENCE | APS60-100 RENTAL PACKAGE |
| TOLERANCES: X.X ± 0.100 X.XX ± 0.060 X.XXX ± 0.005 | THIRD ANGLE PROJECTION | SCALE/SHEET SIZE | DRAWN BY |
| ANGULAR ± 1° | | 1=10/D | BML |
| TITLE | MOUNTING GROUP - FUEL BASE APS60-100 | DATE | 11/01/13 |
| | | WORK ORDER NUMBER | - |
| | | DRAWING NUMBER | 47A109-4 |