

CAT® MINI EXCAVATOR ATTACHMENT OPTIONS

» Get Multiple Machines Out of One

For more information,
visit [Cat.com/attachments](https://www.cat.com/attachments)
or contact your local
Cat dealer.



LET'S DO THE WORK.™

AEXQ1584-03 March 2019

© 2019 Caterpillar. All Rights Reserved. CAT, CATERPILLAR, LET'S DO THE WORK, their respective logos, "Caterpillar Yellow," the "Power Edge" trade dress, Cat "Modern Ho," as well as corporate and product identity used herein, are trademarks of Caterpillar and may not be used without permission.

LET'S DO THE WORK.™



DO MORE WITH ONE MACHINE.

Invest in what you already own — give your machine Cat® attachments and equip it to do more. And because our attachments are engineered, balanced and tested to each Cat model, they promise to minimize stress and optimize performance. Browse our lineup and find the tools to make your work easier.



AUGERS



Bore with better efficiency.

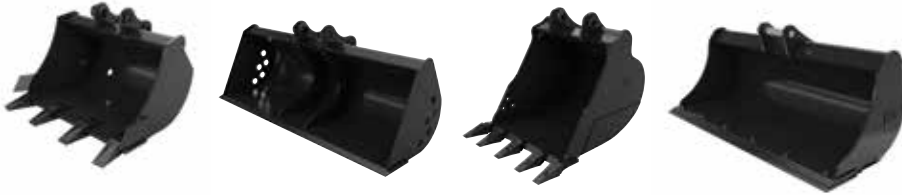
Cat augers offer different speed and torque options for work in a variety of soils. The speed and torque are engineered to extract soil efficiently and prevent stalling in dense ground. Select from a range of auger bits.

Specifications

Attachment Models	Compatibility	Drive Shaft Torque @ Max Pressure		Drive Method
		Nm	(lb ft)	
A7B	MHEX	1105	(815)	Direct Drive
A14B	MHEX	2304	(1700)	Direct Drive
A19B	MHEX	4118	(3037)	Single Planetary
A26B	MHEX	6826	(5034)	Double Planetary

MHEX = Mini Excavator

BUCKETS



The shape of Cat buckets improves digging, loading and material retention. Compared to most competition, we have more capacity per every inch of width. And each is made of high-strength, tempered steel. Select from a range of bucket teeth.

Specifications

Attachment Models	Compatibility	Width Range		Capacity Range	
		mm	(in)	m ³	(yd ³)
Digging	MHEX	230-700	(9-28)	0.014-0.111	(0.018-0.145)
Ditch Cleaning	MHEX	700-1800	(28-71)	0.027-0.42	(0.035-0.55)
Tilting Ditch Cleaning	MHEX	1000-1600	(40-63)	0.055-0.28	(0.071-0.366)
Heavy Duty	MHEX	300-1067	(12-42)	0.05-0.39	(0.065-0.51)
Heavy Duty Capacity	MHEX	300-915	(12-36)	0.082-0.54	(0.065-0.71)
Heavy Duty Rock	MHEX	610-762	(24-30)	0.23-0.31	(0.30-0.405)
Mud/Grading	MHEX	1000-1800	(39-71)	0.09-0.68	(0.12-0.89)

MHEX = Mini Excavator

COMPACTION WHEELS



Cat compaction wheels provide a low cost option for trench compaction. The wheels feature tapered roller bearings and tampered foot design with static pad rollers, to allow for smooth operation and achieving a high level of compaction. Six to ten passes are usually adequate to achieve compaction in normal soil conditions, dependent on the required compaction levels.

Specifications

Attachment Models	Compatibility	Weight		Width		Number of Wheels
		kg	(lbs)	mm	(in)	
305 mm (12 in)	MHEX, BHL	155-435	(342-959)	292-356	(12-24)	2
406 mm (16 in)	MHEX	216-240	(476-528)	399	(16)	3
457 mm (18 in)	MHEX, BHL	487-574	(1074-1266)	439-449	(17-18)	3
559 mm (22 in)	MHEX	273-593	(569-1307)	559	(22)	3-4
610 mm (24 in)	MHEX, BHL	518-581	(1142-1281)	559	(22)	3
914 mm (36 in)	MHEX, BHL	882-899	(1945-1982)	884	(36)	5

MHEX = Mini Excavator BHL = Backhoe Loader

COUPLERS



Cat Dual Lock™ pin grabber couplers allow operators to change attachments in seconds, increasing job efficiency and enabling one machine to do multiple tasks. We offer two, easy-to-use options: hydraulic (controlled from the cab) and mechanical. And all Cat models include primary and secondary locking systems to ensure what you put on your machine, stays on.

Specifications

Attachment Models	Compatibility *	Unit Weight	
		kg	lbs
Dual Lock™	MHEX	12-110	(29-206)
Dual Lock™ Tilt	MHEX	112-180	(247-398)

MHEX = Mini Excavator
 * Only available on 304, 305, 305.5, 307, 307.5, 308, 309

FLAIL MOWERS



Cat flail mowers are designed for high performance cutting of vegetation, saplings, overgrown agricultural areas, retention ponds, and forested terrain. The hydraulic flail mowers reduce weeds, saplings, shrubs and small trees into mulched material, making them ideal for environmental maintenance applications, such as mowing along ditches, fence rows and retention ponds, controlling overgrowth, and cleaning up high banks and slopes.

Specifications

Model	Compatibility	Overall Width		Working Width		Swinging Teeth Per Drum
		mm	(in)	mm	(in)	
HMF110	MHEX	1184	(47)	1000	(40)	16
HMF210	MHEX	1184	(47)	1000	(40)	16

MHEX = Mini Excavator

HAMMERS



Cat hammers were designed for hard hits, reducing rock and concrete materials. Each features an automatic shut-off and buffering system to reduce machine vibrations. And some of our hammers are fully enclosed to suppress noise.

Specifications

Attachment Models	Compatibility	Operating Weight*		Impact Frequency	Tool Diameter	
		kg	(lb)		mm	(in)
B4, B4s	MHEX	289-294	(637-648)	600-1000	53	(2.1)
B6, B6s	MHEX	394-411	(869-906)	500-900	68	(2.7)
B8, B8s	MHEX	440-454	(970-1000)	400-800	75	(2.9)
H25D	MHEX	70	(154)	1000-1900	36	(1.42)
H35s	MHEX	125-130	(276-287)	600-1800	40	(1.57)
H45s	MHEX	145-250	(320-551)	780-1800	50	(1.97)
H55	MHEX	250-340	(551-750)	600-1680	58	(2.28)
H55s	MHEX	260-345	(573-761)	600-1680	58	(2.28)
H65	MHEX	305-380	(673-838)	720-1740	68	(2.68)
H65s	MHEX	315-390	(695-860)	720-1740	68	(2.68)
H75s	MHEX	480-500	(1058-1103)	840-1650	74.5	(2.93)
H95s	MHEX	600-730	(1323-1610)	700-1260	87.5	(3.44)

MHEX = Mini Excavator
* Operating weight includes hammer, standard tool and mounting bracket.

MULCHERS



Cat mulchers are designed for high performance cutting and mulching of vegetation, saplings, and undergrowth from overgrown agricultural areas and forested terrain. The hydraulic mulchers reduce saplings, shrubs and trees into mulched material, making it ideal for environmental maintenance, such as brush clearing and creating fire lanes. Other applications include: reclaiming untilled land, removing foliage from building construction sites and shredding pruned material and organic waste for biomass production.

Specifications

Model	Compatibility	Overall Width		Working Width		Fixed Teeth Per Drum
		mm	(in)	mm	(in)	
HM208	MHEX	1026	(40)	818	(32)	15
HM210	MHEX	1026	(48)	1012	(40)	18

MHEX = Mini Excavator

RIPPERS



Built to cut through dense dirt, loosen rocky soil and break below the frost layer, Cat rippers are taking on some of the most challenging ground conditions. And because they're made for specific Cat models, they can better transfer machine power into ripping power.

Specifications

Attachment Models (Shank Length)		Compatibility	Width		Height		Tip Radius		Weight	
mm	(in)		mm	(in)	mm	(in)	mm	(in)	kg	(lb)
490	(19)	MHEX	232	(9.1)	660	(25.9)	650	(26)	45	(99)
676	(27)	MHEX	273	(10.7)	825	(32.4)	810	(32)	61	(134)
861	(34)	MHEX	346	(13.6)	1074	(42.2)	1039	(41)	107	(235)
940	(37)	MHEX	420	(17)	1164	(46)	1120	(44)	170	(325)

MHEX = Mini Excavator

SHEARS



Cat shears rotate 360 degrees for rapid repositioning and are designed with a straight, lower jaw to improve the cutting force.

Specifications

Attachment Model	Compatibility	Throat Force		Weight (boom-mount)	Jaw Opening		Jaw Depth		
		kN	(Sh Ton)		mm	(in)	mm	(in)	
S305	MHEX	1812	(204)	608	(1,340)	240	(9.4)	290	(11.4)

MHEX = Mini Excavator

THUMBS



Cat thumbs work with buckets to grab, pick or sort material. They are hydraulically controlled from the cab, opening and closing around loads. And when you don't need it, the thumb can retract against the machine stick.

Specifications

Attachment Model	Compatibility	Rotation Angle (Degrees)
Hydraulic	MHEX	116-133
Stiff Link	MHEX	81
Hydraulic Progressive Link *	MHEX	174-181

MHEX = Mini Excavator
 * Hydraulic Progressive Link thumb only available on 307, 307.5, 308, 309

VIBRATORY PLATE COMPACTORS



Cover more ground with the Cat vibratory plate compactor's large surface and pack soil faster with its high-power pulses. Flexible isolators are built in to guard against excessive vibrations.

Specifications

Attachment Models	Compatibility	Impulse Force		Cycles min	Base Plate Width	
		kN	(lbf)		mm	(in)
CVP16	MHEX	16	(3650)	2200	305	(12)
CVP40	MHEX	40	(8928)	2200	584	(23)

MHEX = Mini Excavator

GROUND ENGAGING TOOLS (GET)

Choosing the right GET is critical. Each is engineered to maximize machine performance in specific applications, reducing resistance while boring, digging or scraping. Our GET also protect heavy-wear areas, extending attachment life and lowering maintenance costs.

AUGER BITS



Standard Bit

- Factory standard
- For drilling holes with a large diameter



Tree Bit

- Tapered tip
- For drilling holes with a large mouth and narrow base to properly fit a root ball or holes with a small diameter to fill with mulch or fertilizer



Industrial Bit

- Excellent tooth retention while digging
- Allows for easy removal and installation



Standard Rock Drill Head Bit

- Transforms a standard bit into an industrial bit
- For severe ground conditions including rock and various types of concrete
- Bolt-on design for easy removal when returning to normal conditions

Auger bit sizes range from 152 to 914 mm (6 to 36 in) in diameter to a depth of approximately 1270 mm (50 in). Stackable extensions range from 305 to 1829 mm (12 to 72 in) in length and are available to enable deeper drilling.

BUCKET TEETH



Wide

- Low penetration
- Low impact applications
- Use to smooth ground surfaces



Extra Duty

- Moderate penetration
- Use in moderate impact applications
- More wear material



General Duty

- Moderate penetration
- Moderate impact and abrasive conditions



Penetration Plus

- Good penetration
- Moderate to high impact applications



Penetration

- Very good penetration
- Moderate impact and lower abrasive conditions
- Less wear material



Double Spike

- Very good penetration
- Use on fracturable materials
- Install in corner positions with spike centers



Spike

- Excellent penetration
- Use on cohesive materials
- Less wear material

QUICK REFERENCE

Find attachments made for your work.

	Augers	Buckets	Compaction Wheels	Couplers	Flail Mowers	Hammers	Mulchers	Rippers	Shears	Thumbs	Vibratory Plate Compactors
Agriculture	x	x	x	x	x	x	x			x	
Concrete Prep and Flatwork		x	x	x		x					x
Excavation and Earth Moving	x	x		x		x		x			
Finishing and Site Clean-Up		x	x	x	x	x	x			x	
Landscaping	x	x		x	x	x	x			x	
Material Handling		x		x		x					
Rental	x	x	x	x	x	x	x	x	x	x	x
Residential and Commercial Construction	x	x	x	x	x	x	x			x	x
Site Prep and Demolition		x		x		x		x	x	x	
Trenching and Utilities	x	x	x	x		x		x		x	x

Machine model availability and attachments vary by region. Please contact your local Cat dealer for availability.



WORK WITHOUT WORRY.

Ask your local Cat dealer about attachment warranty and extended protection plans. It's another way Caterpillar helps protect your investment.

