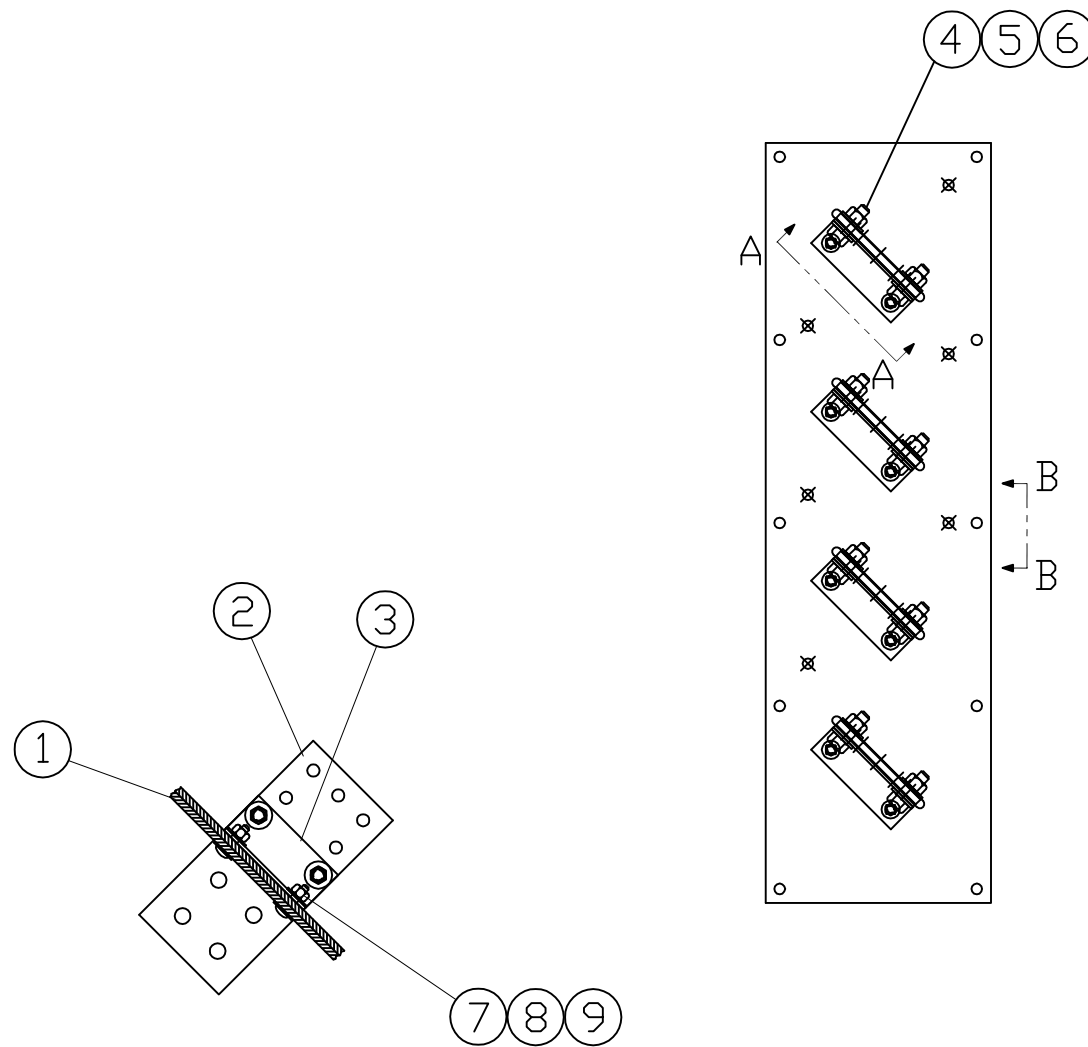
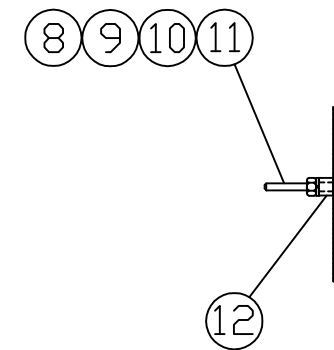


| COMP | QTY | DESCRIPTION | WEIGHT |
|------|-----|--------------------------------|--------|
| 1 | 2 | 54E101 0.25 GLAS. BUSS-MTG BRD | 2 |
| 2 | 4 | 54E102 0.25x4 COPPER BUSS-LOAD | 12 |
| 3 | 4 | 54E103 10GA FRMD STL BUSS-BRKT | 4 |
| 4 | 8 | 13107 3/8-16x1.25 BOLT | 1 |
| 5 | 16 | 33008 3/8" WASHER-FLAT | 1 |
| 6 | 8 | 36306 3/8-16 NUT | 1 |
| 7 | 8 | --- 1/4-20x1.25 BOLT-CARIGE | - |
| 8 | 14 | 36302 1/4-20 NUT | - |
| 9 | 22 | 33004 1/4" WASHER-FLAT | - |
| 10 | 6 | 71063 1/4" LOCKWASHER | - |
| 11 | 6 | --- 1/4-20x3.0 SCREW-TRUSSHD | - |
| 12 | 6 | 54E104 1/2" GLAS. TUBE SPACER | - |

TOTAL 21



SECTION A-A
TYP 4 PLACES



SECTION B-B
TYP ALL HOLES
MARKED "X"

| LOADBOARD ASSEMBLY | | | | | |
|--|--|--|--|------------------------------|--|
| ALTORFER PACKAGING | | ALTORFER POWER SYSTEMS #1 CAPITOL DRIVE P.O. BOX 2550 PH. 309-694-1234 EAST PEORIA, IL. 61611-0550 FAX 309-694-1262 | | ALTORFER PACKAGING | |
| JOB REF. | | | | DRN BY | |
| | | | | M. RANTA | |
| | | | | QUOTE NO. | |
| | | | | DATE | |
| | | | | 05-30-00 | |
| | | | | W/D NUMBER | |
| | | | | SCALE | |
| | | | | 1=10 FILE | |
| | | | | DRAWING NO. | |
| | | | | SHEET 1 OF 1 | |
| | | | | 54E100 | |
| PROPRIETARY INFORMATION UNAUTHORIZED DUPLICATION PROHIBITED | | | | | |