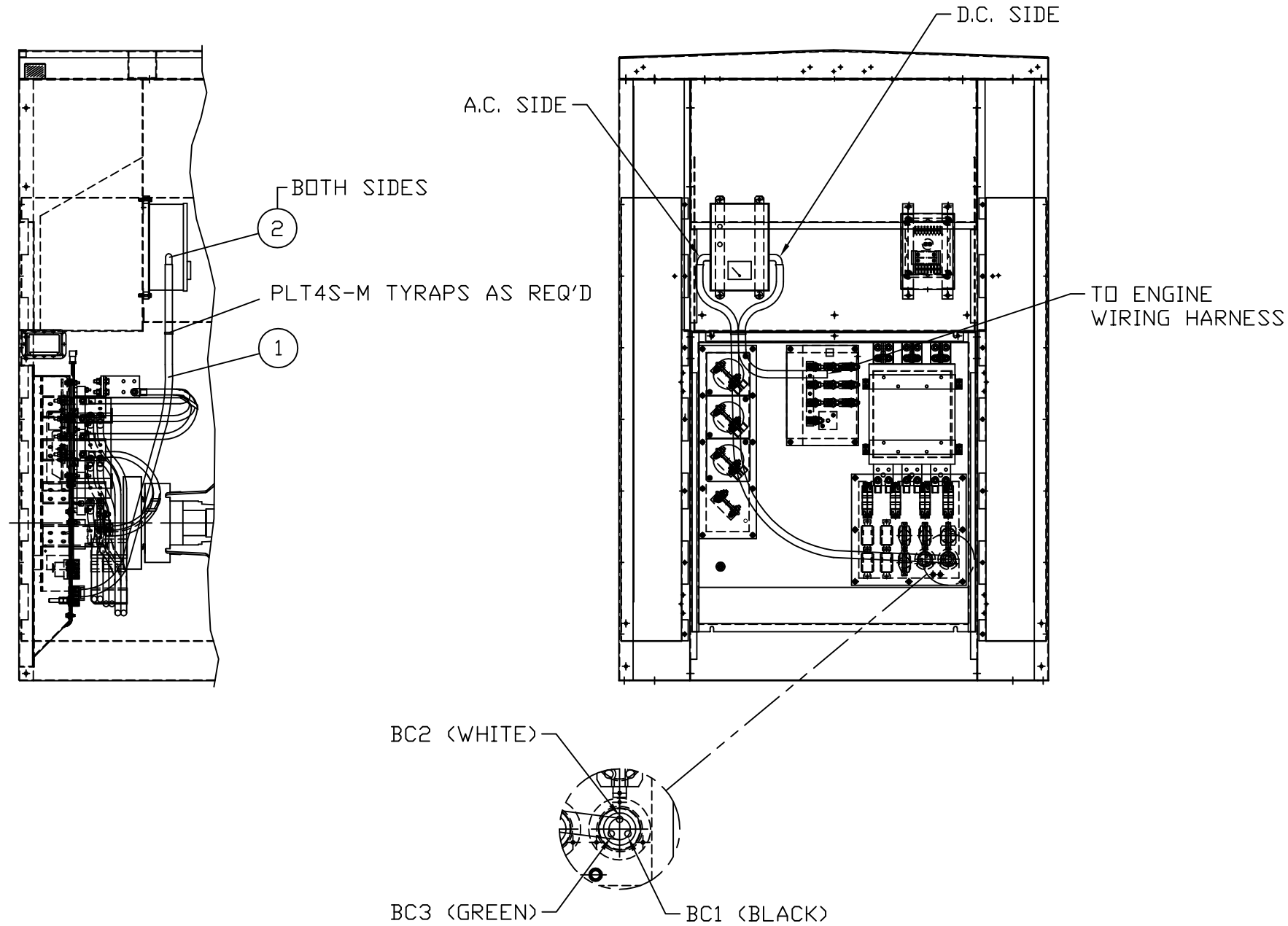


ITEM	QTY.	PART NUMBER	DESCRIPTION	WEIGHT
1	1	51E117-01	HARNESS-BATTERY CHARGER	1 Lbs
2	2	E2691	CONNECTOR (90°)	- Lbs
TOTAL				1 Lbs



10/27/15 D. ROLLING DATE	BY	ALTORFER			ALTORFER POWER SYSTEMS 6315 W. FAUBER RD. PHONE (309) 697-1234 BARTONVILLE, IL 61607 FAX (309) 282-7546		
		THIS DOCUMENT CONTAINS PROPRIETARY INFORMATION OF ALTORFER, INC. WITHOUT THE WRITTEN PERMISSION OF ALTORFER, INC., ANY COPYING OR OTHER USE EXCEPT THAT FOR WHICH IT WAS INTENDED IS PROHIBITED.					
UPDATE HARDWARE	CHANGE NOTICE	ALL DIMENSIONS IN INCHES UNLESS OTHERWISE SPECIFIED		FILE	PROJECT REFERENCE		
				DF\54A	XQ400 (3456) RENTAL UNIT		
		TOLERANCES: X.X ± 0.100 X.XX ± 0.060 X.XXX ± 0.005	THIRD ANGLE PROJECTION	SCALE/SHEET SIZE 1=10/D	DRAWN BY M. RANTA	QUOTE NUMBER -	
		ANGULAR ± 1°		SHEET 1 OF 1	DATE 12/20/2000	WORK ORDER NUMBER -	
2	1	NO.	DUAL VOLTAGE BATTERY CHARGER WIRING GROUP			DRAWING NUMBER 54A112-01	