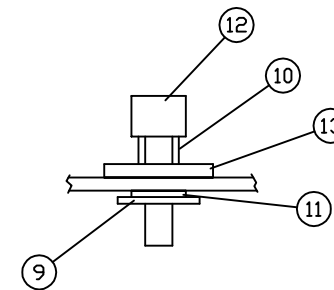
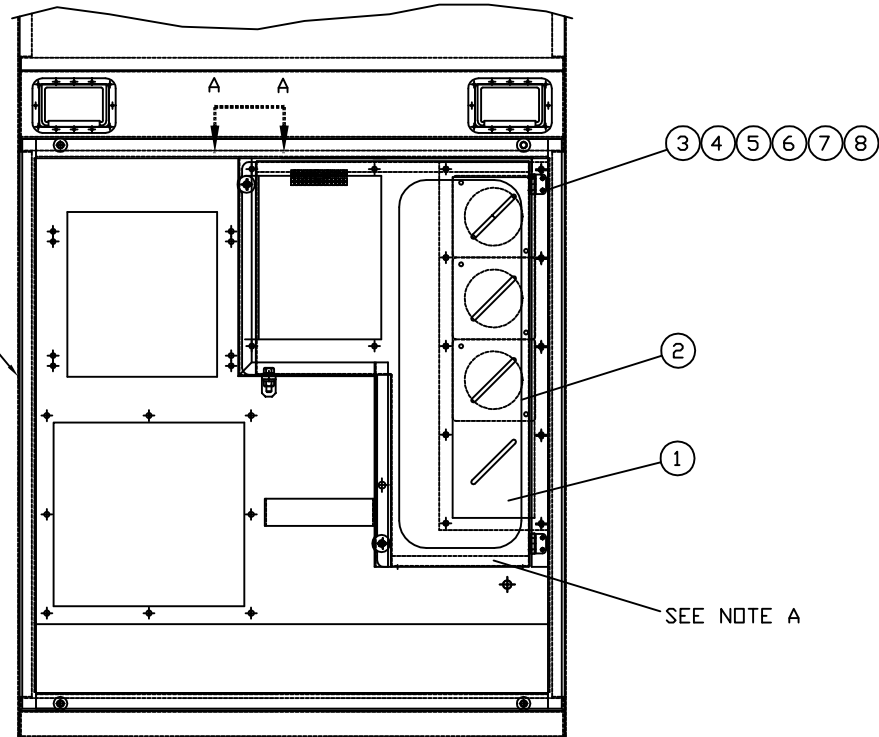


INCH 54A108-01

ITEM	QTY.	PART NUMBER	DESCRIPTION
1	1	54C126	PLEXIGLASS LOAD COVER
2	1	AS 990	WEATHERSTRIP
3	8	33614	WASHER-LOCK (#10)
4	8	36028	NUT (#10-24)
5	8	33074	WASHER-FLAT (#10)
6	8	6V-7978	SCREW (#10-24 X 3/4")
7	2	SSHINGE	HINGE-STAINLESS STEEL
8	4	54D148	GASKET-SS HINGE
9	2	90102A030	RING-SPLIT RETAINING
10	2	9435K5	SPRING-PANEL (1/4")
11	2	95630A445	WASHER-TEFLON
12	2	91035A625	SCREW-PANEL
13	2	317-5700	WASHER-NEOPRENE (1/4")

REF. 54A106 DUAL VOLTAGE ENCL. GP.
 54A125 CSA SINGLE VOLTAGE ENCL. GP.
 54A130 CSA DUAL VOLTAGE ENCL. GP.



VIEW A-A
SCALE=8X

NOTE A: 54C157 - LOAD COVER DOOR AS. RECEIVED
 IN 54C100 - ENCLOSURE PARTS GP.

10/26/15 DATE		ALTORFER		ALTORFER POWER SYSTEMS	
BY		6315 W. FAUBER RD.		PHONE (309) 697-1234	
		BARTONVILLE, IL 61607		FAX (309) 282-7546	
THIS DOCUMENT CONTAINS PROPRIETARY INFORMATION OF ALTORFER, INC. WITHOUT THE WRITTEN PERMISSION OF ALTORFER, INC., ANY COPYING OR OTHER USE EXCEPT THAT FOR WHICH IT WAS INTENDED IS PROHIBITED					
UPDATE HARDWARE		ALL DIMENSIONS IN INCHES UNLESS OTHERWISE SPECIFIED		PROJECT REFERENCE	
CHANGE NOTICE		FILE DF/54A		XQ400 (3456) RENTAL UNIT	
NO.		TOLERANCES: X.X ± 0.100 X.XX ± 0.060 X.XXX ± 0.005		DRAWN BY M. RANTA	
1		THIRD ANGLE PROJECTION		DATE 07/10/2000	
2		ANGULAR ± 1°		WORK ORDER NUMBER -	
		SHEET 1 OF 1		DRAWING NUMBER 54A108-01	
		TITLE XQ400 (3456) LOAD DOOR MOUNTING GROUP			