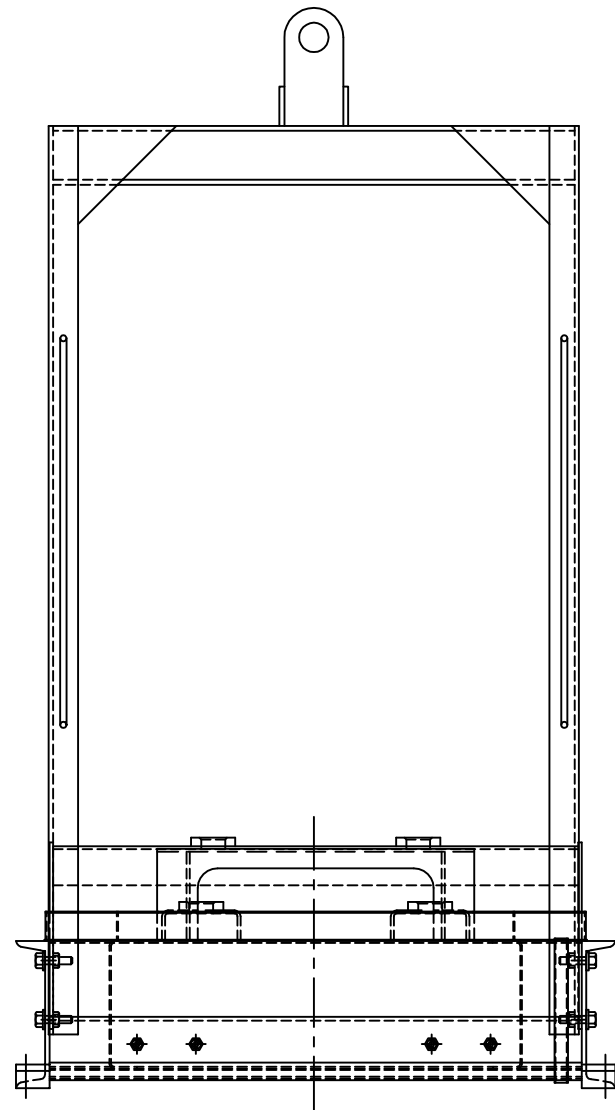
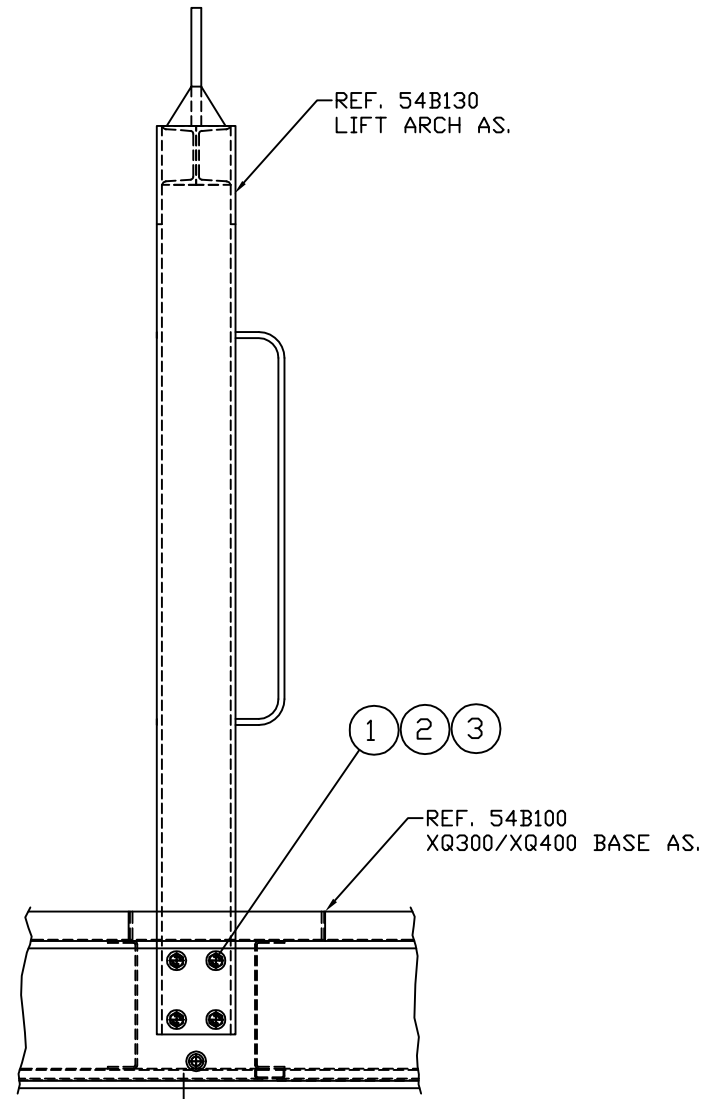


ITEM	QTY.	PART NUMBER	DESCRIPTION
1	8	8T-4994	WASHER-HARD (3/4")
2	8	1A-8063	BOLT (3/4"-10 X 2.50")
3	8	3B-4512	WASHER-LOCK (3/4")



NOTE: LEAVE BOLTS LOOSE
UNTIL TIGHTENING IN
ENCLOSURE MTG GP.

		ALTORFER		ALTORFER POWER SYSTEMS	
		6315 W. FAUBER RD. BARTONVILLE, IL 61607		PHONE (309) 697-1234 FAX (309) 282-7546	
THIS DOCUMENT CONTAINS PROPRIETARY INFORMATION OF ALTORFER, INC. WITHOUT THE WRITTEN PERMISSION OF ALTORFER, INC., ANY COPYING OR OTHER USE EXCEPT THAT FOR WHICH IT WAS INTENDED IS PROHIBITED					
CHANGE NOTICE	ALL DIMENSIONS IN INCHES UNLESS OTHERWISE SPECIFIED		FILE DF\54A	PROJECT REFERENCE XQ400RM 3456 RENTAL UNIT	
	TOLERANCES: X.X ± 0.100 X.XX ± 0.060 X.XXX ± 0.005	THIRD ANGLE PROJECTION	SCALE/SHEET SIZE 1=10/D	DRAWN BY D. ROLING	QUOTE NUMBER -
	ANGULAR ± 1°		SHEET 1 OF 1	DATE 10/21/2015	WORK ORDER NUMBER -
	TITLE XQ400RM 3456 LIFT ARCH MOUNTING GROUP				DRAWING NUMBER 54A103-RM
2	1	NO.			