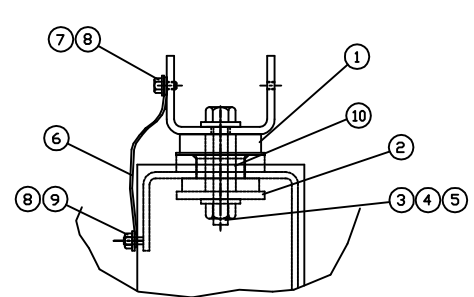
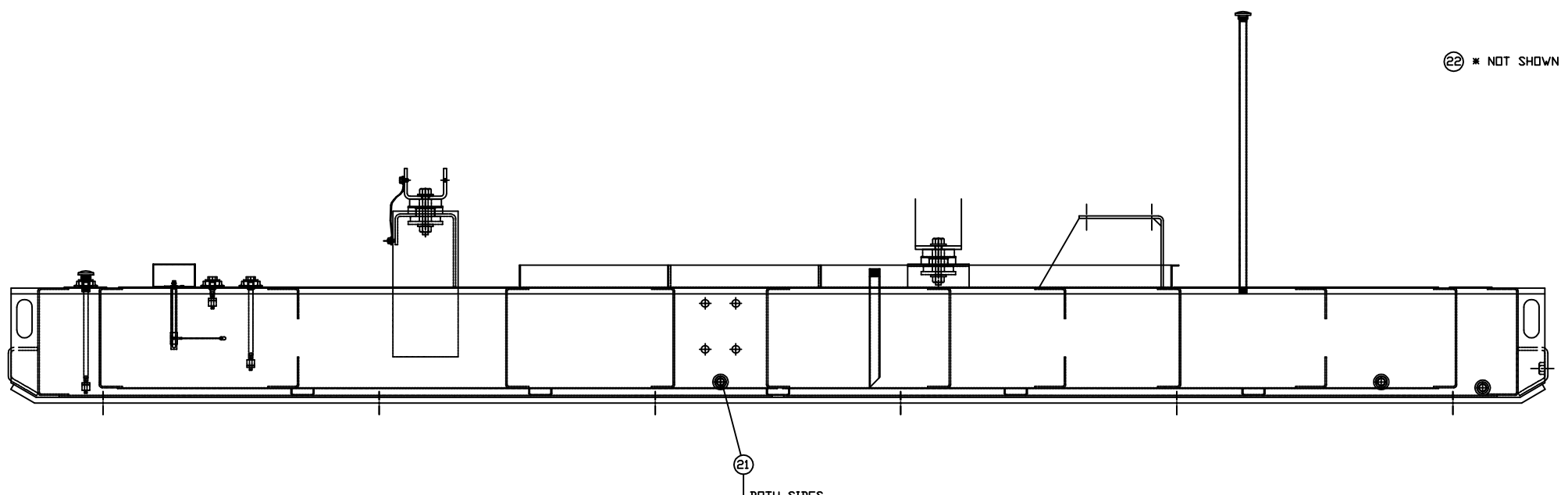
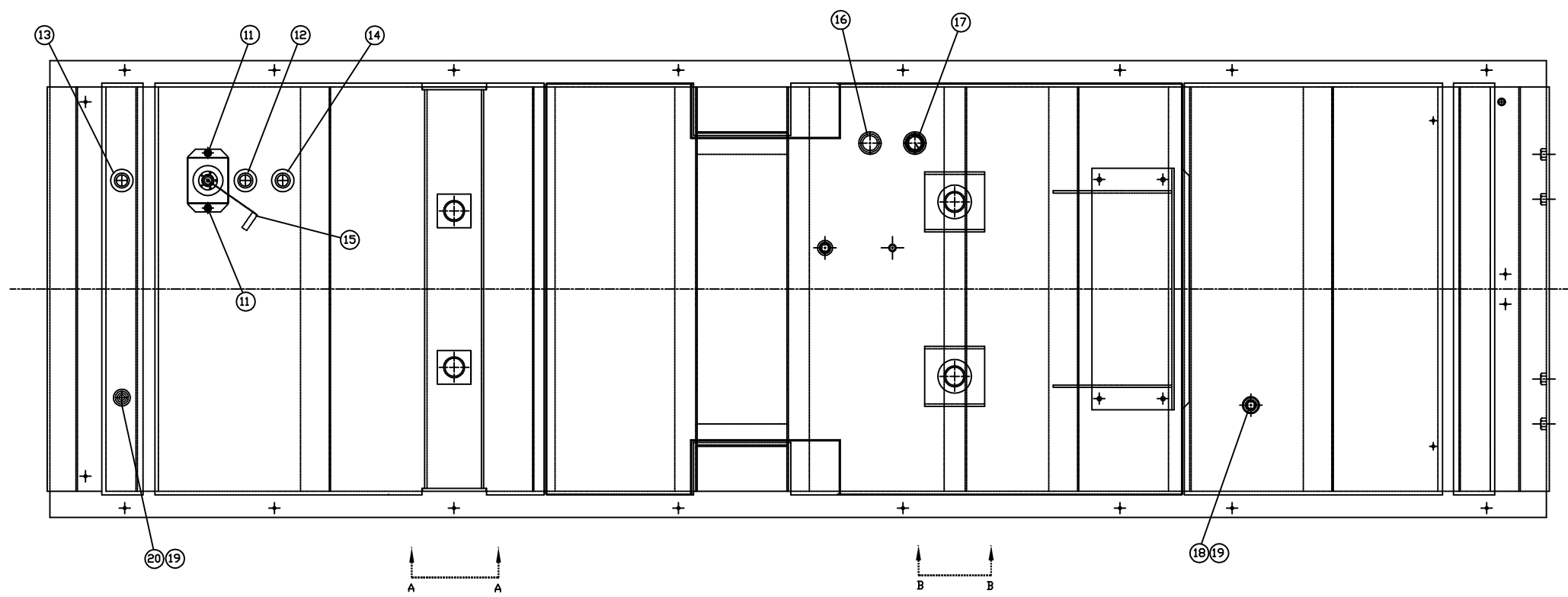
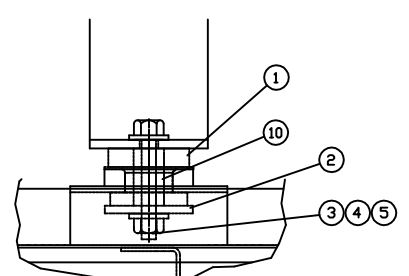


ITEM	QTY.	PART NUMBER	DESCRIPTION
1	4	9W-9930	MOUNT ASSEMBLY
2	4	9W-6584	WASHER-STD (3/4"ID X 4-1/2"OD)
3	4	7X-0375	BOLT (3/4"-10 X 5")
4	8	8T-4994	WASHER - HARD (3/4")
5	4	6V-8182	NUT (3/4"-10)
6	1	034-3665	STRAP
7	1	9B-7237	BOLT (3/8"-16 X 1.25")
8	2	8T-4896	WASHER - HARD (3/8")
9	1	6V-8801	NUT (3/8"-16)
10	4	9W-6582	SLEEVE
11	2	198-2970	NUT-FLANGE (3/8"-16)
12	1	52E103	HIGH FUEL LEVEL SWITCH
13	1	51E102	RUPTURE BASIN SWITCH
14	1	51E101	LOW FUEL LEVEL SWITCH
15	1	54E115	FUEL LEVEL SENDER
16	1	4906K11	CAP-VENT (LOCKABLE-2")
17	1	GAUGE 12	GAUGE-FUEL (12")
18	2	F34TV	VENT (MUSHROOM) 3/4"
19	1	PNPL3435	NIPPLE-PIPE (3/4" X 35")
20	1	8718	NIPPLE-PIPE (3/4" X 2")
21	2	4921K18	DRAIN COCK (BRASS)
22	1	FLUSH TANK	FLUSH/REPAINT XQ TANK



VIEW A-A
SCALE=2



VIEW B-B
SCALE=2

DATE BY		ALTORFER POWER SYSTEMS 6315 W. FAUBER RD. PHONE (309) 697-1234 BARTONVILLE, IL 61607 FAX (309) 282-7546	
CHANGE NOTICE	ALL DIMENSIONS IN INCHES UNLESS OTHERWISE SPECIFIED	FILE DF\54A	PROJECT REFERENCE XQ400RM 3456 RENTAL UNIT
	TOLERANCES: X.X ± 0.100 X.XX ± 0.060 X.XXX ± 0.005	THIRD ANGLE PROJECTION	SCALE/SHEET SIZE 1=10/D
	ANGULAR ± 1°		SHEET 1 OF 1
	TITLE	DRAWN BY D. ROLING	
2	1	NO.	DATE 10/20/2015
XQ400RM (3456) BASE MOUNTING GROUP			QUOTE NUMBER -
			WORK ORDER NUMBER -
			DRAWING NUMBER 54A102-RM