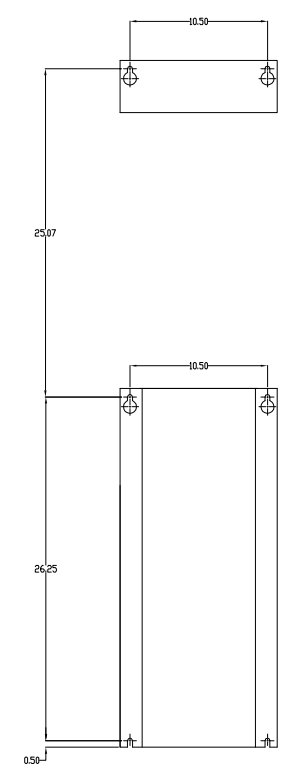
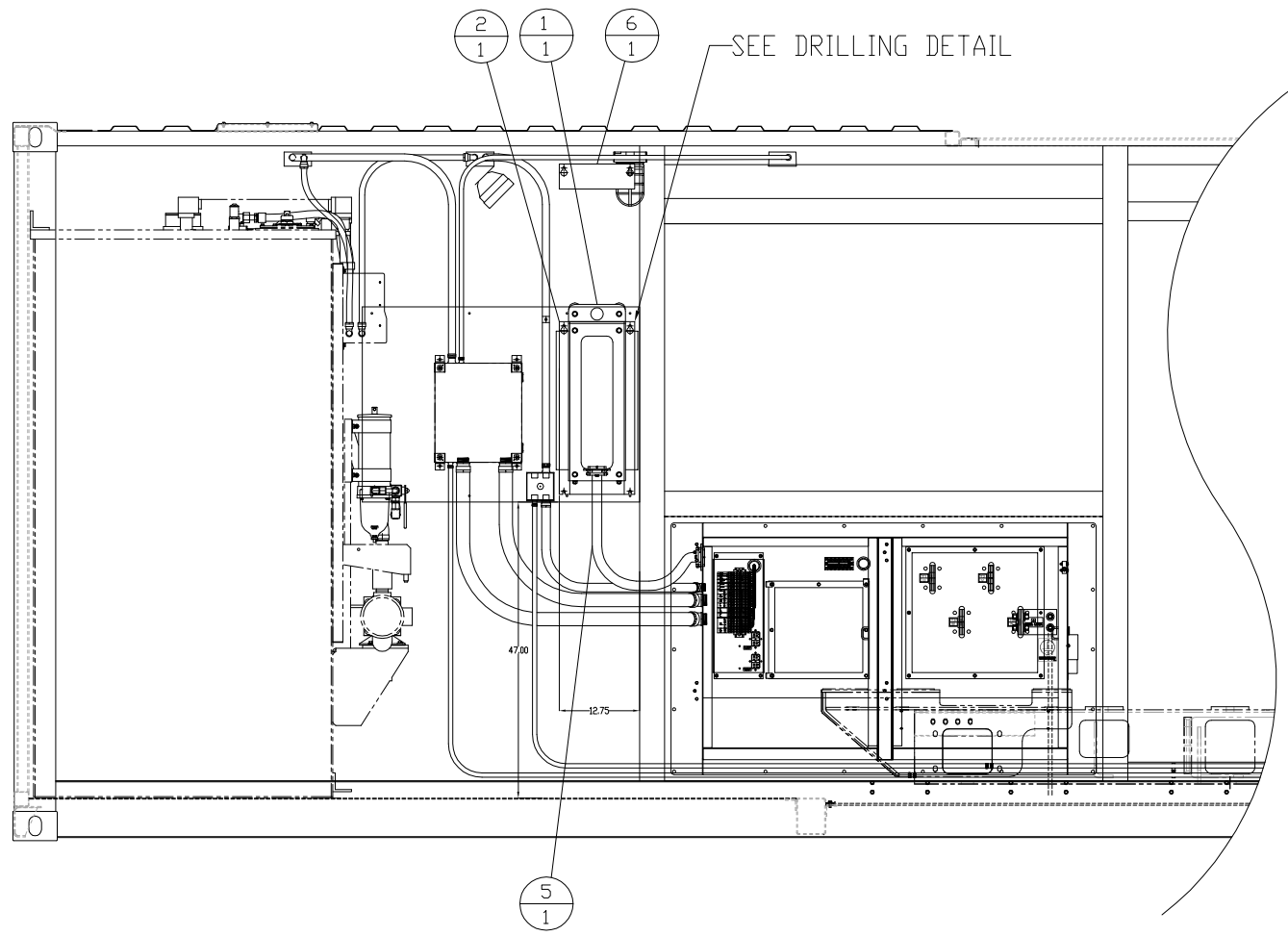
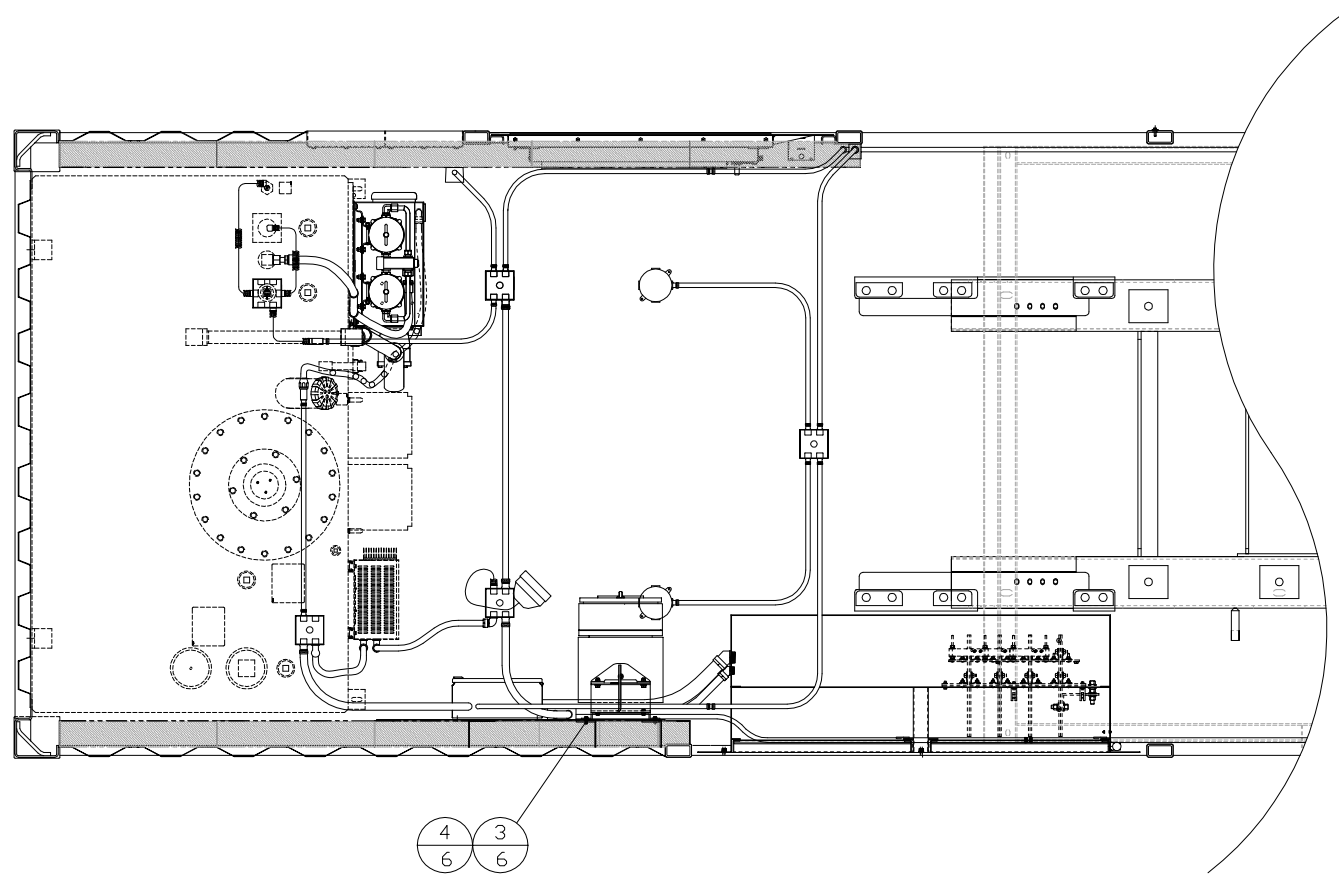


ITEM	QTY.	DESCRIPTION	
1	1	86E180	MTG GP - UMR
2	1	88E137	UMR MOUNT ADAPTOR
3	6	338-3669	BOLT-FLANGE M10
4	6	139-3176	NUTSERT M10
5	1	57E323	HARNESS AS. - UMR UMBILICAL
6	1	88E153	UMR LIFT BRACKET



DRILLING DETAIL

3/23/14 DATE	BY	<b>ALTORFER</b>		<b>ALTORFER POWER SYSTEMS</b>	
		6315 W. FAUBER RD. BARTONVILLE, IL 61607		PHONE (309) 697-1234 FAX (309) 282-7546	
NEW CIRCUIT GP & MOUNT PLATE	CHANGE NOTICE	THIS DOCUMENT CONTAINS PROPRIETARY INFORMATION OF ALTORFER, INC. WITHOUT THE WRITTEN PERMISSION OF ALTORFER, INC., ANY COPYING OR OTHER USE EXCEPT THAT FOR WHICH IT WAS INTENDED IS PROHIBITED		FILE	PROJECT REFERENCE
		DF\88A	APS2000	SCALE/SHEET SIZE	QUOTE NUMBER
1	1	ALL DIMENSIONS IN INCHES UNLESS OTHERWISE SPECIFIED	TOLERANCES: X.X ± 0.100 X.XX ± 0.050 X.XXX ± 0.005	THIRD ANGLE PROJECTION	D. RICHARDSON
1	1	ANGULAR ± 1°	1 OF 1	DATE	WORK ORDER NUMBER
TITLE		UMR MOUNTING & CONNECTION GROUP		2/8/2013	0
				DRAWING NUMBER	88A123-01