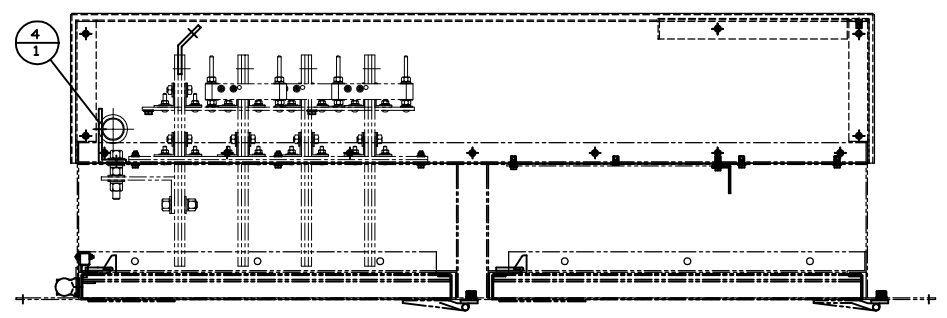
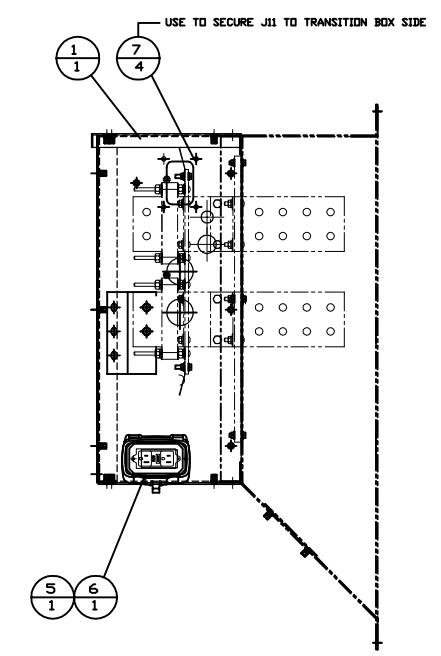
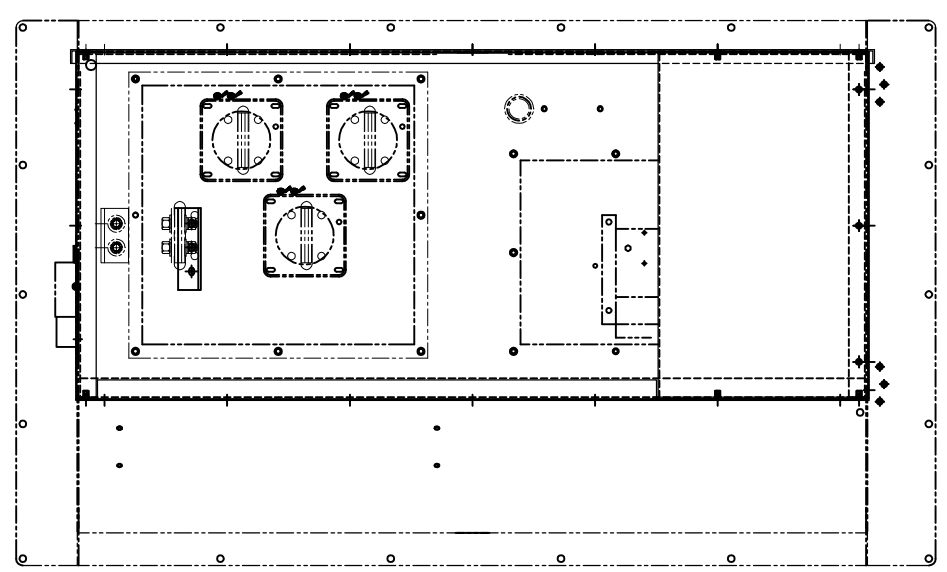
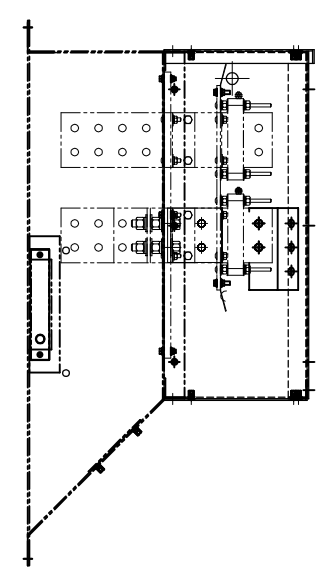
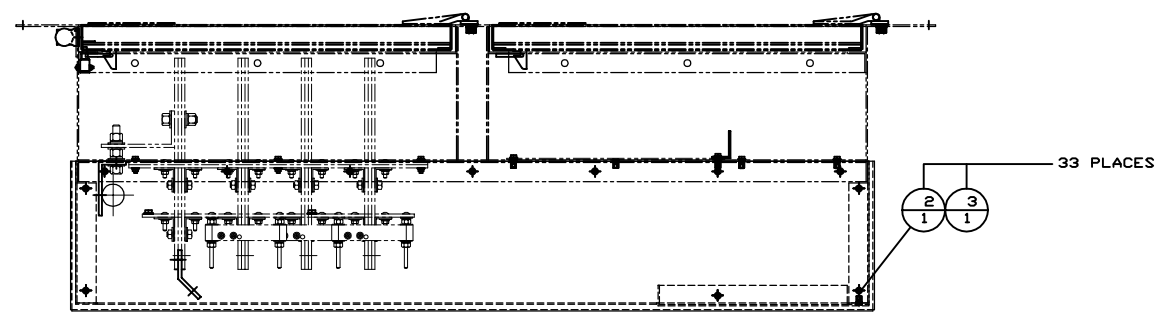


ITEM	QTY.	P/N	DESCRIPTION
1	1	88E119-02	TRANSITION BOX GROUP
2	33	4M-5281	BOLT 1/4x20 - 3/4 Lg
3	33	8T-4205	WASHER - FLAT
4	1	4D-3100	GROMMET
5	1	WP1000HC	COVER - RECEPTACLE
6	1	7899-W	RECEPTACLE
7	4	254-4451	BOLT - FLANGE



2/18/2014 DKR	3/5/2013 DKR	DATE	ALTORFER		ALTORFER POWER SYSTEMS	
ADD CONDUIT HOLE FOR PL421 ANTENNAE		PROTOTYPE UPDATE	6315 W. FAUBER RD. BARTONVILLE, IL 61607		PHONE (309) 697-1234 FAX (309) 282-7546	
CHANGE NOTICE	NO.	DATE	THIS DOCUMENT CONTAINS PROPRIETARY INFORMATION OF ALTORFER, INC. WITHOUT THE WRITTEN PERMISSION OF ALTORFER, INC., ANY COPYING OR OTHER USE EXCEPT THAT FOR WHICH IT WAS INTENDED IS PROHIBITED		PROJECT REFERENCE	
ALL DIMENSIONS IN INCHES UNLESS OTHERWISE SPECIFIED	FILE	DF/88A	SCALE/SHEET SIZE		DRAWN BY	
TOLERANCES: X.X ± 0.100 X.XX ± 0.060 X.XXX ± 0.005	THIRD ANGLE PROJECTION	1=10/C	SHEET		DATE	
ANGULAR ± 1°	1 OF 1	2/6/2013	D. RICHARDSON		QUOTE NUMBER	
TITLE			TRANSITION BOX INSTALLATION GROUP		WORK ORDER NUMBER	
			88A121-02		DRAWING NUMBER	
					0	
					0	
					88A121-02	