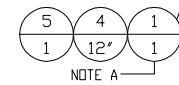
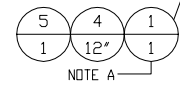
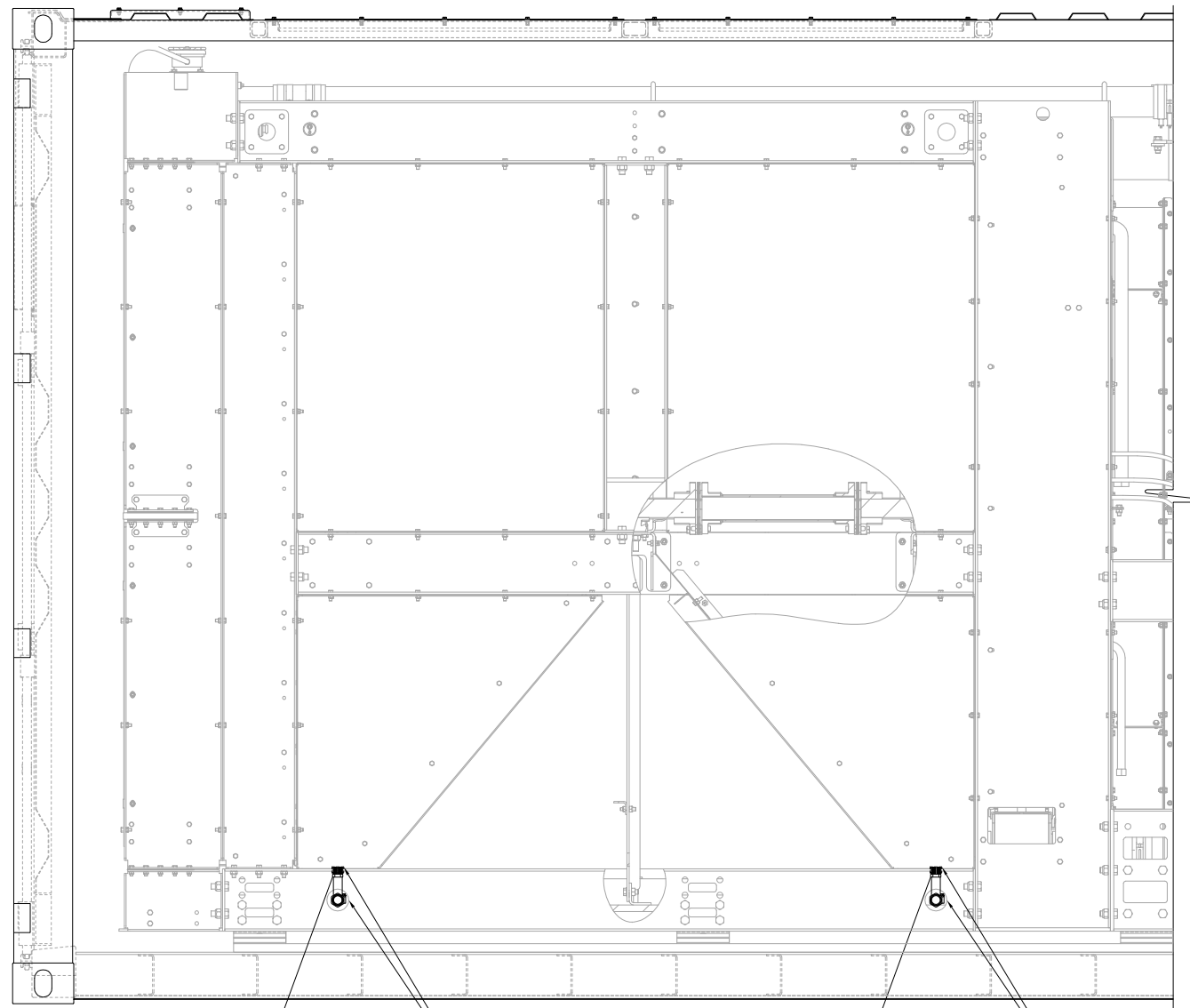


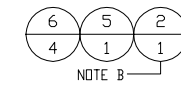
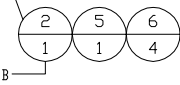
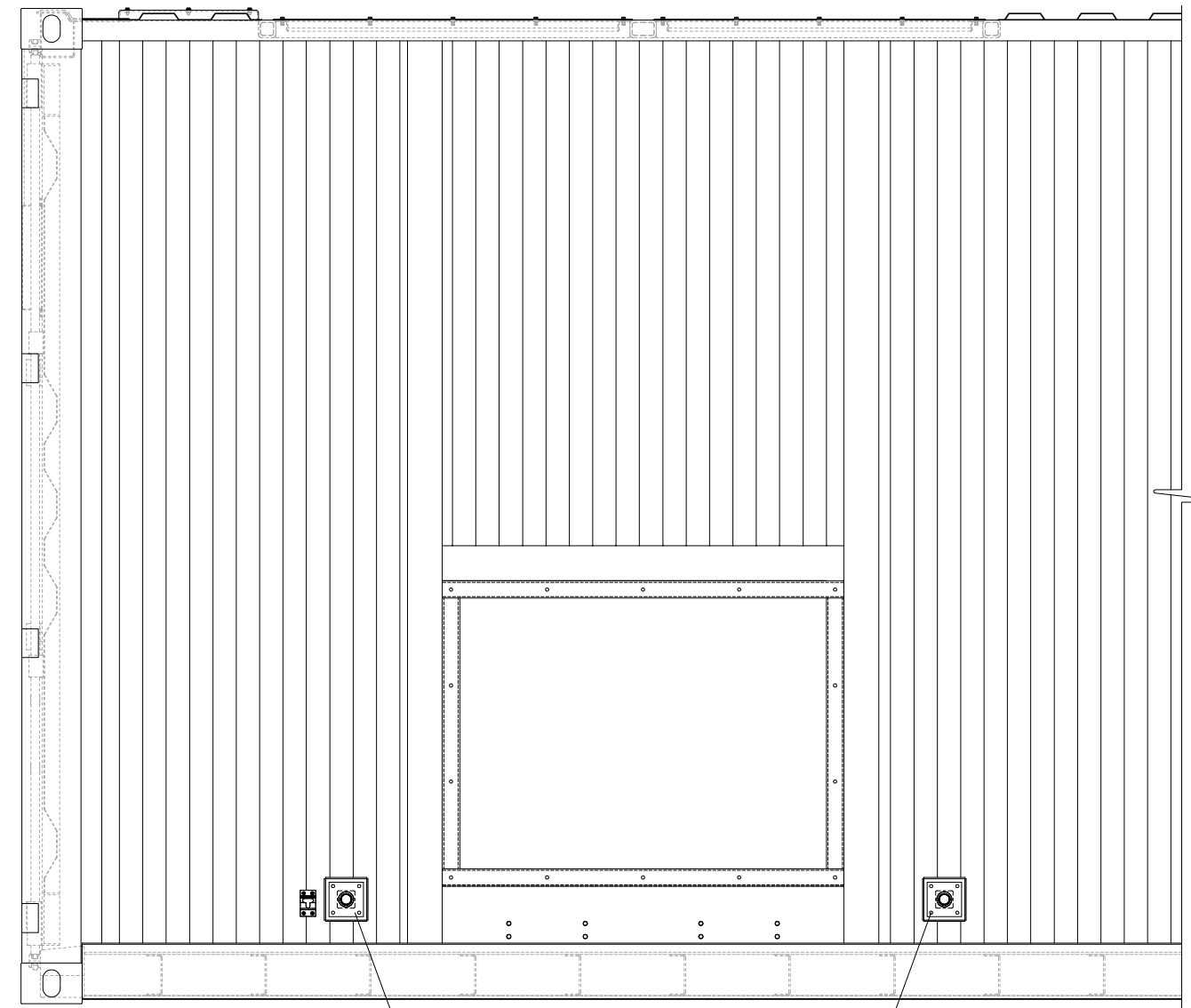
| ITEM | QTY. | P/N | DESCRIPTION |
|------|-------|----------|--------------------------------------|
| 1 | 4 | 9431K34 | BRONZE BARBED HOSE FITTING-90° ELBOW |
| 2 | 4 | 9431K14 | BRONZE BARBED HOSE FITTING-STRAIGHT |
| 3 | 4 | 88C173 | DRAINS COVER PLATE |
| 4 | 122CM | 5P-1251 | HOSE BULK-1" I.D. (48.00') |
| 5 | 8 | 9M-7958 | CLAMP-HOSE |
| 6 | 16 | 235-4451 | BOLT-M6X1 |



REF. 1" NPT HALF COUPLING INSIDE TURN DUCT.
CONNECT ELBOW FROM BOTTOM SIDE AND ROUTE HOSE THROUGH HOLE PROVIDED.

REF. 1" NPT HALF COUPLING INSIDE TURN DUCT.
CONNECT ELBOW FROM BOTTOM SIDE AND ROUTE HOSE THROUGH HOLE PROVIDED.

CURBSIDE PARTIAL SIDE VIEW (WALLS REMOVED FOR CLARITY)



NOTE B

NOTE B

CURBSIDE PARTIAL SIDE VIEW

NOTE A: STREETSIDE DIVERTER DRAINS (NOT SHOWN) SHALL BE INSTALLED WITH THE SAME METHOD AS CURBSIDE DIVERTER DRAINS SINCE THE DESIGN IS SYMMETRICAL.
NOTE B: INSTALL STRAIGHT NIPPLE BARB (ITEM#2) TO HALF COUPLING IN DRAIN COVER PLATE.
NOTE C: INSTALL THREAD SEALANT ON ALL THREADED CONNECTIONS

| | | | |
|--|---|--|------------------------------|
| | | ALTORFER POWER SYSTEMS 6315 W. FAUBER RD. PHONE (309) 697-1234 BARTONVILLE, IL 61607 FAX (309) 282-7546 | |
| | | THIS DOCUMENT CONTAINS PROPRIETARY INFORMATION OF ALTORFER, INC. WITHOUT THE WRITTEN PERMISSION OF ALTORFER, INC., ANY COPYING OR OTHER USE EXCEPT THAT FOR WHICH IT WAS INTENDED IS PROHIBITED. | |
| CHANGE NOTICE TOLERANCES: X.X ± 0.100 X.XX ± 0.060 X.XXX ± 0.005 ANGULAR ± 1° | ALL DIMENSIONS IN INCHES UNLESS OTHERWISE SPECIFIED | FILE DF/88A | PROJECT REFERENCE APS2000 |
| | SCALE/SHEET SIZE 1=10/D | DRAWN BY JAM | QUOTE NUMBER - |
| | SHEET 1 OF 1 | DATE 05-16-13 | WORK ORDER NUMBER - |
| | TITLE DIVERTER DRAINS MOUNTING GROUP | | |