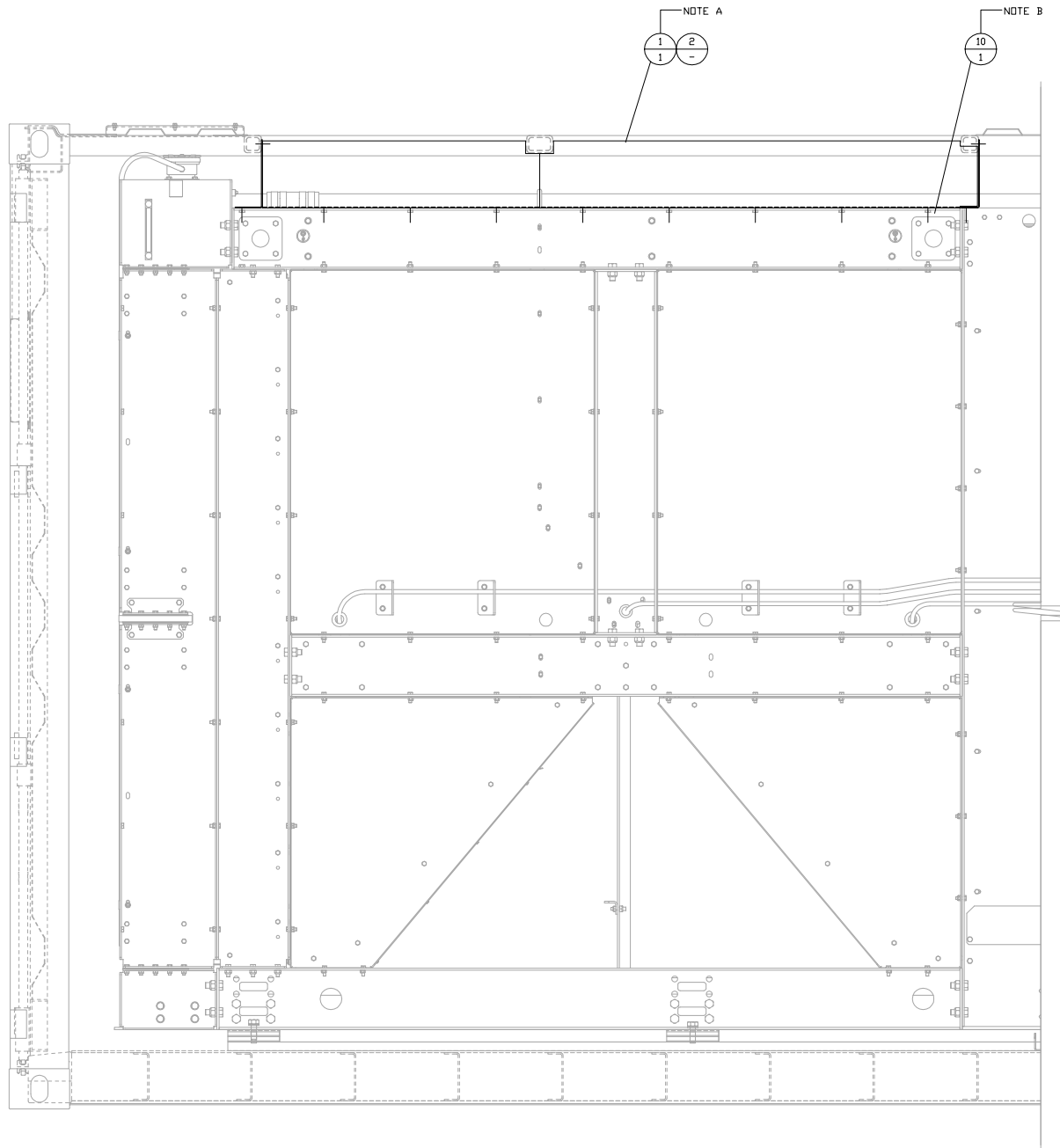
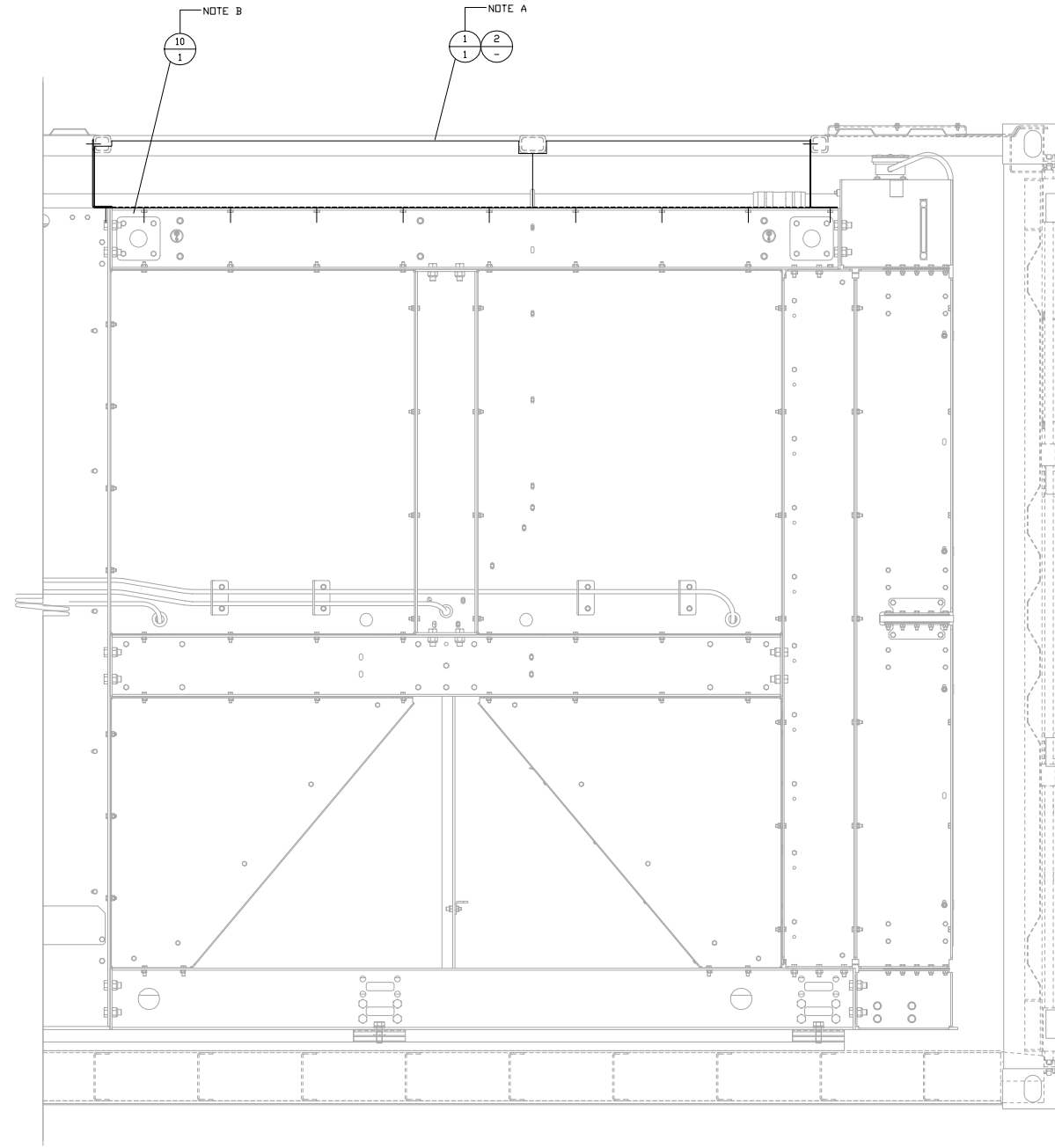


ITEM	QTY.	P/N	DESCRIPTION
1	1	88C146	DIVERTER SIDE FLASHING GROUP
2	1	88C149	DIVERTER FLASHING GROUP-JWH & CAC
3	30	317-5700-1/4"	NEOPRENE WASHER
4	30	96024A430-1/4"-20	THREAD CUTTING BOLT-HEX HEAD
5	26	8T-4908-M8X1.25	BOLT
6	26	377-4313	NEOPRENE WASHER
7	1	DSILICONE CAULK-SILICONE SEALANT-CLEAR	
8	1	0221243-SIKAFLEX SEALANT-BLACK	
9	1	8S-7583	GROMMET
10	2	88C223	LIFT-EYE FLASHING



CURBSIDE VIEW (WALLS REMOVED FOR CLARITY)



STREETSIDE VIEW (WALLS REMOVED FOR CLARITY)

NOTE A: APPLY CLEAR SILICONE SEALANT AT ALL ALUMINUM FLASHING SEAMS.  
 NOTE B: INSTALL 88C223 FROM INSIDE TURN DUCT TO COVER LIFT-EYE HOLE NEAR CAC CORE.

11-25-13 JAN	10-14-14 JAN	08-14-14 JAN	07-03-13 JAN	DATE BY	<b>ALTORFER POWER SYSTEMS</b> 6315 W. FAUBER RD. PHONE (309) 697-1234 BARTONVILLE, IL 61607 FAX (309) 282-7546
4	3	2	1	REV.	
ITEMS #2 & #5 & #6	ITEM #10 ADDED	ITEMS #1 & #9	REDESIGN	CHANGE NOTICE	THIS DOCUMENT CONTAINS PROPRIETARY INFORMATION OF ALTORFER, INC. WITHOUT THE WRITTEN PERMISSION OF ALTORFER, INC., ANY COPYING OR OTHER USE EXCEPT THAT FOR WHICH IT WAS INTENDED IS PROHIBITED.  ALL DIMENSIONS IN INCHES UNLESS OTHERWISE SPECIFIED  TOLERANCES: .XX ± 0.100 X.XX ± 0.060 XXX ± 0.005 ANGULAR ± 1°
FILE	PROJECT REFERENCE	DRAWN BY	QUOTE NUMBER		
DF/88A	APS2000	JAM	-		
SCALE/SHEET SIZE 1=10/D	DATE	WORK ORDER NUMBER			
THIRD ANGLE PROJECTION	1 OF 1	05-14-13	-		
SHEET	TITLE	DRAWING NUMBER			
	DIVERTER FLASHING GROUP	88A111-4			