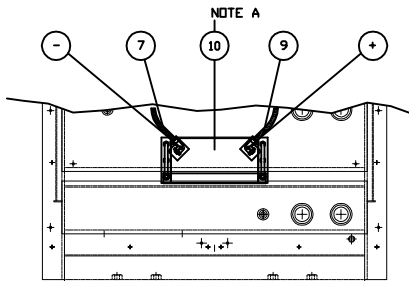
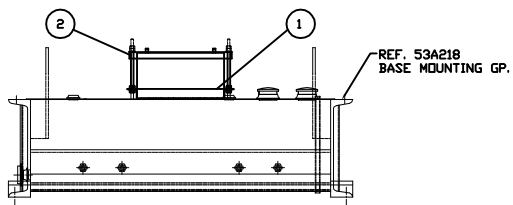


INCH 49A110

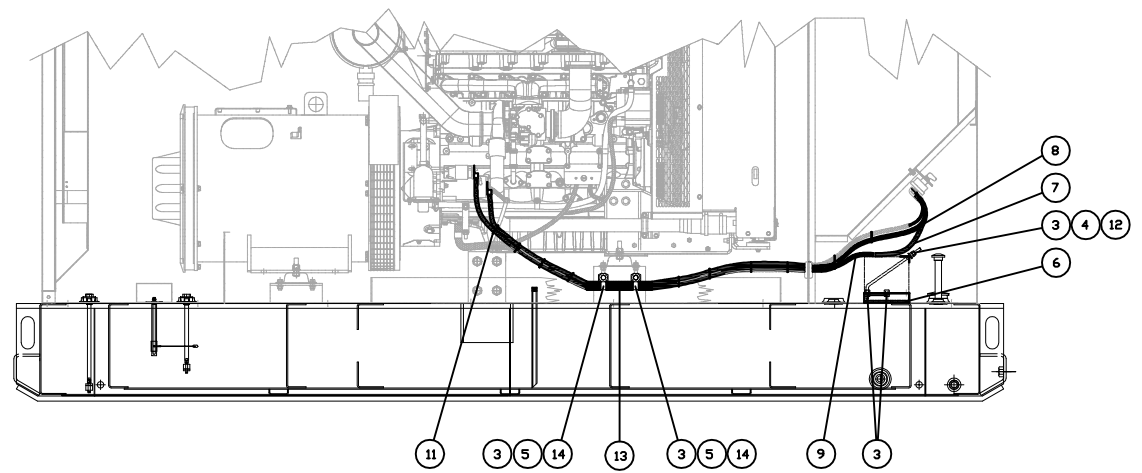
COMP	QTY	DESCRIPTION	WEIGHT
1	1	49C155 - BATTERY BASE	4
2	1	49C156 - BATTERY TIE DOWN	1
3	13	198-2970 - 3/8" WHIZLOCK NUT	-
4	2	8T-4896 - 3/8" FLAT WASHER	-
5	2	4S-4455 - VINYL CLAMP 1-1/2"	-
6	1	BB12 - BATTERY BOARD 6" x 12"	1
7	1	49E106 - BN1 CABLE ASSEMBLY	1
8	1	49E107 - BN2 CABLE ASSEMBLY	7
9	1	49E108 - BP1 CABLE ASSEMBLY	6
10	1	11S-2421 - 12V BATTERY	40
11	10	3S-2093 - WHITE CABLE TIE	-
12	2	HRACK ROD - 3/8"-16 THREADED ROD 14' Lg.	1
13	1	5N-8359 - 1" WIRE LOOM 12' Lg.	-
14	2	345-8531 - 3/8-16NCx1 WHIZLOCK BOLT	-
TOTAL			61



TOP VIEW



FRONT VIEW



SIDE VIEW

NOTE A: CAT 1152421 BATTERY SUPPLIED BY CATERPILLAR QTY. 1

ALTORFER		ALTORFER POWER SYSTEMS	
6315 W. FAUBER RD. BARTONVILLE, IL 61607		PHONE (309) 697-1234 FAX (309) 282-7546	
THIS DOCUMENT CONTAINS PROPRIETARY INFORMATION OF ALTORFER, INC. WITHOUT THE WRITTEN PERMISSION OF ALTORFER, INC. ANY COPYING OR OTHER USE EXCEPT THAT FOR WHICH IT WAS INTENDED IS PROHIBITED.			
CHANGE NOTICE	ALL DIMENSIONS IN INCHES UNLESS OTHERWISE SPECIFIED	FILE DF/49A	PROJECT REFERENCE APS150 RENTAL PACKAGE
	TOLERANCES: X.X ± 0.10 X.XX ± 0.060 X.XXX ± 0.005	THIRD ANGLE PROJECTION	SCALE/SHEET SIZE 1=10/D
	ANGULAR ± 1°	SHEET 1 OF 1	DRAWN BY B. LOHNES
			DATE 01-02-09
TITLE APS150 STARTING BATTERY GROUP			QUOTE NUMBER WORK ORDER NUMBER DRAWING NUMBER 49A110