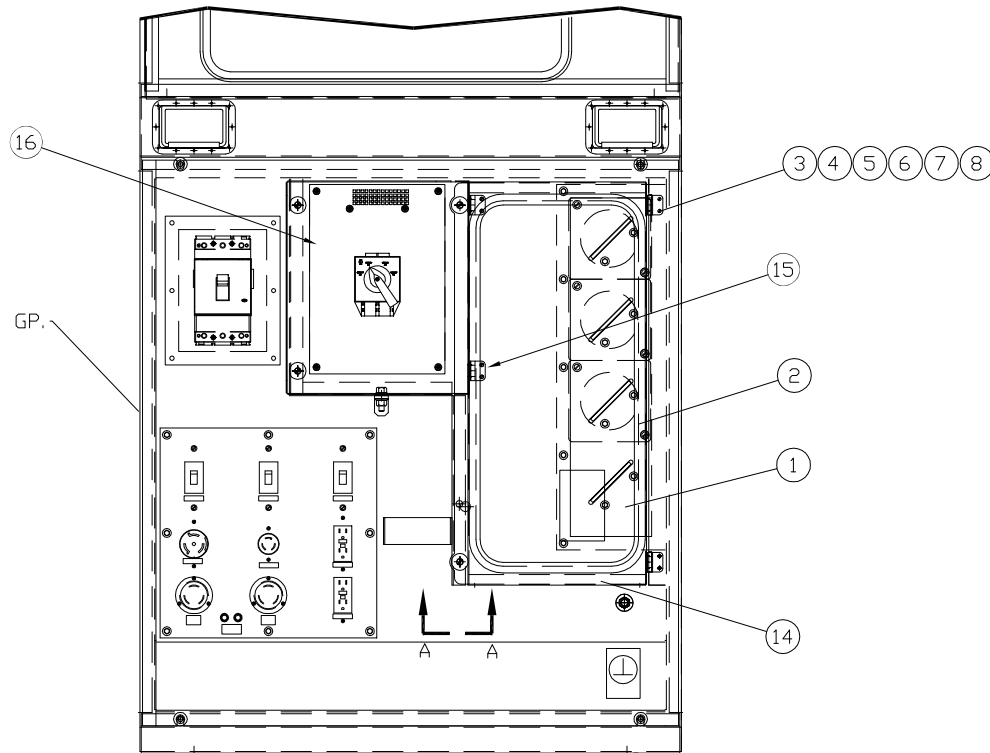


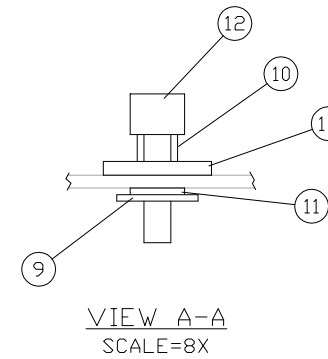
INCH 47A123-01


ITEM	QTY.	PART NO.	DESCRIPTION	WEIGHT
1	1	54C247	LOAD COVER WINDOW	4
2	1	AS990	WINDOW GROMMET- 70" Lg.	1
3	16	33614	#10 LOCK WASHER	1
4	16	36028	#10-24 NUT	-
5	16	33074	#10 FLAT WASHER	-
6	16	72158	#10-24x.75 TAPERED HEAD SCREW	-
7	4	SSHINGE	HINGE	1
8	8	54D148	HINGE - LOAD GASKET	-
9	4	90102A030	SPLIT RETAINING PIN	-
10	4	9435K5	SPRING	-
11	4	95630A445	TEFLON FLAT WASHER	-
12	4	91035A625	THUMB SCREW	-
13	4	317-5700	1/4" NEOPREME BACKED FLAT WASHER	-
14	1	47C459	LOAD COVER DOOR ASSEMBLY	11
15	1	47C460	DOOR CATCH - LOAD DOOR	1
16	1	47C457	COB COVER DOOR ASSEMBLY	7
TOTAL				26

REF. 47A113 DUAL VOLTAGE ENCL. GP.



NOTE:  
ITEMS 14,15,16 PROVIDED IN THE ENCLOSURE KIT (47C500 BM).



2	1	NO.	DATE	BY	 <b>ALTORFER POWER SYSTEMS</b> 6315 W. FAUBER RD.      PHONE (309) 697-1234 BARTONVILLE, IL 61607      FAX (309) 282-7546			
					THIS DOCUMENT CONTAINS PROPRIETARY INFORMATION OF ALTORFER, INC. WITHOUT THE WRITTEN PERMISSION OF ALTORFER, INC., ANY COPYING OR OTHER USE EXCEPT THAT FOR WHICH IT WAS INTENDED IS PROHIBITED			
REVISE FOR PRODUCTION		CHANGE NOTICE		FILE		PROJECT REFERENCE		
ALL DIMENSIONS IN INCHES UNLESS OTHERWISE SPECIFIED		THIRD ANGLE PROJECTION		DF / 47A		APS60/100T4i RENTAL PACKAGE		
TOLERANCES: X.X ± 0.100 X.XX ± 0.060 X.XXX ± 0.005		ANGULAR ± 1°		SCALE/SHEET SIZE 1=10/C SHEET 1 OF 1		DRAWN BY D. ROLING DATE 07/29/2013		
TITLE		APR 20/14		D. ROLING		QUOTE NUMBER -		
APR 20/14		D. ROLING		DATE		WORK ORDER NUMBER -		
APR 20/14		D. ROLING		DATE		DRAWING NUMBER 47A123-01		
APR 20/14		D. ROLING		DATE		DRAWING NUMBER 47A123-01		