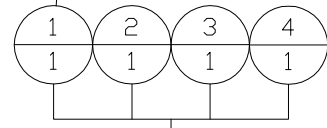
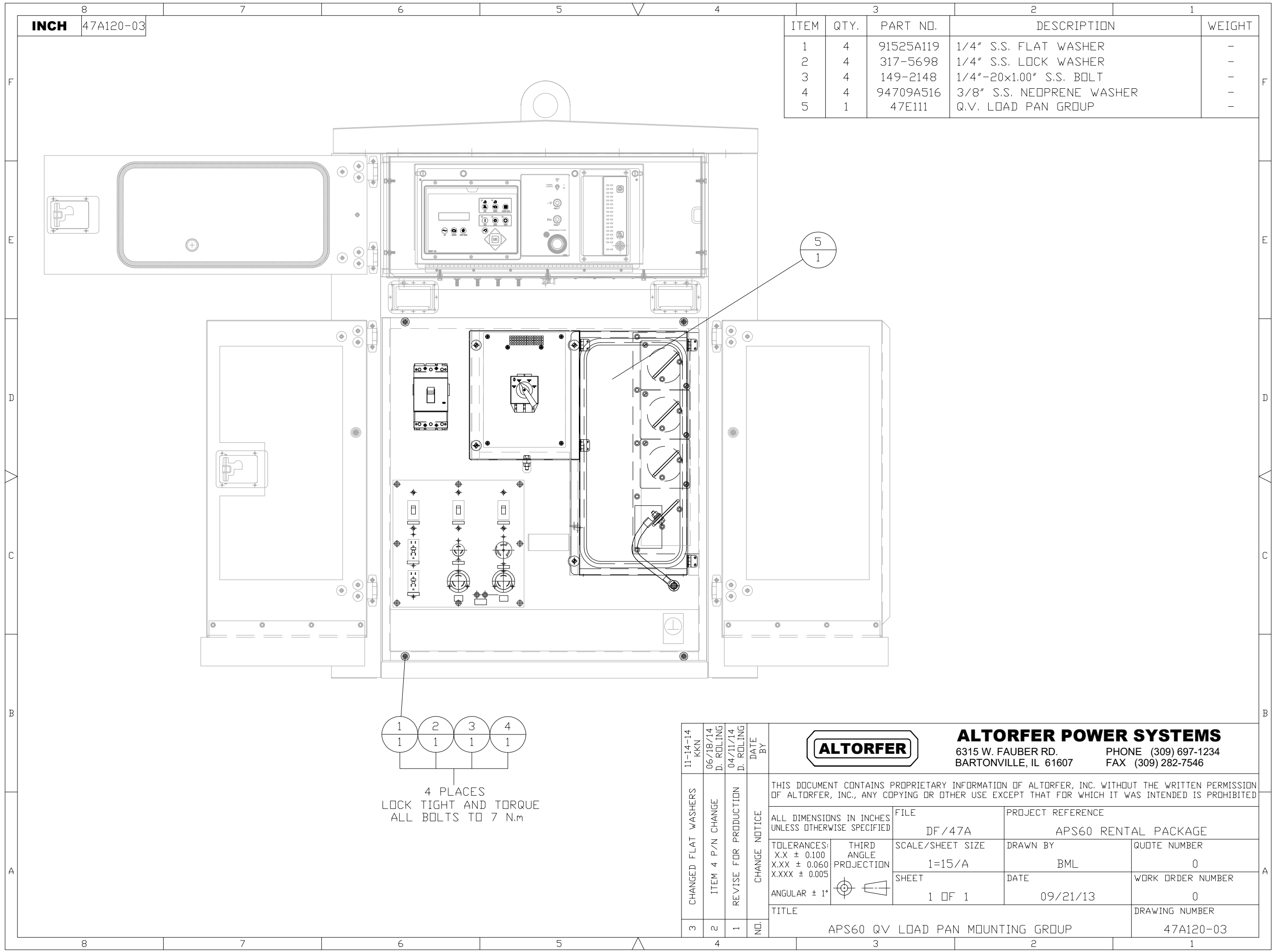


INCH 47A120-03

ITEM	QTY.	PART NO.	DESCRIPTION	WEIGHT
1	4	91525A119	1/4" S.S. FLAT WASHER	-
2	4	317-5698	1/4" S.S. LOCK WASHER	-
3	4	149-2148	1/4"-20x1.00" S.S. BOLT	-
4	4	94709A516	3/8" S.S. NEOPRENE WASHER	-
5	1	47E111	Q.V. LOAD PAN GROUP	-



4 PLACES
LOCK TIGHT AND TORQUE
ALL BOLTS TO 7 N.m

11-14-14 KKN	06/18/14 D. ROLING	04/11/14 D. ROLING	DATE BY		ALTORFER POWER SYSTEMS 6315 W. FAUBER RD. PHONE (309) 697-1234 BARTONVILLE, IL 61607 FAX (309) 282-7546			
CHANGED FLAT WASHERS	ITEM 4 P/N CHANGE	REVISE FOR PRODUCTION	CHANGE NOTICE		THIS DOCUMENT CONTAINS PROPRIETARY INFORMATION OF ALTORFER, INC. WITHOUT THE WRITTEN PERMISSION OF ALTORFER, INC., ANY COPYING OR OTHER USE EXCEPT THAT FOR WHICH IT WAS INTENDED IS PROHIBITED			
3	2	1	NO.	ALL DIMENSIONS IN INCHES UNLESS OTHERWISE SPECIFIED TOLERANCES: X.X ± 0.100 X.XX ± 0.060 X.XXX ± 0.005 ANGULAR ± 1°	FILE DF/47A SCALE/SHEET SIZE 1=15/A SHEET 1 OF 1	PROJECT REFERENCE APS60 RENTAL PACKAGE DRAWN BY BML DATE 09/21/13		QUOTE NUMBER 0 WORK ORDER NUMBER 0 DRAWING NUMBER 47A120-03
				TITLE APS60 QV LOAD PAN MOUNTING GROUP				