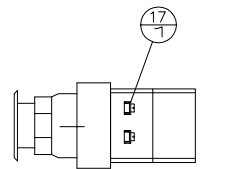
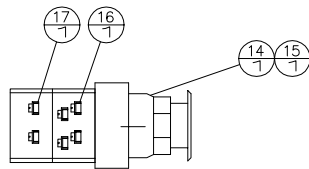


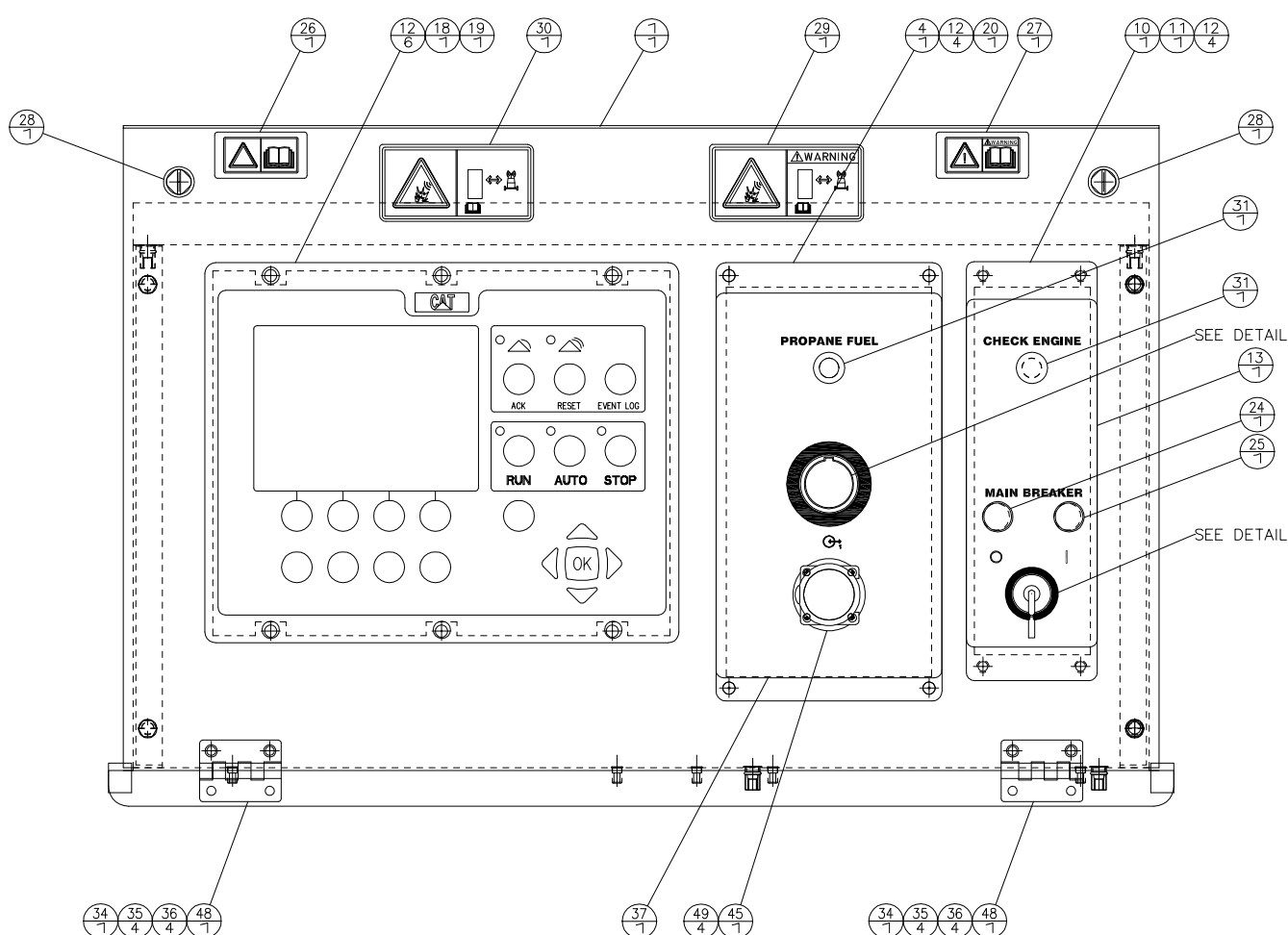
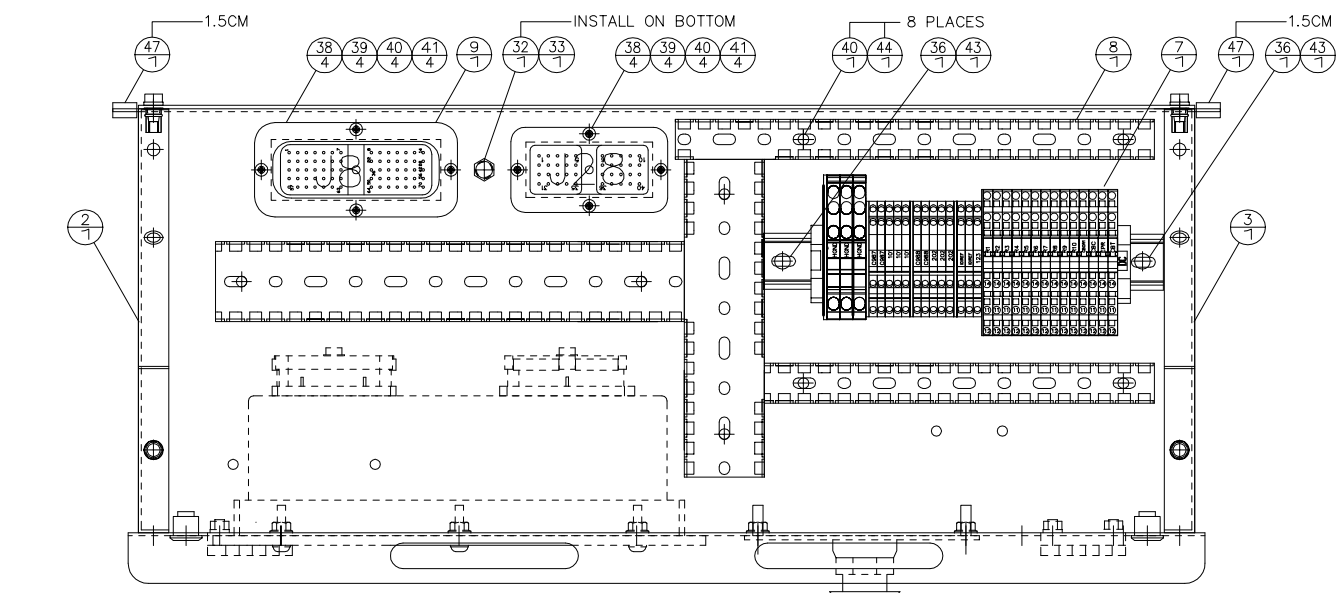
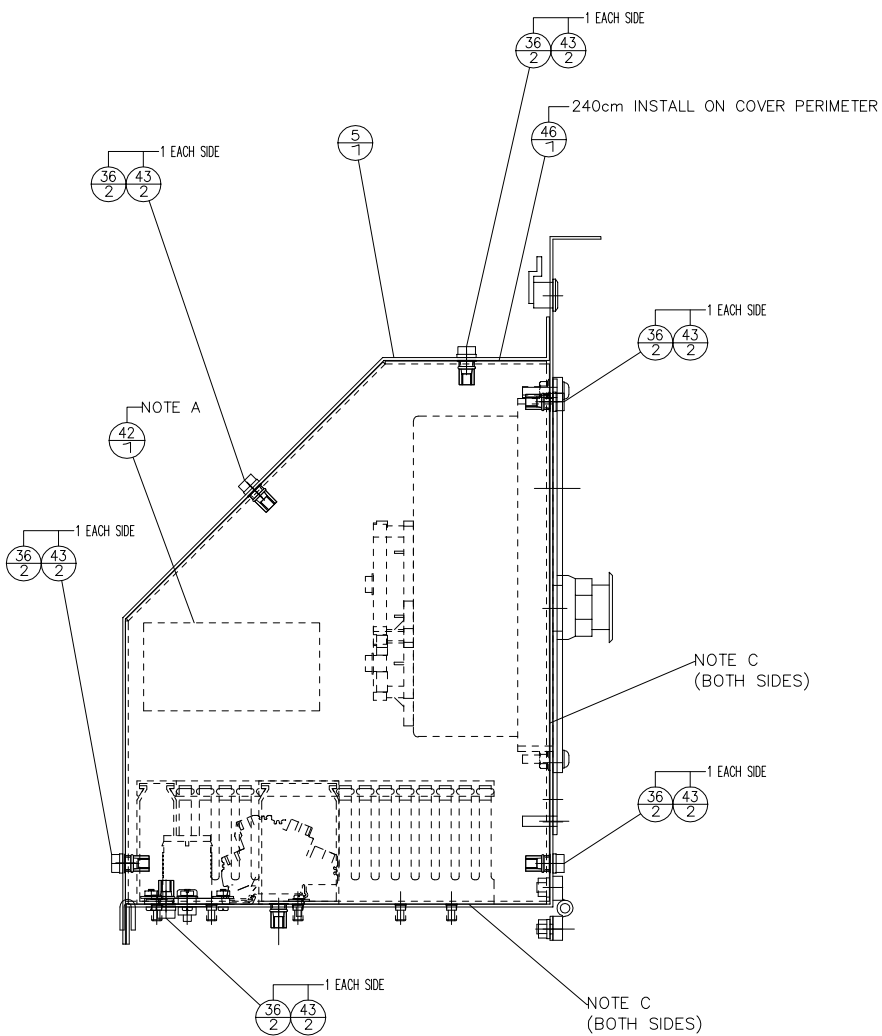
CBS	CBCL	CBOL	GND	JR	J28	TS2
GSC	LPSL	ESPB	CEL	PSL		



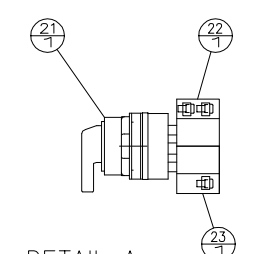
DETAIL B
RIGHT HAND SIDE



DETAIL B
LEFT HAND SIDE



NO	ITEM	QTY	MEAS UNIT	CAT PART NO.	ALTORFER PART NO.	NAME
PARTS LIST						
1	1			68E302		PANEL AS. - BOX
2	1			68E397		PANEL AS. - LEFT SIDE
3	1			68E398		PANEL AS. - RIGHT SIDE
4	1			68E305		PLATE - INSTRUMENT
5	1			68E303		PANEL AS. - COVER
6	1			68E307		FILM - IDENT
7	1			71E132		BLOCK AS.
8	1			68E399		WIRE DUCT GP
9	1			71E131		WIRING GP. - CONTROL
10	1			444-1223	68E112	PLATE AS.
11	1			7C-2954		GASKET - MODULE
12	14			243-5027		NUT - M6X1
13	1			444-1225	68E114	FILM - INFORMATION
14	1			109-6507		SWITCH - OPERATOR
15	1			124-3176		COVER
16	1			111-1325		BLOCK - CONTACT
17	2			111-1324		BLOCK - CONTACT
18	1			450-9619		CONTROL GP -B
19	1			103-6272		SEAL - CONTROL
20	1			244-9613		GASKET - ALARM
21	1			444-1226	9001-KS702B	SWITCH - OPERATOR
22	1				9001-KA-1	BLOCK - CONTACT
23	1				9001-KA-2	BLOCK - CONTACT
24	1			337-5438		LAMP AS. - INDICATOR
25	1			337-5437		LAMP AS. - INDICATOR
26	1			222-7945		FILM-WARNING
27	1			228-3581		FILM - WARN
28	2			125-0171		LOCK AS.
29	1			230-1340		FILM - WARN LINK
30	1			230-1341		FILM - WARN LINK
31	2			250-2298		LAMP - AMBER
32	1			211-0089		NUT - HEX FLANGE
33	1			4B-1256		SCREW - MACHINE
34	2			169-4481		HINGE AS.
35	8			5C-2890		NUT-HEX M6X1
36	22			9X-8256		WASHER
37	1				68E330	FILM - IDENTIFICATION
38	8			4B-2041		NUT
39	8			9X-6259		SCREW - MACHINE
40	16			4B-4274		WASHER - HARD
41	8			3L-8187		LOCKWASHER #6
A 42	1			9Y-9771		FILM - IDENTIFICATION
43	14			8T-4138		BOLT M6X1-20 Lg
44	8			293-2033		SCREW-MACHINE M4x0.7-10Lg
45	1			132-8488		NUT - RING #4-40
46	240	CM		244-9631		SEAL - BULK
47	3	CM		3E-6600		SEAL - BULK
48	2				68E426	SPACER - HINGE
49	4			293-2033		SCREW-MACHINE #4-40



DETAIL A
TOP MOUNTED ITEM 22 OPERATES
WHEN KNOB IS TURNED COUNTER-CLOCKWISE
BOTTOM MOUNTED ITEM 23 OPERATES
WHEN KNOB IS TURNED CLOCKWISE
(CBS)

FOR USE WITH:
APS470G
APS290G
APS230G

NOTE A: PLACE FILM ON INTERIOR SURFACE OF SIDE COVER
NOTE C: CLEAR SILICONE SEALANT REQUIRED IN EXTERIOR SEAMS AS MARKED
NOTE D: THIS PANEL AR. IS A DERIVATIVE OF ALTORFER P/N 68E301

REFERENCE CAT DWG:

		ALTORFER POWER SYSTEMS 6315 W. FAUBER RD. PHONE (309) 697-1234 BARTONVILLE, IL 61607 FAX (309) 262-7546	
CHANGE NOTICE ALL DIMENSIONS IN INCHES UNLESS OTHERWISE SPECIFIED TOLERANCES: X.X ± 0.100 X.XX ± 0.060 X.XXX ± 0.005 ANGULAR ± 1°	FILE DF/71E	PROJECT REFERENCE APS GAS PRODUCT	
	SCALE/SHEET SIZE 1=60/D	DRAWN BY D. RICHARDSON	QUOTE NUMBER
	SHEET 1 OF 1	DATE 12/30/15	WORK ORDER NUMBER
	TITLE PANEL AR. - ELEC	DRAWING NUMBER 71E130	