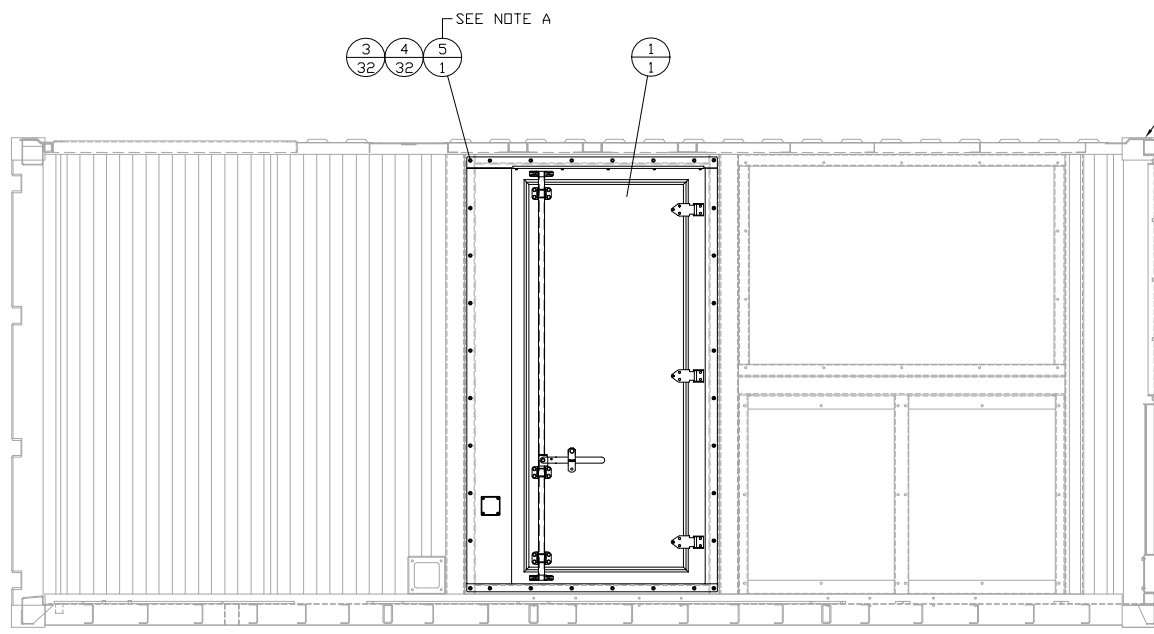
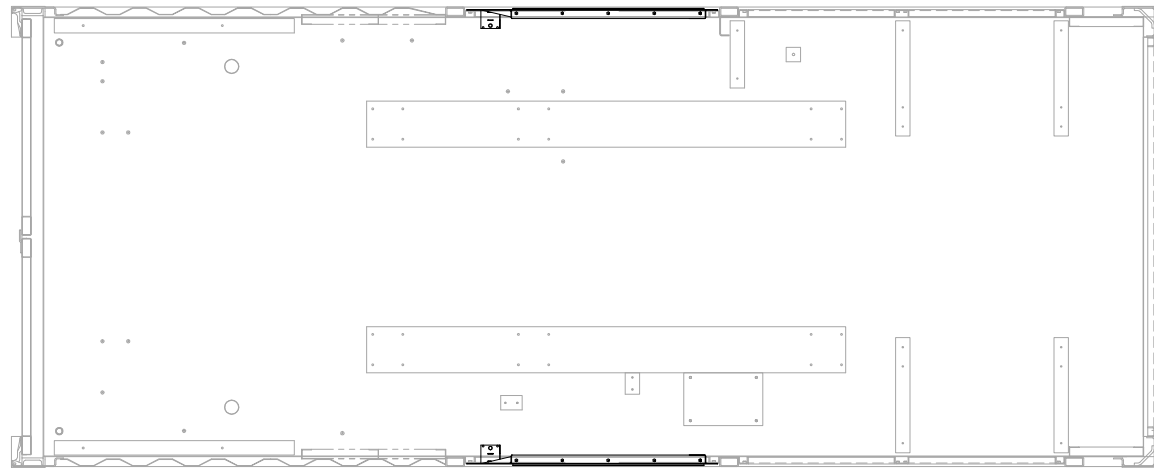
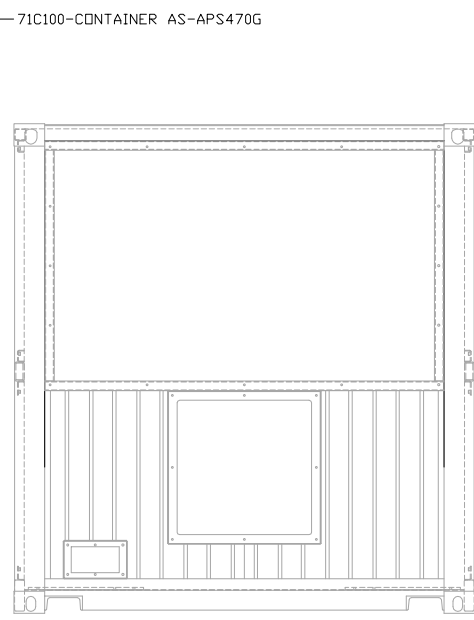


ITEM	QTY.	PART No.	DESCRIPTION
1	1	88C211	DOOR GROUP-PERSONNEL CURB SIDE
2	1	71C160	DOOR GROUP-PERSONNEL STREET SIDE
3	64	198-4776	WASHER-HARD
4	64	8T-4908	BOLT-M8x1.25 - 25MM
5	1	0221241	SEALANT-WHITE

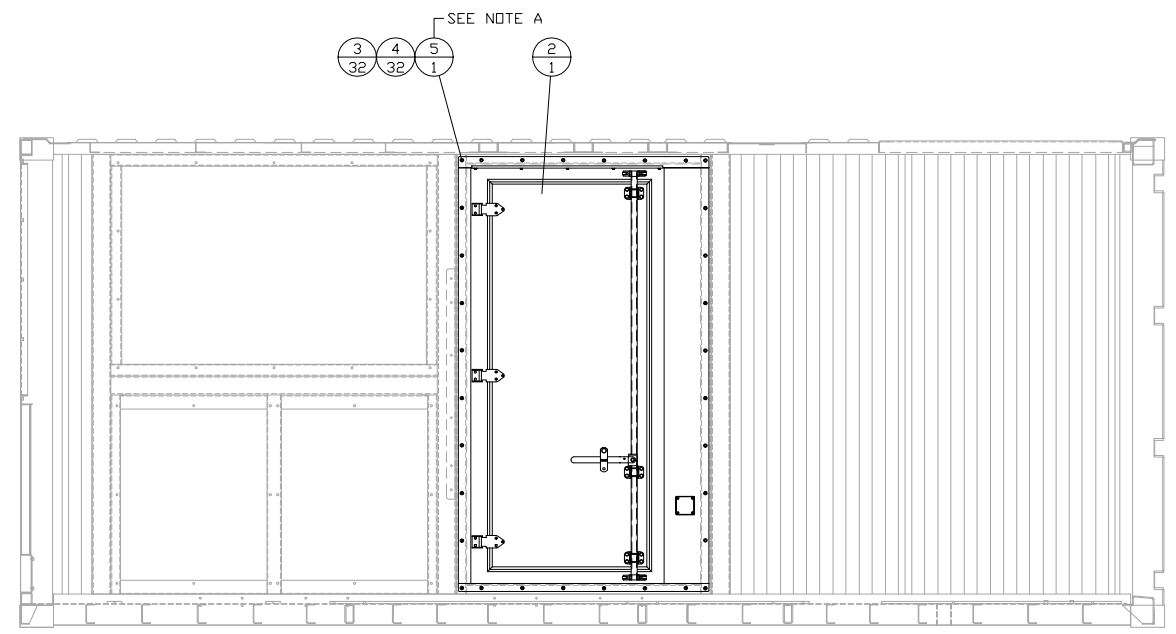


CURB SIDE



CAB END

71C100-CONTAINER AS-APS470G



STREET SIDE

NOTE A: APPLY WHITE SEALANT (0221241) AROUND THE PERIMETER OF LOUVER ASSEMBLIES AFTER INSTALLATION.

01-25-17 REV BY		ALTORFER POWER SYSTEMS 6315 W. FAUBER RD. PHONE (309) 697-1234 BARTONVILLE, IL 61607 FAX (309) 262-7546	
		THIS DOCUMENT CONTAINS PROPRIETARY INFORMATION OF ALTORFER, INC. WITHOUT THE WRITTEN PERMISSION OF ALTORFER, INC., ANY COPYING OR OTHER USE EXCEPT THAT FOR WHICH IT WAS INTENDED IS PROHIBITED.	
PET BUILD UPDATES	CHANGE NOTICE	ALL DIMENSIONS IN INCHES UNLESS OTHERWISE SPECIFIED	FILE
		TOLERANCES: XX ± 0.100 ANGLE X.XX ± 0.060 PROJECTION XXX ± 0.005 ANGULAR ± 1'	PROJECT REFERENCE DF/71A SCALE/SHEET SIZE 1=20/D SHEET 1 OF 1
1	NO	DRAWN BY K NUNN DATE 01-25-17	PROJECT REFERENCE APS470G RENTAL PACKAGE ENGINEERING STATUS PROTO X PET X PRODD 0 DRAWING NUMBER 71A119-1
TITLE		MOUNTING GP-PERSONNEL DOOR	