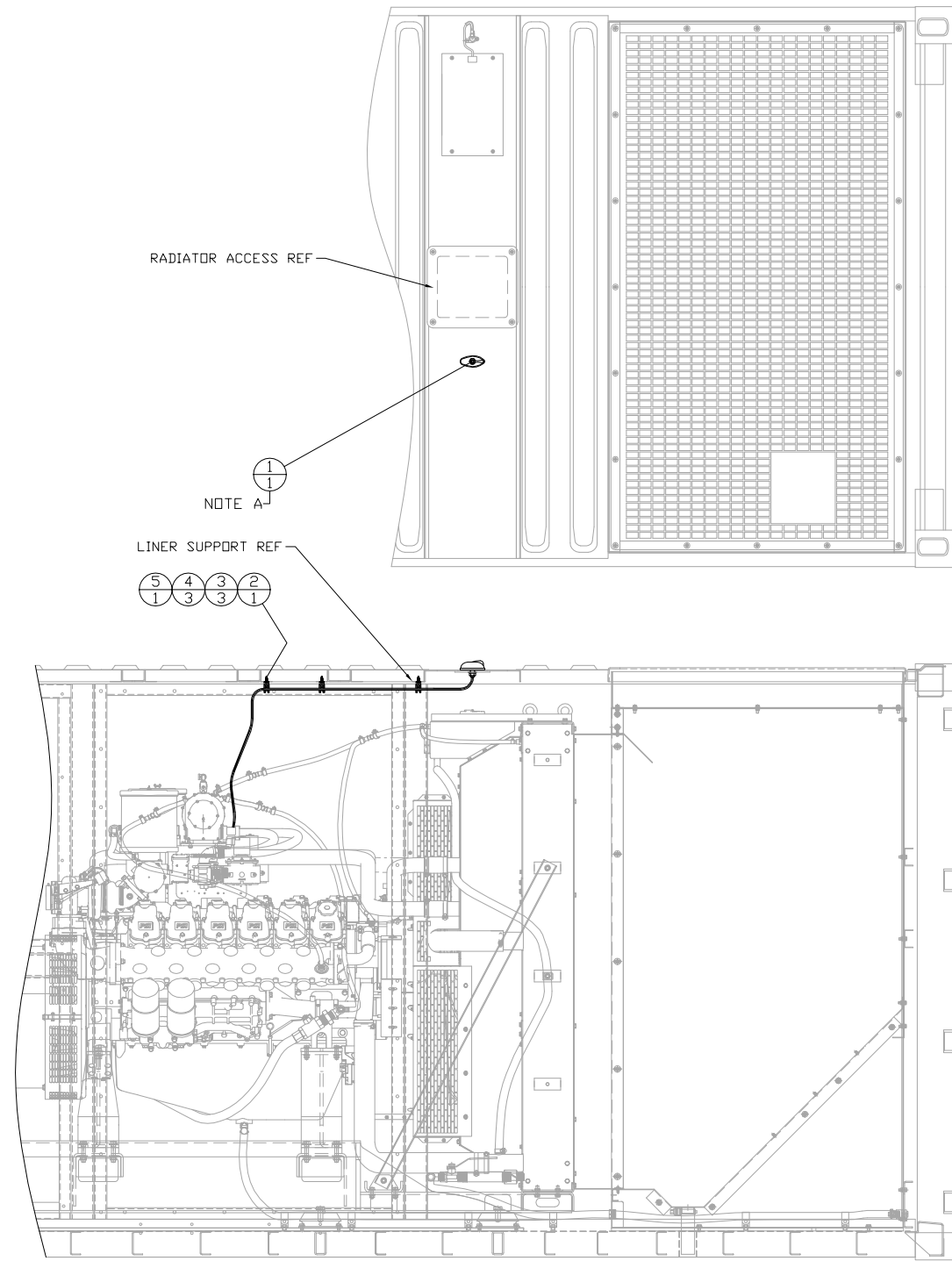


ITEM	QTY.	PART No.	DESCRIPTION
1	1	A10AA1928A	MASTERTRAK ANTENNA (PSI SUPPLIED)
2	1	343-8460	1/4" WIRE LOOM 75' LONG
3	3	156-6175	CLIP-LADDER 90°
4	3	12544519	SCREW-SELF TAPPING 1/4-14 X 1.00"
5	1	SILICONE CAULK	CLEAR SILICONE CAULK



NOTE A: MASTERTRAK ANTENNA A10AA1928A RECEIVED WITH PSI 22L ENGINE

DATE	BY	DESCRIPTION
02-13-17	K NUNN	UPDATE TO NEW ANTENNA

		ALTORFER POWER SYSTEMS 6315 W. FAUBER RD. PHONE (309) 697-1234 BARTONVILLE, IL 61807 FAX (309) 282-7546	
THIS DOCUMENT CONTAINS PROPRIETARY INFORMATION OF ALTORFER, INC. WITHOUT THE WRITTEN PERMISSION OF ALTORFER, INC., ANY COPYING OR OTHER USE EXCEPT THAT FOR WHICH IT WAS INTENDED IS PROHIBITED			
ALL DIMENSIONS IN INCHES UNLESS OTHERWISE SPECIFIED TOLERANCES: .XX ± 0.100 .XXX ± 0.050 .XXXX ± 0.005 ANGULAR ± 1°	FILE DF/71A SCALE/SHEET SIZE 1=20/C SHEET 1 OF 1	PROJECT REFERENCE APS470G RENTAL PACKAGE DRAWN BY K NUNN DATE 02-13-17	ENGINEERING STATUS PROTO PET PROD X X X
TITLE MOUNTING GROUP-MASTERTRAK ANTENNA			DRAWING NUMBER 71A118-1