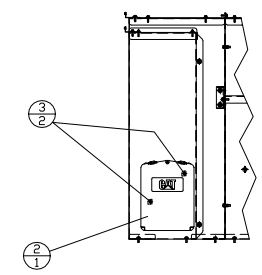
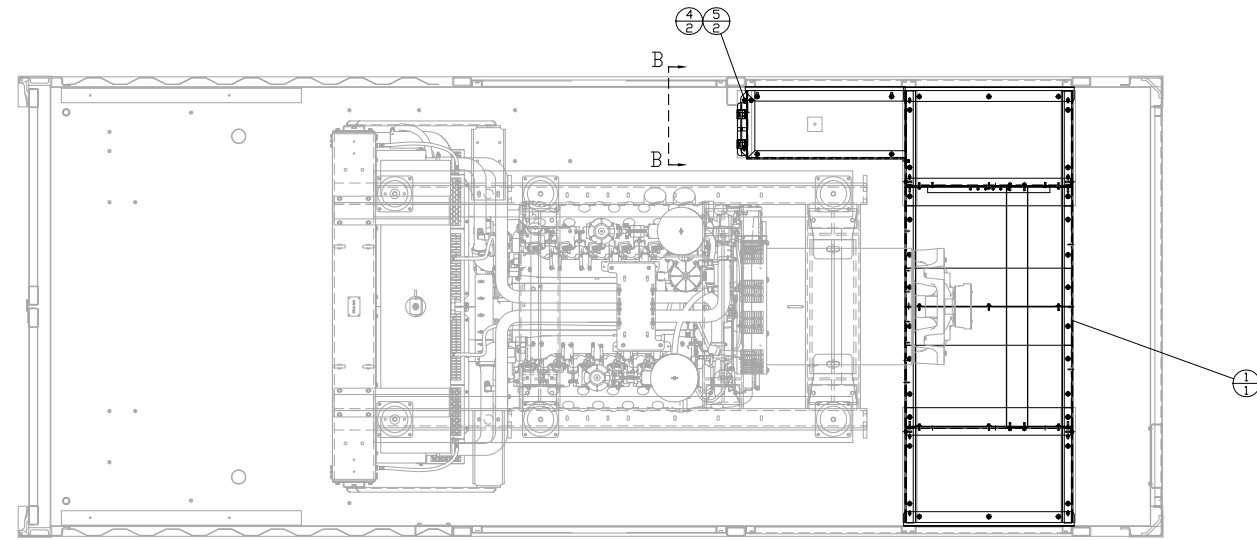
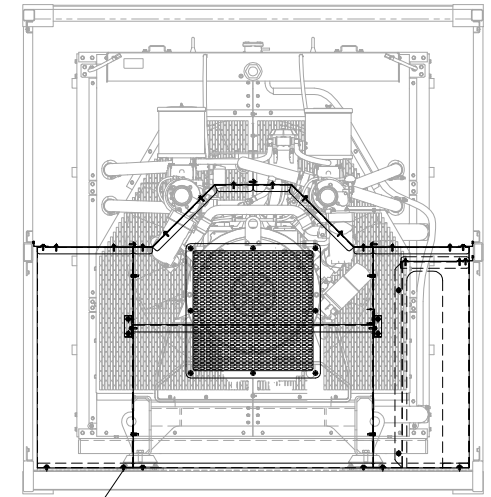
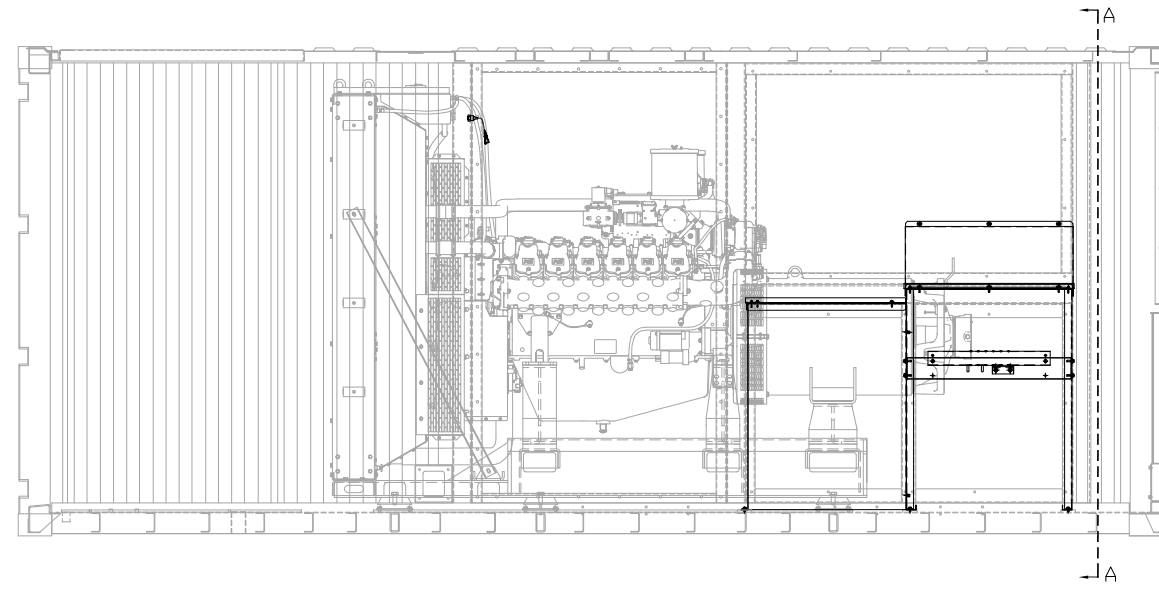


ITEM	QTY.	PART No.	DESCRIPTION	WEIGHT
1	1	71C101	BOX ASSEMBLY-JUNCTION	
2	1	194-4184	BOX-DOCUMENT	
3	2	343-4072	BOLT-FLANGED M6x1.00 - 25 MM	
4	2	8T-4200	BOLT-M8x1.25 - 16 MM	
5	2	5P-4116	WASHER-HARD	
6	12	7X-2548	BOLT-M12x1.75 - 16 MM	
7	12	5P-1076	WASHER-HARD	



VIEW B-B



SECTION A-A

01-19-17 KUN BUN		ALTORFER POWER SYSTEMS 6315 W. FAUBER RD. PHONE (309) 697-1234 BARTONVILLE, IL 61607 FAX (309) 262-7546	
		THIS DOCUMENT CONTAINS PROPRIETARY INFORMATION OF ALTORFER, INC. WITHOUT THE WRITTEN PERMISSION OF ALTORFER, INC., ANY COPYING OR OTHER USE EXCEPT THAT FOR WHICH IT WAS INTENDED IS PROHIBITED.	
PET BUILD CHANGES	ALL DIMENSIONS IN INCHES UNLESS OTHERWISE SPECIFIED TOLERANCES: .XX ± 0.100 .XXX ± 0.060 .XXXX ± 0.005 ANGULAR ± 1°	FILE	PROJECT REFERENCE
		DF/71A	APS470G RENTAL PACKAGE
CHANGE NOTICE	THIRD ANGLE PROJECTION 	SCALE/SHEET SIZE	DRAWN BY
		1=20/D	K NUNN
1	SHEET 1 OF 1	DATE	ENGINEERING STATUS
		01-19-17	PROTO X PET X PRODD 0
1	TITLE	DRAWING NUMBER	
	MOUNTING GROUP-JUNCTION BOX	71A113-1	