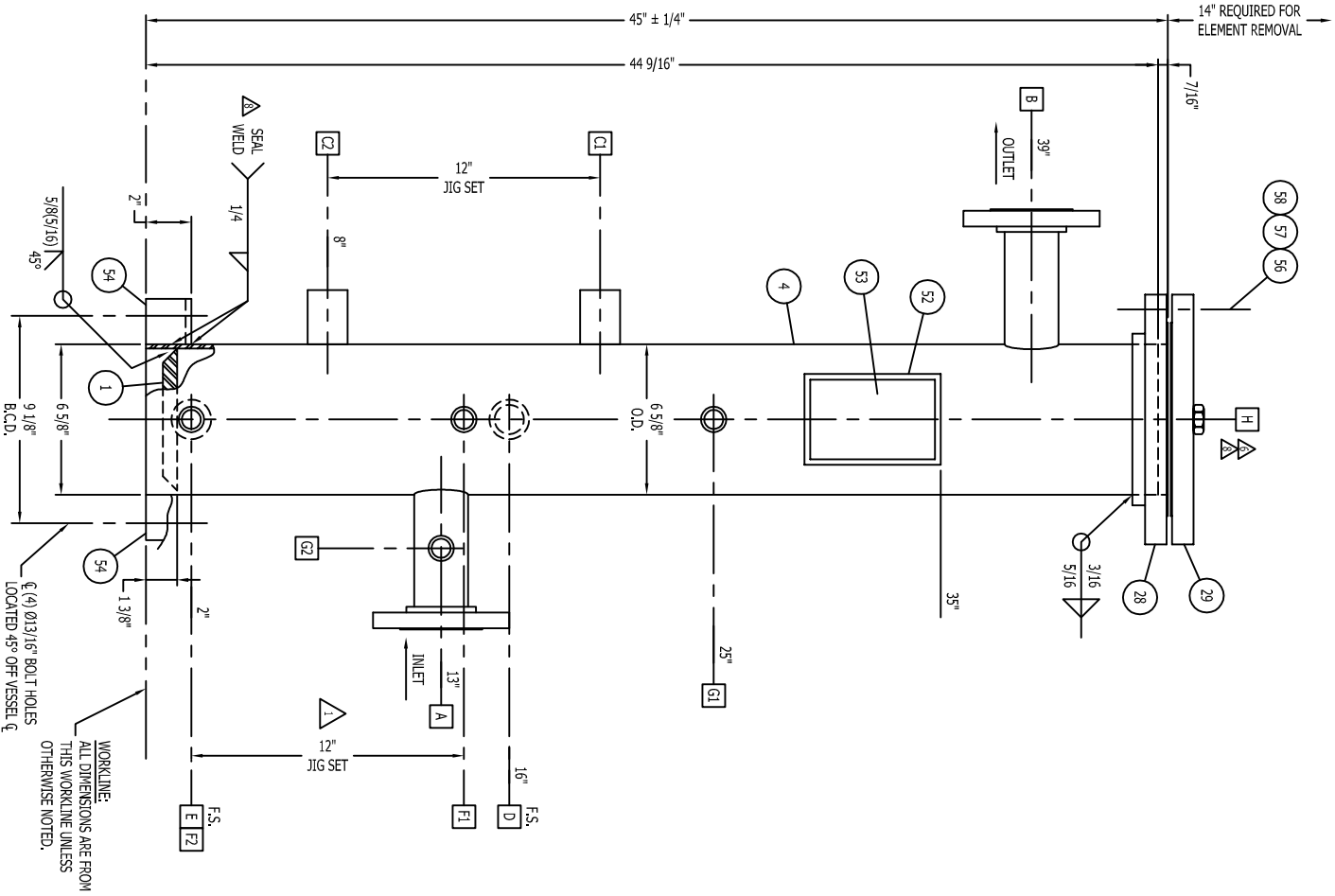


WELD DETAIL

DESCRIPTION	DETAIL
SHELL TO HEAD	SEE ELEV. VIEW
WAVEPLATE BRACKET TO SHELL	HW-200

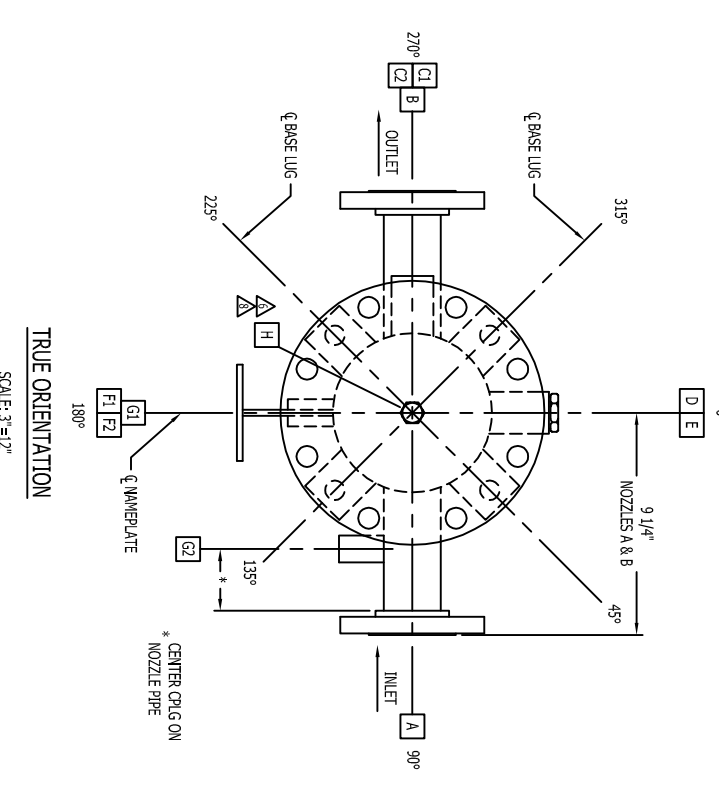


SCHEDULE OF OPENINGS

MARK	NO.	SERVICE	SIZE	RATING	TYPE	BORE	WALL		SCHED.	I.S.	PROJECTION	WELD DETAIL	WELD SIZE			ITEM NO.
							IN	OUT					A	B	C	
A	1	INLET	2"	150#	RF50	2.687"	1/2"	1/2"	40	0.0	CONT.	MW-1	1/4"	1/4"	1/4"	27
B	1	OUTLET	2"	150#	RF50	2.687"	1/2"	1/2"	40	0.0	CONT.	MW-1	1/4"	1/4"	1/4"	26
C-1	1	HEAT EXCH.	1"	3000#	CRG							OW-1	1/4"	1/4"	1/4"	35
C-2	1	EQUALIZER	1"	3000#	CRG							OW-1	1/4"	1/4"	1/4"	36
D	1	DRAIN	1"	3000#	CRG							OW-1	1/4"	1/4"	1/4"	36
E	1	DRAIN	1"	3000#	CRG							OW-1	1/4"	1/4"	1/4"	36
F-1	1	DRAIN	1"	3000#	CRG							OW-1	1/4"	1/4"	1/4"	36
F-2	1	DRAIN	1"	3000#	CRG							OW-1	1/4"	1/4"	1/4"	36
G-1	1	DRAIN	1"	3000#	CRG							OW-1	1/4"	1/4"	1/4"	36
G-2	1	DRAIN	1"	3000#	CRG							OW-1	1/4"	1/4"	1/4"	36
H	1	VENT	1/2"		RF50							OW-1	1/4"	1/4"	1/4"	48

BILL OF MATERIAL

ITEM	QUAN	MULT	U/M	I.C.N.	DESCRIPTION	MATERIAL
1	1	1	EA	02-000729	HEAD BOTTOM PLATE 58" THK X 3 7/8" O.D.	SA-516-70
4	1	3/2	FL	13-00552	PIPE SHELL 6" - 188" WALL THK X 44 9/16" I.D.	SA-53-B
26	1	1	EA	05-00124	NOZZLE ASSY 2-1/2" RF50 SA-50 X 6 1/2" I.D.	SA-105-SA-105-B
27	1	1	EA	05-00282	NOZZLE ASSY 2-1/2" RF50 THK 5/8" X 9 1/2" I.D.	SA-105-SA-105-B
28	1	1	EA	55-00782	FLANGE 6" 300# RF50	SA-105
29	1	1	EA	17315	FLANGE ROUND 6" 150# RF50 W/ 1/2" TP	SA-105
36	4	1	EA	05-015515	CG 6 1" 3000# HMT THRD X 1 1/4" LG.	SA-105
37	4	1	EA	05-01670	CG 6 1/2" 3000# FULL THD 1 7/8" LG.	SA-105
38					DELTD	
46	1	1	EA	12-00291	PLUG HP HD 1"	SA-105
48	1	1	EA	12-00289	PLUG HP HD 1/2"	SA-105
52	1	1	EA	02-00075	WAVEPLATE BRACKET T-7	A-36
53	1	1	EA	05-00783	WAVEPLATE CODE	A-36
54	4	1	EA	02-00556	LUG BASE #2	SA-36
56	8	1	EA	55-00914	STUD 3/4" X 4 1/4" LG. ZINC COATED	SA-193-B
57	16	1	EA	12-00283	NUT 7/16" HEX 3/4" (ZINC COATED)	SA-193-B
58	1	1	EA	12-02705	WASHER 7/16" X 3/4" (ZINC COATED)	SA-193-B
501	2	1	EA	12-02394	PROTECTOR FLANGE 2-1/2"	POLY
801	1	1	GAL	05-03953	PAINT CARBOCOURT 150 GRAY	ALKO
802	1	1	GAL	05-03968	THINNER CARBOLINE #10	



ALL DIMENSIONS ARE ± 1/8" (3 MM) UNLESS OTHERWISE NOTED.

ELEVATION
SCALE: 3"=12"

WORKLINE: ALL DIMENSIONS ARE FROM THIS WORKLINE UNLESS OTHERWISE NOTED.
Q (4) Ø13/16" BOLT HOLES LOCATED 45° OFF VESSEL Q.

REV	ECO	DATE	BY	QCD	ENGR	DESCRIPTION
0	--	7-29-02	CJM	QC	BS	FIRST ISSUE (DWR# 25786)
1	R11201	10-25-02	WRW	QC	BS	REL. DIM. (DWR# 26131)
2	R11206	10-31-02	WRW	QC	BS	ADDED TEXT "RES" TO NAME PLATE (DWR# 26142)
3	R13456	5-03-06	JS	DAC	TAE	REVISED BOM (DWR# 30365)
4	--	5-4-08	WRG	BL	TAE	REVISED NAME PLATE, VESSEL MODEL (DWR# 33514)
5	--	06/24/10	DB	DAC	TAE	REV. AS NOTED (DWR# 35487)
6	--	12-09-10	MMS	DAC	TAE	REVISE DWG. PER MARK-UP (DWR# 35883)
7	--	02-09-11	MMS	SWD	RJG	REVISE DWG. TO ADD TEXT. REVISE TO 275 PSIG (DWR# 38021)
8	--	09/28/12	VZW	--	--	REV. TO REMOVE THEOULET CHANGE ITEM NO 29. TO 17315 (DWR# 37223)

ESTIMATED WEIGHTS	LBS.	KG
EMPTY	110	.
FULL OF WATER	170	.

OPERATING QTY. REQD.: *

PROJECT NO.: *

CUSTOMER: *

P.O. NO.: *

Facet MINERAL WELLS, TEXAS
WWW.PECONFACET.COM

MODEL: 89-1-312-6-275-2
SERIES 89
VERTICAL FILTER SEPARATOR

DATE: 7-29-02 DATE: 12/29/06 REV.: 8

CERTIFIED BY: [Signature]
W RES: [Signature]
MINERAL WELLS, TEXAS, U.S.A.

MAWP: 275 PSIG AT 100 OF
MDMT: -20 OF AT 275 PSIG
MAEWP: -- PSI AT -- OF
SER. NO. []
CA. 0.0625 INCH YR. BLT []
MODEL: 89-1-312-6-275-2
CLOSURE GASKET NO. []
P.O. NO. []

Facet
For Service Call: 1-800-877-2736
Website: www.peconfacet.com
TAG NO.: *

* SEE SALES ORDER

IF REQUIRED BY SALES ORDER, STAMP WAVEPLATE WITH GRN FOR PROVINCE:
ALBERTA:
SASKATCHEWAN:
BRITISH COLUMBIA:
ONTARIO:
CN IS ONLY VALID TO 275 PSIG FROM -20 TO 100F WITH 1 1/16" CA.