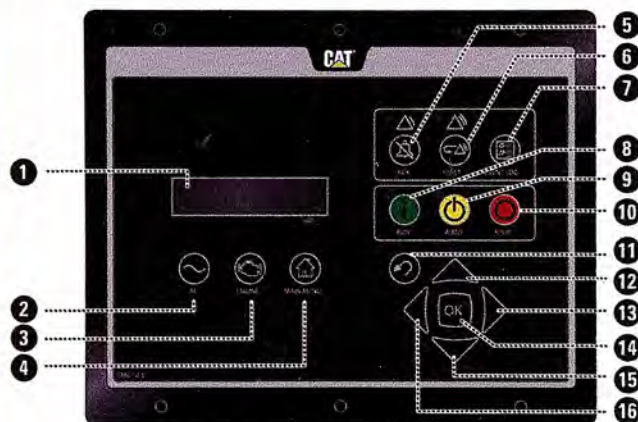


EMCP 4.1 / 4.2

Quick Start Guide



Function	Button Sequence
Start	Press RUN 8
Cool Down/Stop	Press STOP 10 once to initiate cool down cycle. Once cool down cycle is complete, engine will stop. (Press/Hold STOP 10 5 sec. to bypass cool down cycle.) Confirm on Display Screen 1 by Pressing OK 14
Place in Auto Mode	Press AUTO 9
View Warning/ Shutdown Events	Select "Event Log" by pressing EVENT LOG KEY 7 Individual event logs are shown below "Active Events [total number]." Select event logs with number greater than zero and search for active or present events using UP 12 / DOWN 15 keys
Reset All Active Shutdown Events	Place in STOP mode (Press STOP 10) Press/Hold EVENT RESET 6 for 5 seconds Display Screen 1 will ask "RESET ALL EVENTS?" Press OK 14 to reset the events

- 1 Display Screen**
Displays information about the generator set.
- 2 AC Overview Key**
Press this key to view information about the generator set output. Use DOWN **15** key to view additional AC parameters.
- 3 Engine Overview Key**
Press this key to view information about the engine. Use the DOWN **15** key to view additional engine parameters.
- 4 Main Menu/Home Key**
Use this to access all the menus.
- 5 Alarm Acknowledge/Silence Key with Yellow Warning Lamp**
Use this key to silence horn. (The fault for the horn needs to be viewed after the horn is silenced).
- 6 Event Reset Key with Red Shutdown Lamp**
Use this key to clear the fault after the condition is corrected. (The fault for the horn needs to be viewed after the horn is silenced).
- 7 Event Log Key**
Use this key to view the history log for events.
- 8 RUN Key**
Press this key to start and run the generator set.
- 9 AUTO Key**
Press this key to set the generator up to be started automatically via switch.
- 10 STOP Key**
- 11 Press this key to cause the generator set to cool down and then stop.**
- ESCAPE Key**
Press this key to move out a level in the menu on the display.
- 12 (UP), 13 (RIGHT), 15 (DOWN), 16 (LEFT) Display Navigation**
- 14 Press these keys to navigate through the menus on the display.**
- OK Key** Press this key to select highlighted options on the display.

For more detailed information, consult the Operation and Maintenance Manual for your Generator Set.

24/7 Emergency Service:

ILLINOIS
309-427-1234

IOWA
319-398-9127

MISSOURI
573-221-8600

ALTORFER
Power Systems

